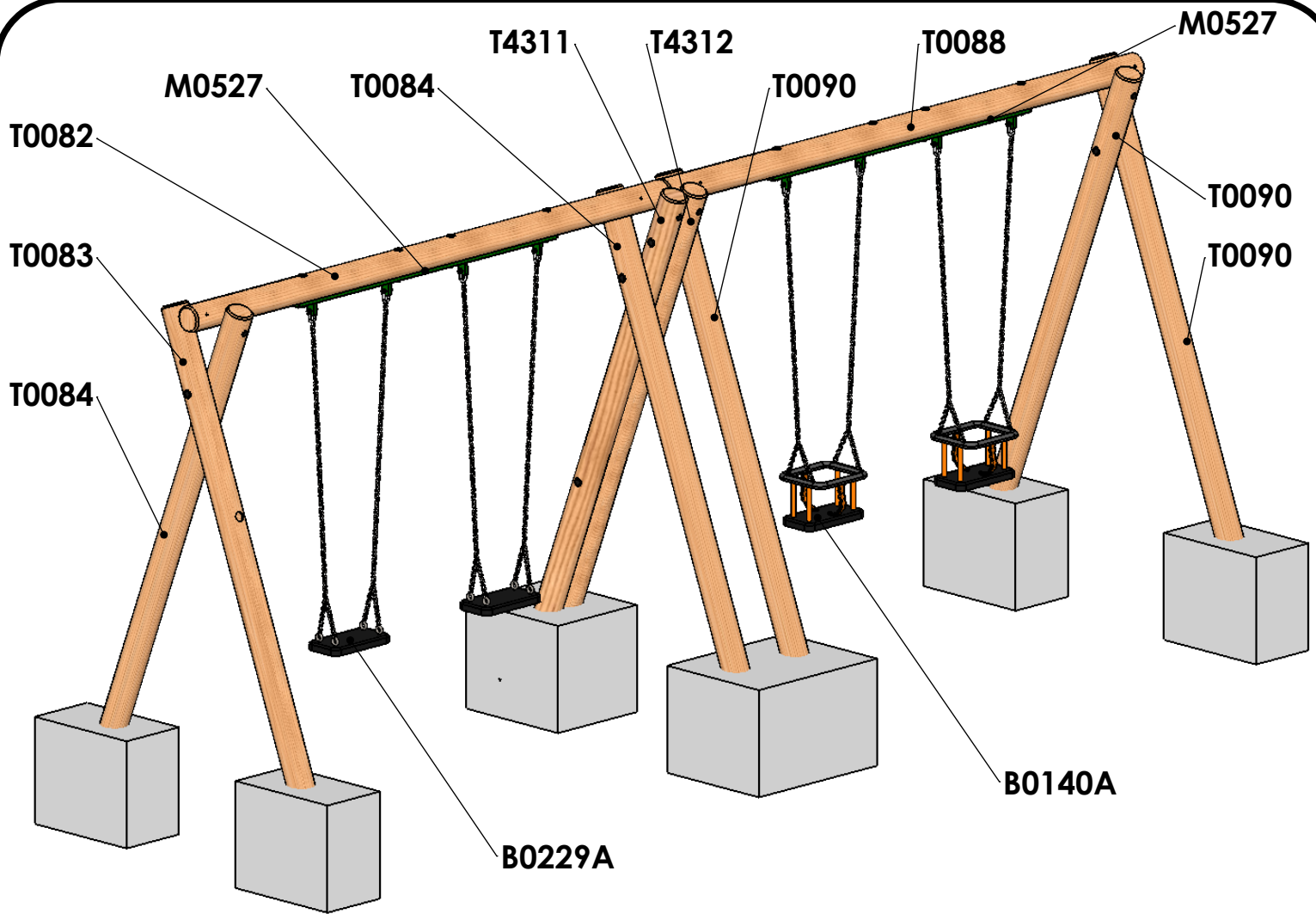


Timber Swing 2.4m - 2 Flat, 2 Cradle

General Information - Page 1 of 5

Revision - 0
Saved Date 12 May 2016 10:49:33



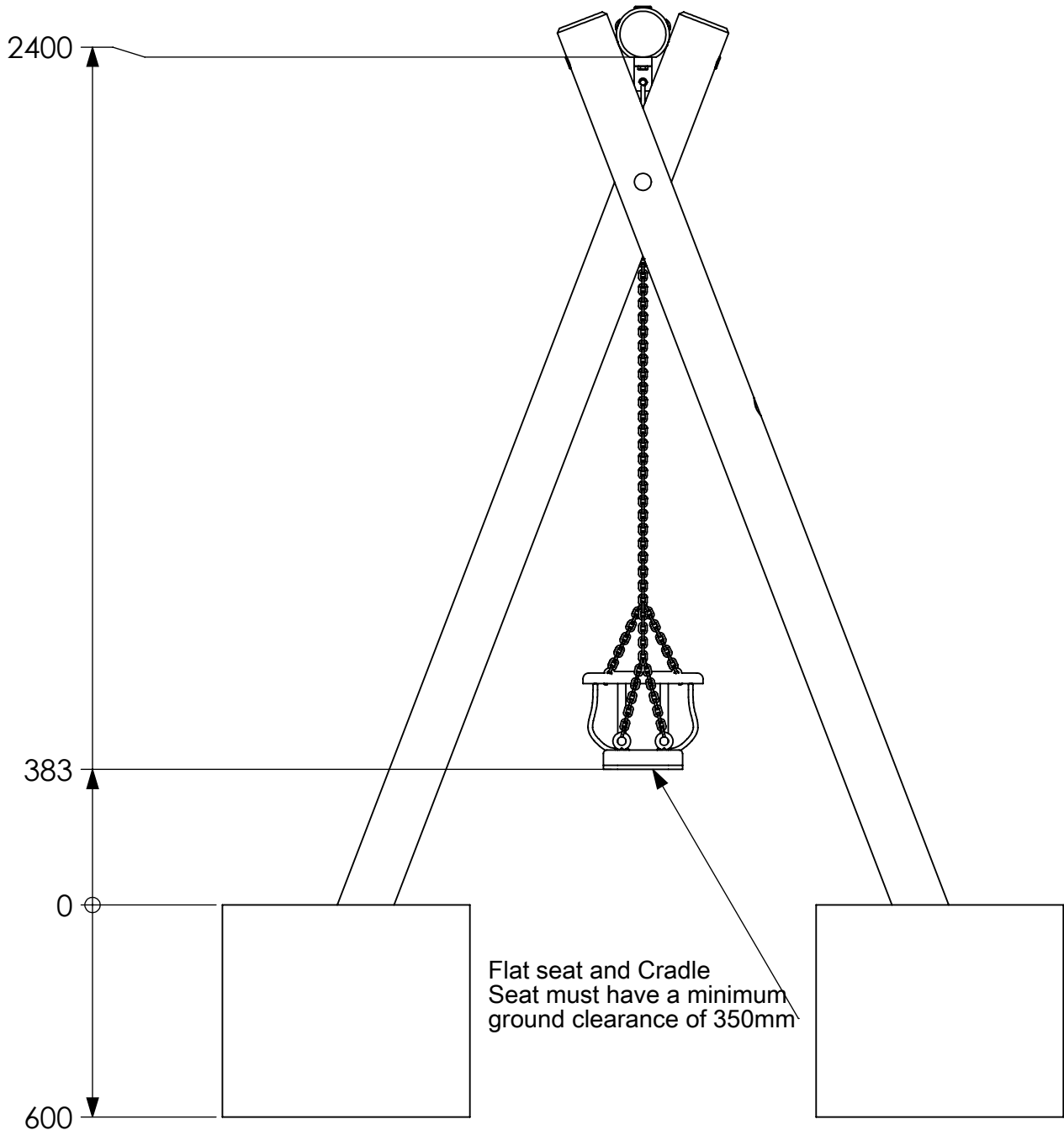
ITEM NO.	PART NUMBER	DESCRIPTION	QTY.
1	T0082	Timber 150mm dia. cut at 3610mm DC	1
2	T0083	Timber 150mm dia. cut at 3295mm SC	1
3	T0084	Timber 150mm dia. cut at 3295mm SC	2
4	T0088	Timber 150mm dia. cut at 3610mm DC	1
5	T0090	Timber 150mm dia. cut at 3295mm SC	3
6	T4311	Timber 150mm dia. cut at 3295mm SC	1
7	T4312	Timber 150mm dia. cut at 3295mm SC	1
8	B0140A	2.4m Cradle Seat with 1540mm Long Chains	2
9	B0229	2.4m Flat Seat with 1830mm Long Chains	2
10	M0527	Steel Box for 2 Seats	2



Statement of Compliance: AE Evans Ltd. manufacturers of children's playground equipment follow the codes and practices outlined in the British and European Standards. By doing this, all equipment for play areas manufactured by AE Evans meets the requirements of BSEN 1176 (general safety and test methods). Spares can be supplied via equipment distributor.

Timber Swing 2.4m - 2 Seat Flat 2 Cradles

Dig all groundworks 600mm deep



Timber Swing 2.4m - 2 Seat Flat 2 Cradles

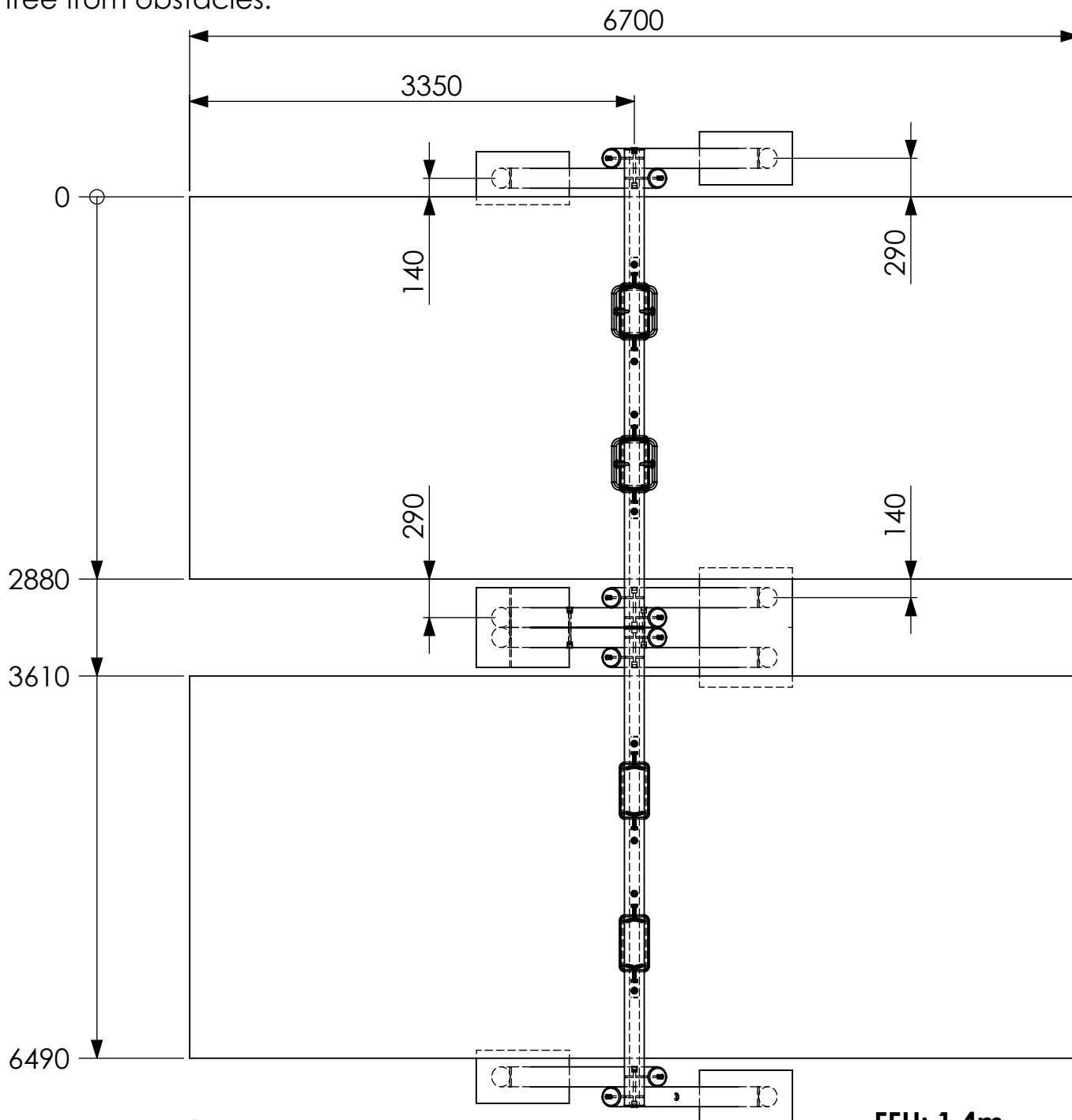
Surfacing Detail - Page 4 of 5

Revision - 0
Saved Date 12 May 2016 10:49:33

Important Note

Safety surface area dimensions below are for wet pour surfacing (synthetic). If loose fill is being used the length needs to be increased to 7.7m (from 6.7m) to allow an extra 500mm of surfacing at either end.

Additionally for a wet pour impact area that is level with the surrounding surface, there must be an additional area with a length of 500mm in the direction of the swing free from obstacles.



FFH: 1.4m
Area: 38.6m²

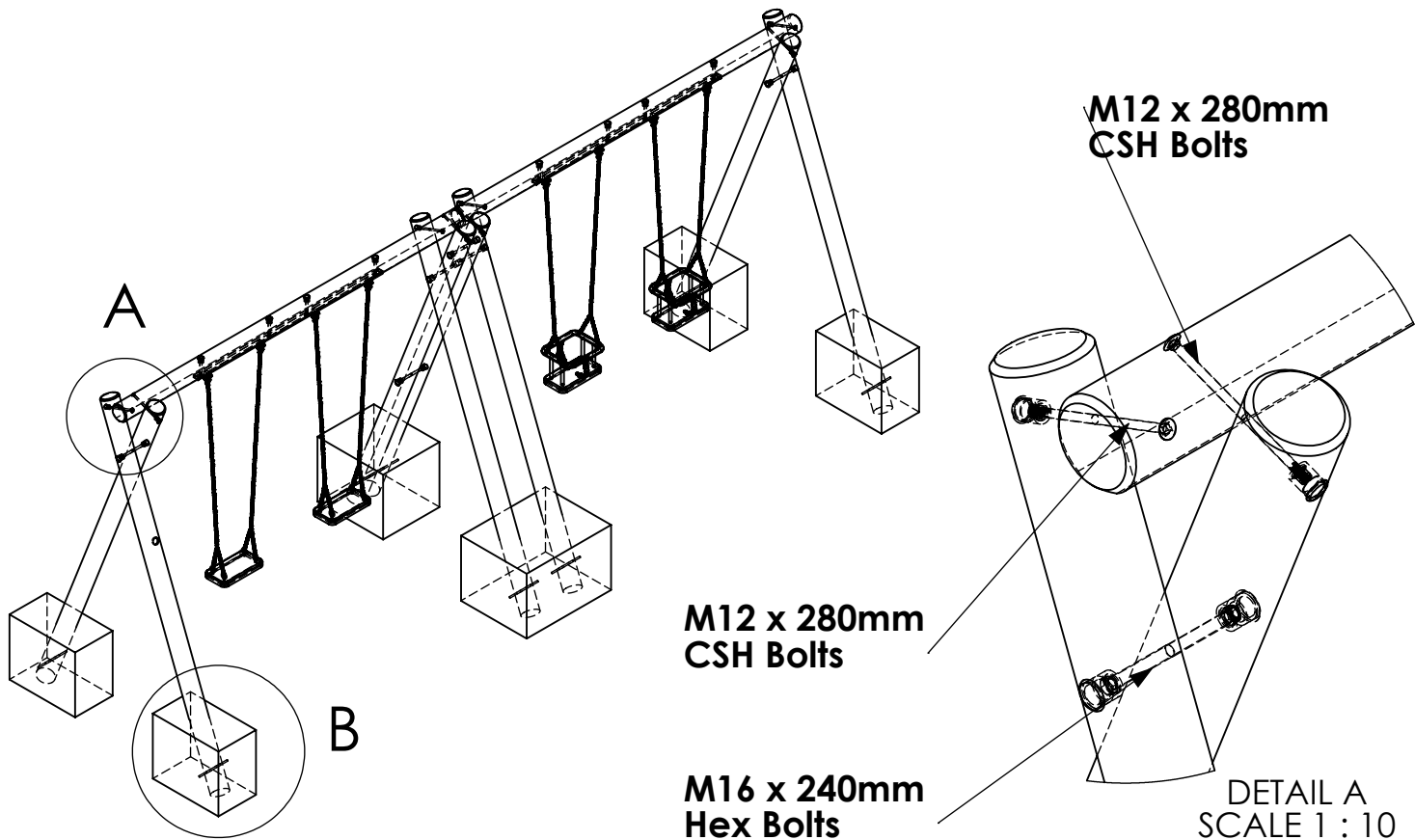


Statement of Compliance: AE Evans Ltd. manufacturers of children's playground equipment follow the codes and practices outlined in the British and European Standards. By doing this, all equipment for play areas manufactured by AE Evans meets the requirements of BSEN 1176 (general safety and test methods). Spares can be supplied via equipment distributor.

Timber Swing 2.4m - 2 Seat Flat 2 Cradles

Bolt List - Page 5 of 5

Revision - 0
Saved Date 12 May 2016 10:49:33



Bolt List

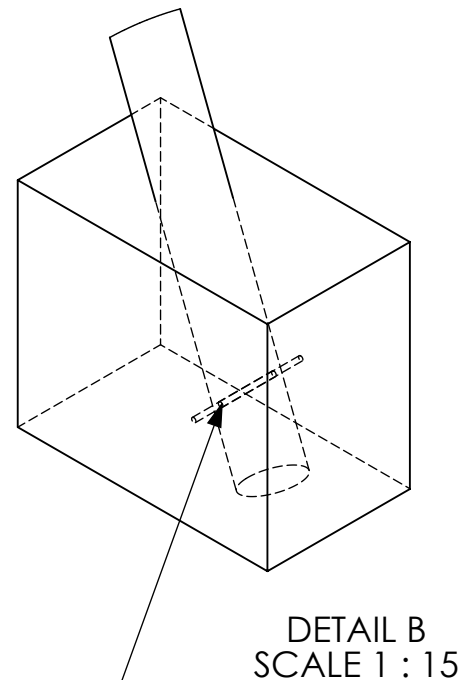
06 No M16 x 240mm Hex Bolts
06 No M16 Nylock Nuts
12 No M16 Washers
08 No M12 x 280mm CSH Bolts
08 No M12 Nylock Nuts
08 No M12 Washers
08 No 12mm dia x 300mm Solid Round Bar

12 No 40mm Black Inserts
08 No 33mm Black Inserts

Seats

02 No Flat Seats with 1830mm Long Chains
02 No Cradle Seats with 1540mm Long Chains

M0577 comes pre-attached to T0082 and T0088



Insert 12mm dia x 300mm solid bar through each leg before concreting.



Statement of Compliance: AE Evans Ltd. manufacturers of children's playground equipment follow the codes and practices outlined in the British and European Standards. By doing this, all equipment for play areas manufactured by AE Evans meets the requirements of BSEN 1176 (general safety and test methods). Spares can be supplied via equipment distributor.