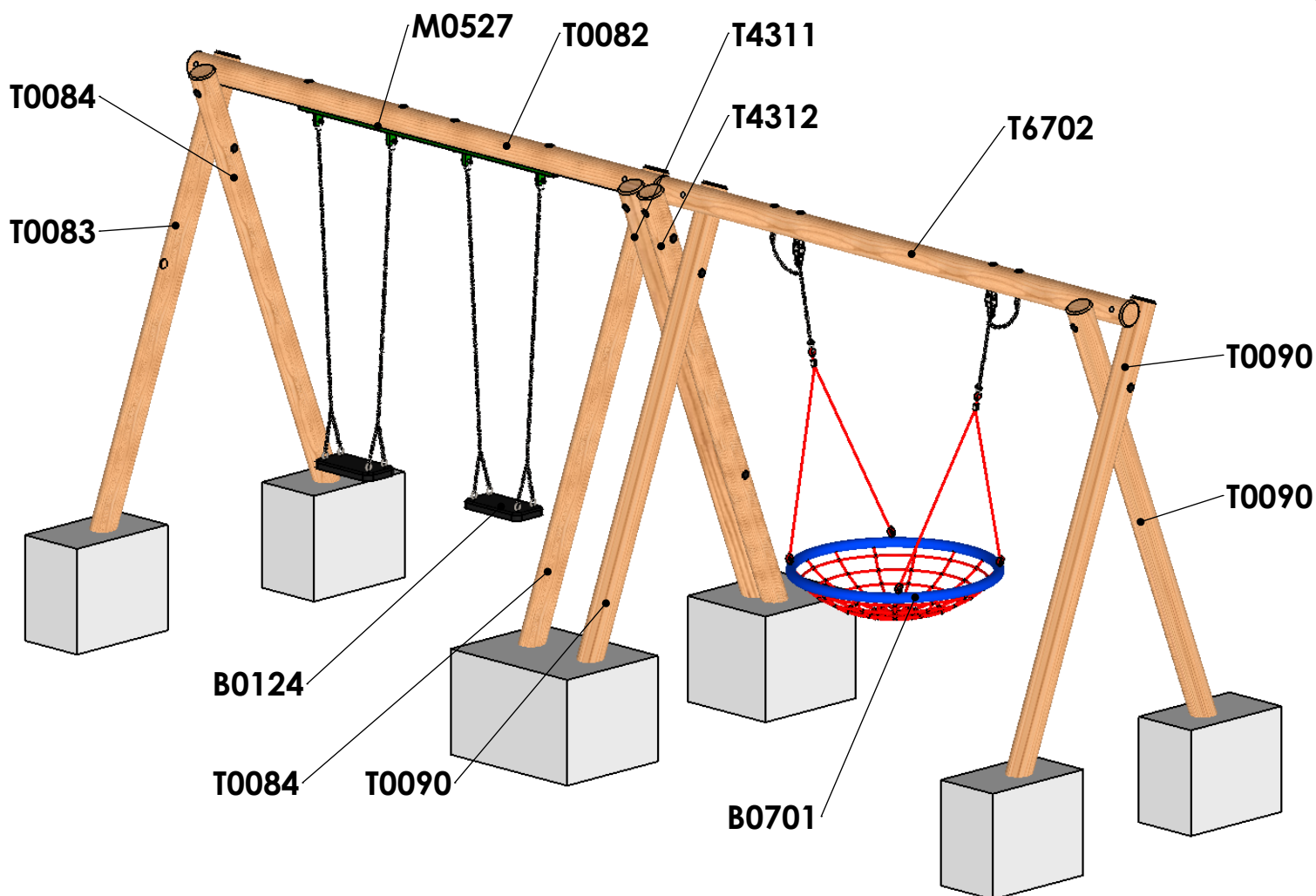


Timber Swing 2.4m - 2 Flat and 1 Group Swing

General Information - Page 1 of 5

Revision - 0
Saved Date 12 August 2019 11:50:52



ITEM NO.	PART NUMBER	DESCRIPTION	QTY.
1	T0082	Timber 150mm dia. cut at 3610mm DC	1
2	T0083	Timber 150mm dia, cut at 3295mm SC	1
3	T0084	Timber 150mm dia, cut at 3295mm SC	2
4	T0090	Timber 150mm dia. cut at 3295mm SC	3
5	T4311	Timber 150mm dia. cut at 3295mm SC	1
6	T4312	Timber 150mm dia. cut at 3295mm SC	1
7	T6702	Timber 150mm dia. cut at 3610mm DC	1
8	B0229	2.4m Flat Seat with 1830mm Long Chains	2
9	B0701	1000mm Group Seat Complete Assembly KBT	1
10	M0527	Steel Box for 2 Seats	1



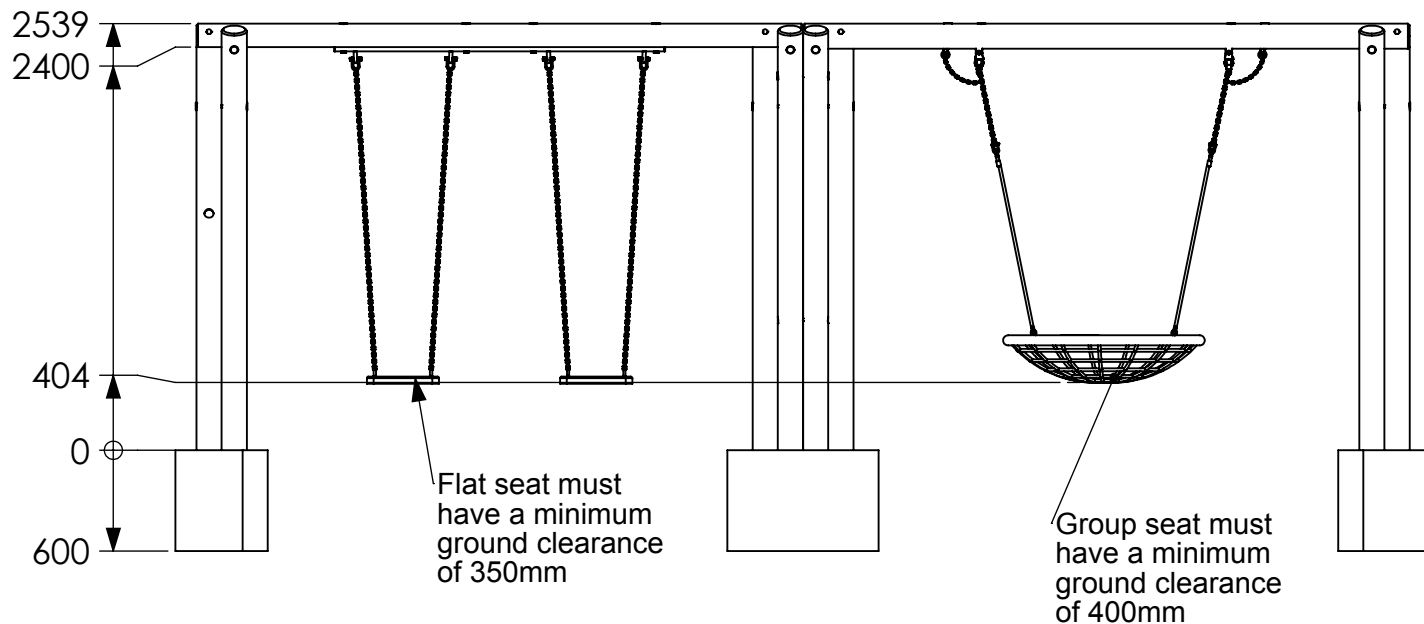
a e evans

Statement of Compliance: AE Evans Ltd. manufacturers of children's playground equipment follow the codes and practices outlined in the British and European Standards. By doing this, all equipment for play areas manufactured by AE Evans meets the requirements of BSEN 1176 (general safety and test methods). Spares can be supplied via equipment distributor

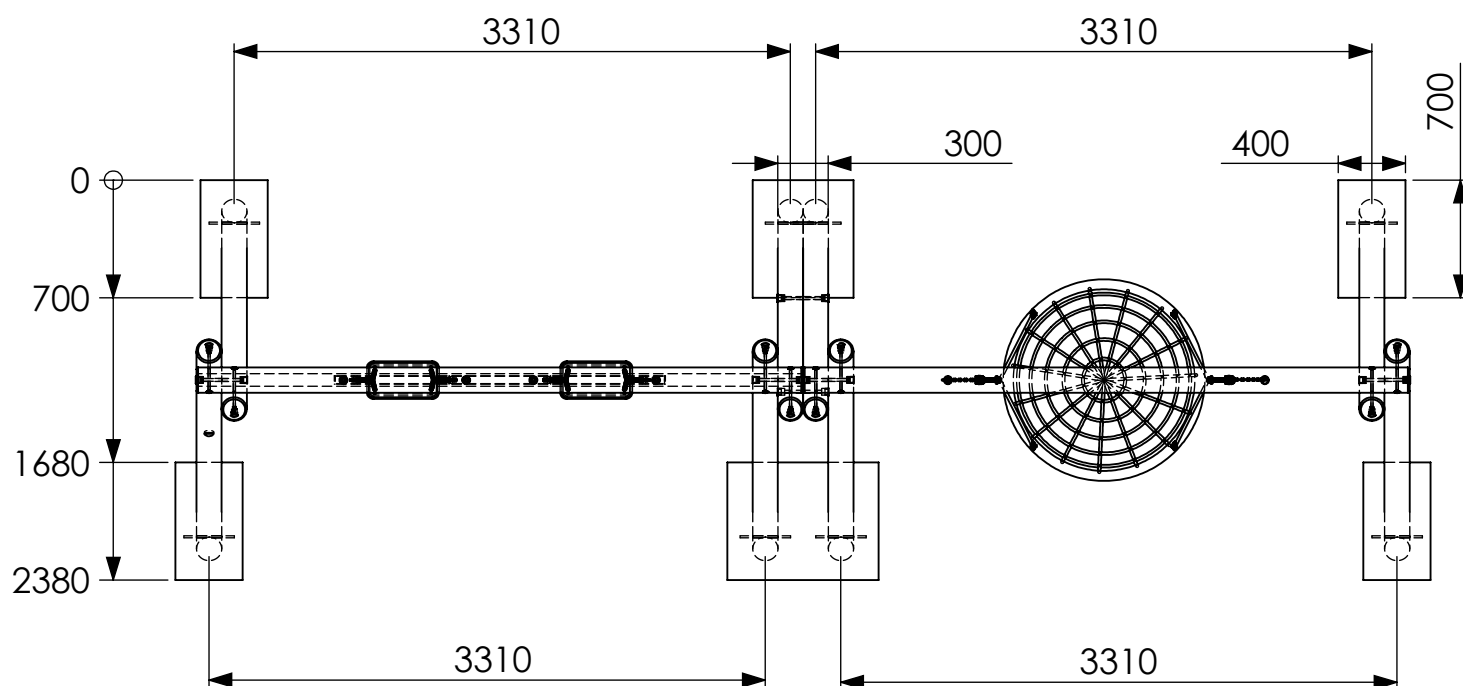
Timber Swing 2.4m - 2 Flat and 1 Group Swing

Excavation Detail - Page 2 of 5

Revision - 0
Saved Date 12 August 2019 11:50:52



Dig groundworks 600mm deep.



a e evans

Statement of Compliance: AE Evans Ltd. manufacturers of children's playground equipment follow the codes and practices outlined in the British and European Standards. By doing this, all equipment for play areas manufactured by AE Evans meets the requirements of BSEN 1176 (general safety and test methods). Spares can be supplied via equipment distributor

Timber Swing 2.4m - 2 Flat and 1 Group Swing

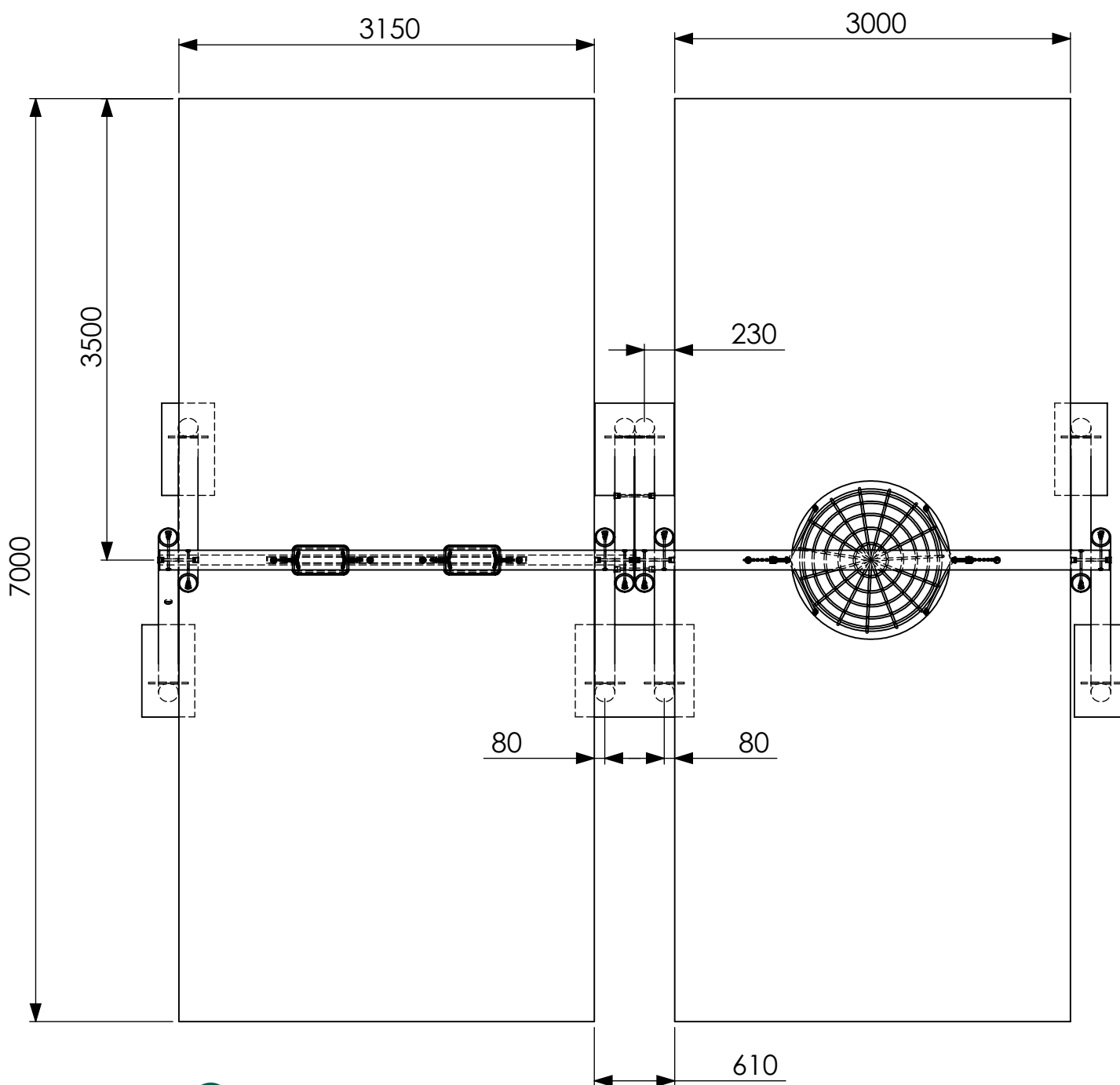
Surfacing Detail - Page 3 of 5

Revision - 0
Saved Date 12 August 2019 11:50:52

Important Note

Safety surface area dimensions below are for wet pour surfacing (synthetic).
If loose fill is being used the length needs to be increased to 8.0m (from 7.0m)
to allow an extra 500mm of surfacing at either end.

Additionally for a wet pour impact area that is level with the surrounding surface,
there must be an additional area with a length of 500mm in the direction of the swing
free from obstacles.



FFH = 1.4m
Area = 42m²

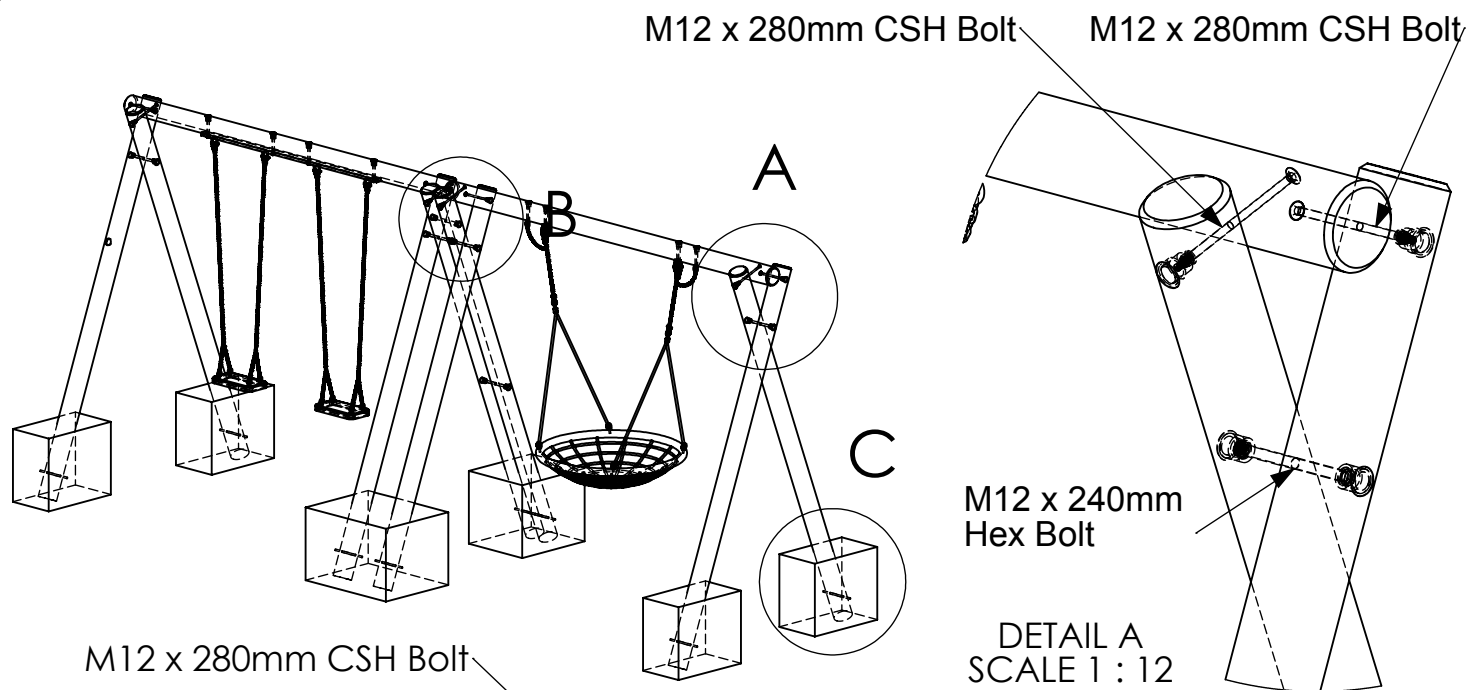


Statement of Compliance: AE Evans Ltd. manufacturers of children's playground equipment follow the codes and practices outlined in the British and European Standards. By doing this, all equipment for play areas manufactured by AE Evans meets the requirements of BSEN 1176 (general safety and test methods). Spares can be supplied via equipment distributor

Timber Swing 2.4m - 2 Flat and 1 Group Swing

Construction Detail - Page 4 of 5

Revision - 0
Saved Date 12 August 2019 11:50:52



M12 x 280mm CSH Bolt

M12 x 280mm CSH Bolt

DETAIL B
SCALE 1 : 12

M12 x 240mm Hex Bolt

M12 x 280mm CSH Bolt

M12 x 280mm CSH Bolt

M12 x 240mm Hex Bolt

Bolt List

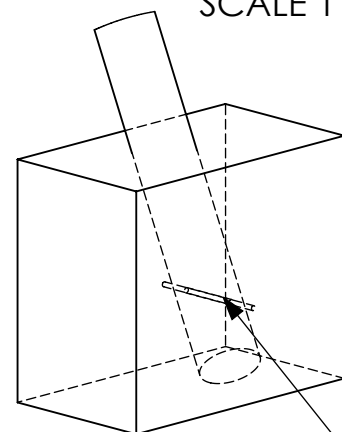
- 06 No M16 x 240mm Hex Bolts
- 06 No M16 Nylock Nuts
- 12 No M16 Washers
- 08 No M12 x 280mm CSH Bolts
- 08 No M12 Nylock Nuts
- 08 No M12 Washers
- 08 No 12mm x 300mm Solid Round Bar

- 02 No 6mm D-Shackles
- 12 No 40mm Black Inserts
- 08 No 33mm Black Inserts

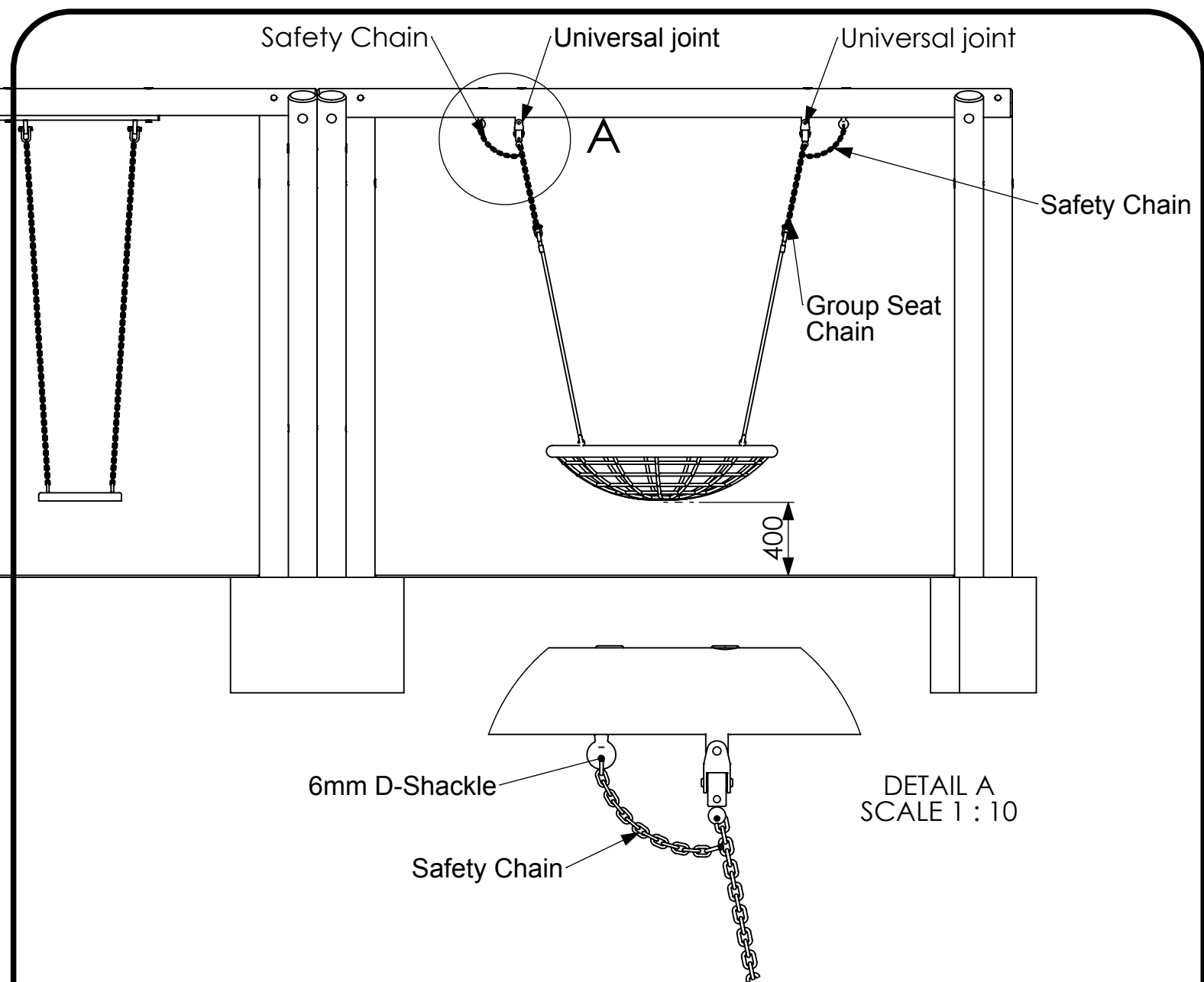
Seats

- 02 No Flat Seats with 1830mm Long chains
- 01 No 1000mm Dia Red/Blue Group Swing Seat with chains

DETAIL C
SCALE 1 : 18



Insert 12mm dia x 300mm solid bar through each leg before concreting.



Hanging of the Group Seat

1. Attach the chains on the group seat to the universal joints.
2. Measure the distance from the bottom of the group seat to the floor. There must be a **MINIMUM** gap of 400mm as shown above.
3. Raise the seat if needed and remove the unused chain links.
4. Once the seat is fixed correctly the safety chains can be added. The safety chains should be fitted to the group seat chains using the 6mm D-Shackles supplied. The safety chains should **NOT** be taking any weight of the group seat. The safety chains are design to stop the group seat hitting the floor should the universal joint fail.

