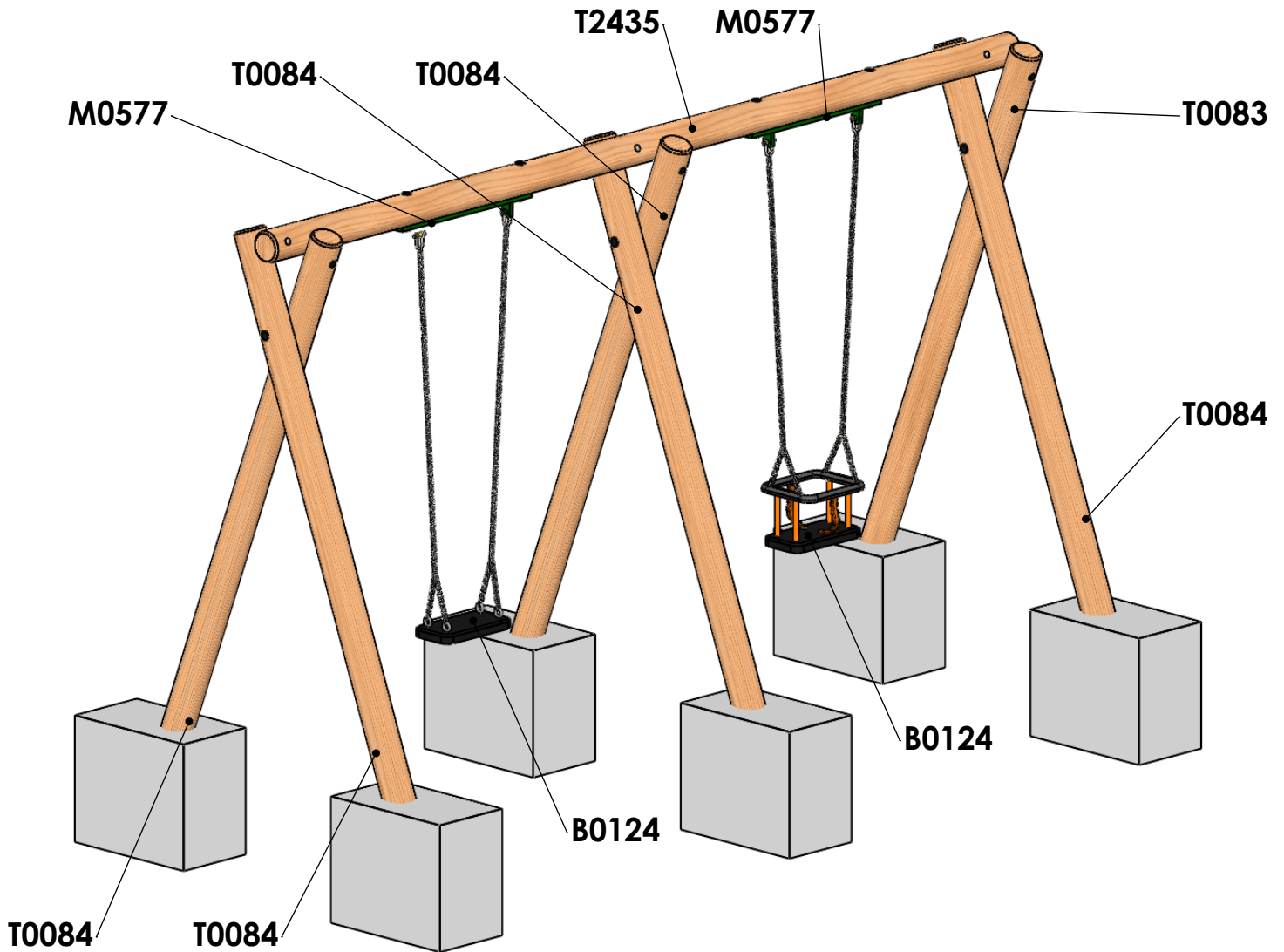


Timber Swing 2.4m - 1 Flat and 1 Cradle

General Information - Page 1 of 5

Revision - 0
Saved Date 08 June 2016 09:18:50



ITEM NO.	PART NUMBER	DESCRIPTION	QTY.
1	T0083	Timber 150mm dia. cut at 3295mm SC	1
2	T0084	Timber 150mm dia. cut at 3295mm SC	5
3	T2435	Timber 150mm dia. cut at 4800mm DC	1
4	M0577	Steel Box for 1 Seat	2
5	B0140	2.4m Cradle Seat with 1540mm Chains	1
6	B0229	2.4m Flat Seat with 1830mm long Chains	1

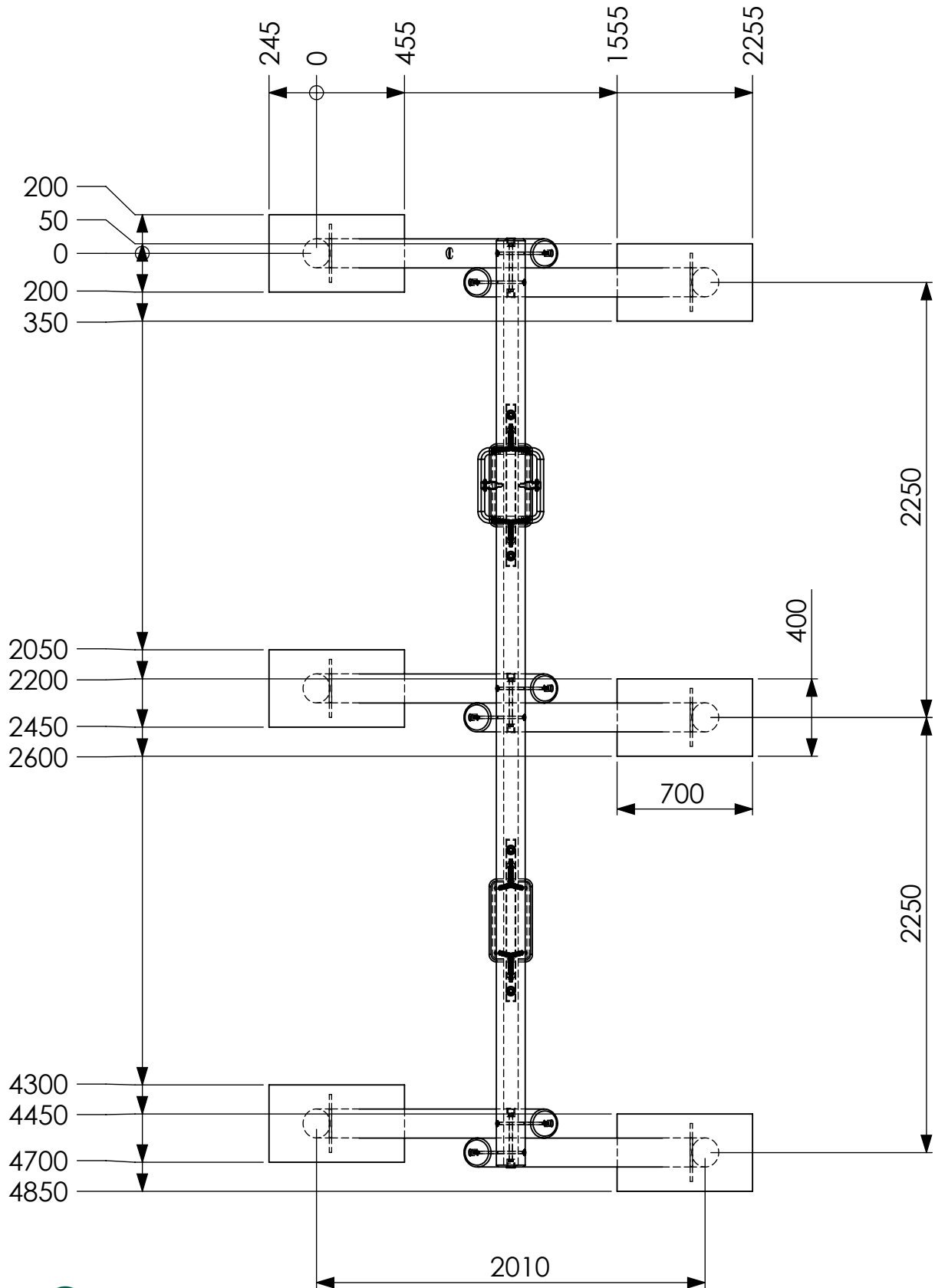


Statement of Compliance: AE Evans Ltd. manufacturers of children's playground equipment follow the codes and practices outlined in the British and European Standards. By doing this, all equipment for play areas manufactured by AE Evans meets the requirements of BSEN 1176 (general safety and test methods). Spares can be supplied via equipment distributor.

Timber Swing 2.4m - 1 Flat and 1 Cradle

Excavation Detail - Page 2 of 5

Revision - 0
Saved Date 08 June 2016 09:18:50

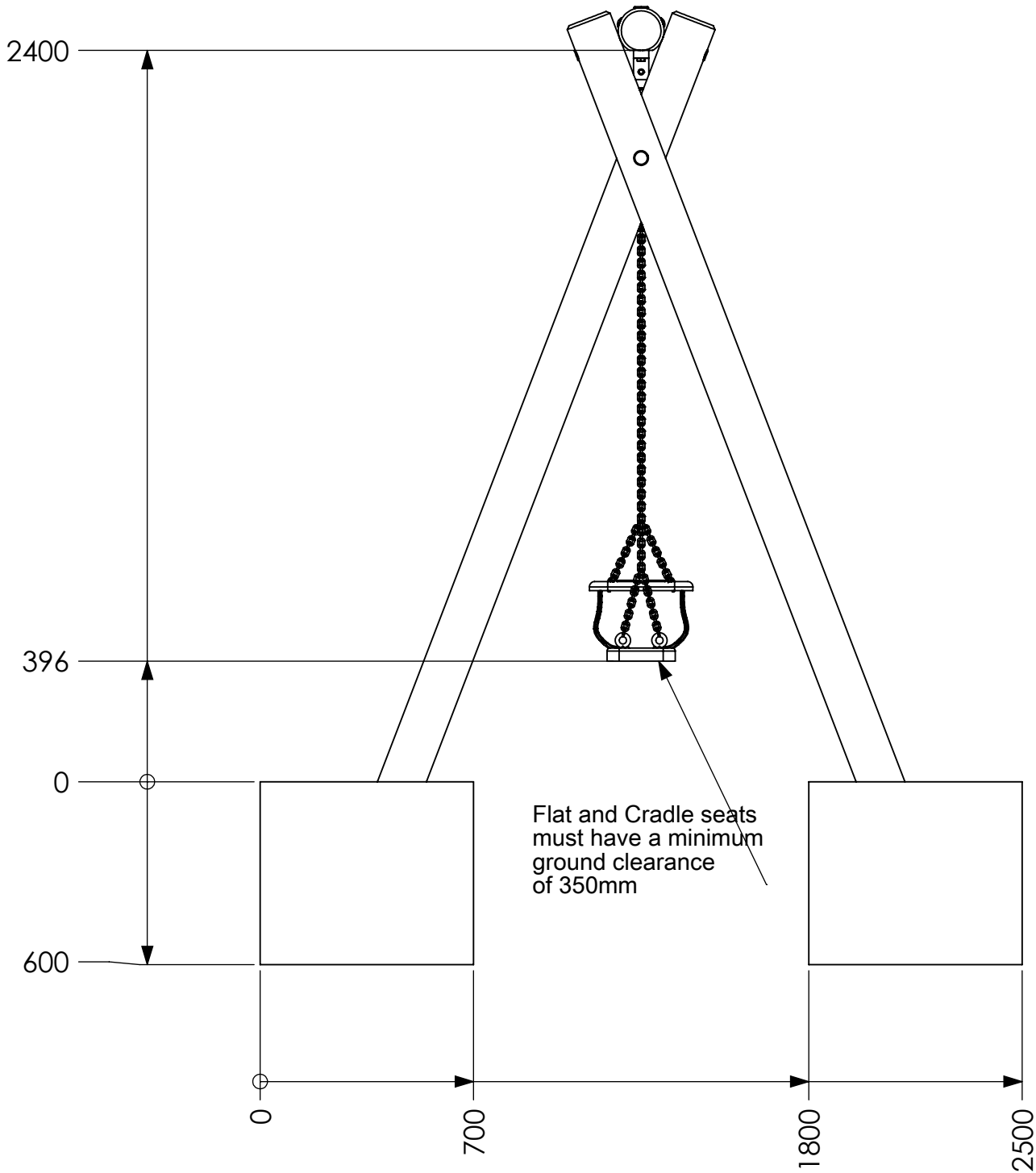


Dig all groundworks 600mm deep



Statement of Compliance: AE Evans Ltd. manufacturers of children's playground equipment follow the codes and practices outlined in the British and European Standards. By doing this, all equipment for play areas manufactured by AE Evans meets the requirements of BSEN 1176 (general safety and test methods). Spares can be supplied via equipment distributor.

Timber Swing 2.4m - 1 Flat and 1 Cradle

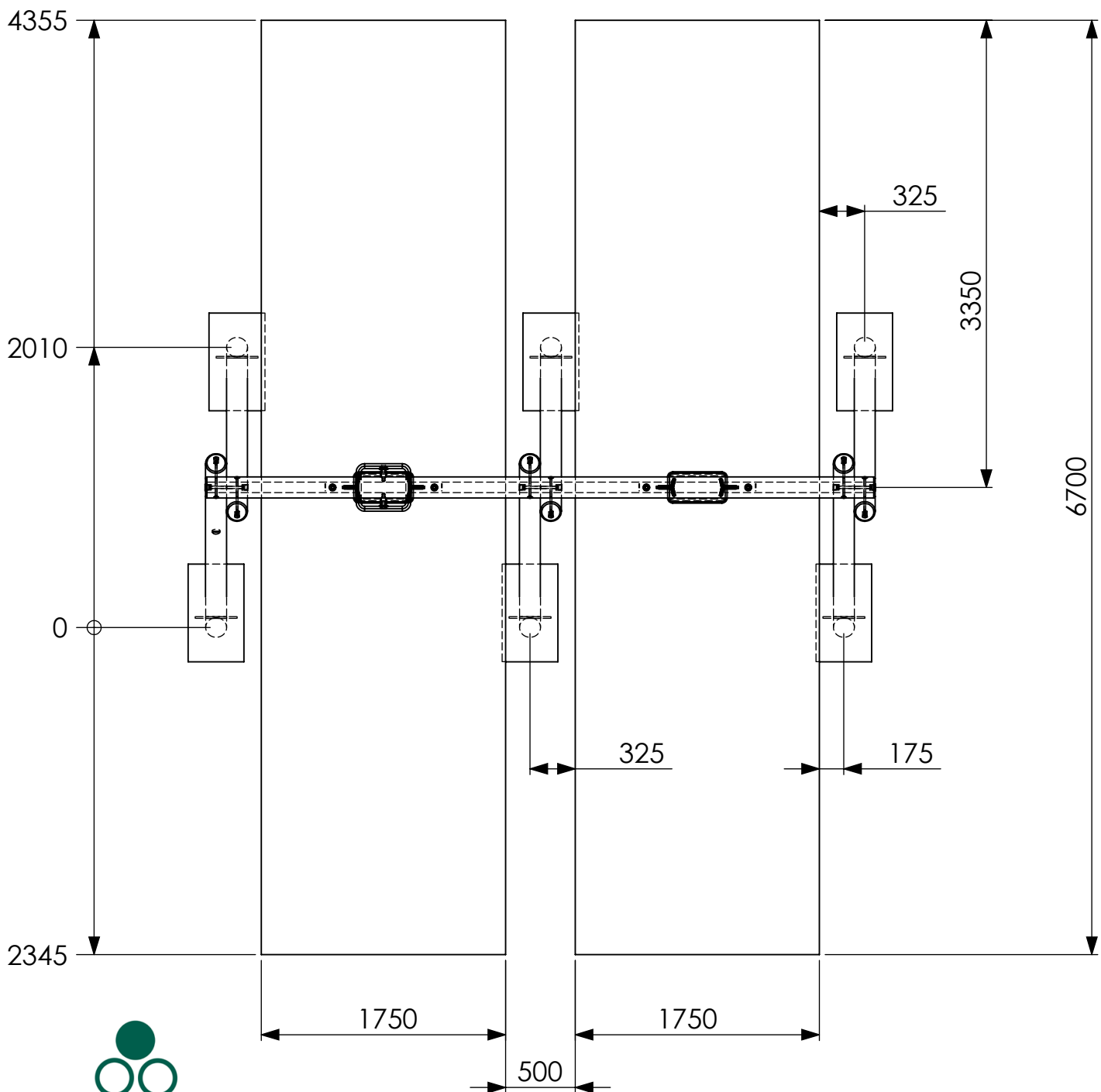


Timber Swing 2.4m - 1 Flat and 1 Cradle

Important Note

Safety surface area dimensions below are for wet pour surfacing (synthetic).
If loose fill is being used the length needs to be increased to 7.7m (from 6.7m)
to allow an extra 500mm of surfacing at either end.

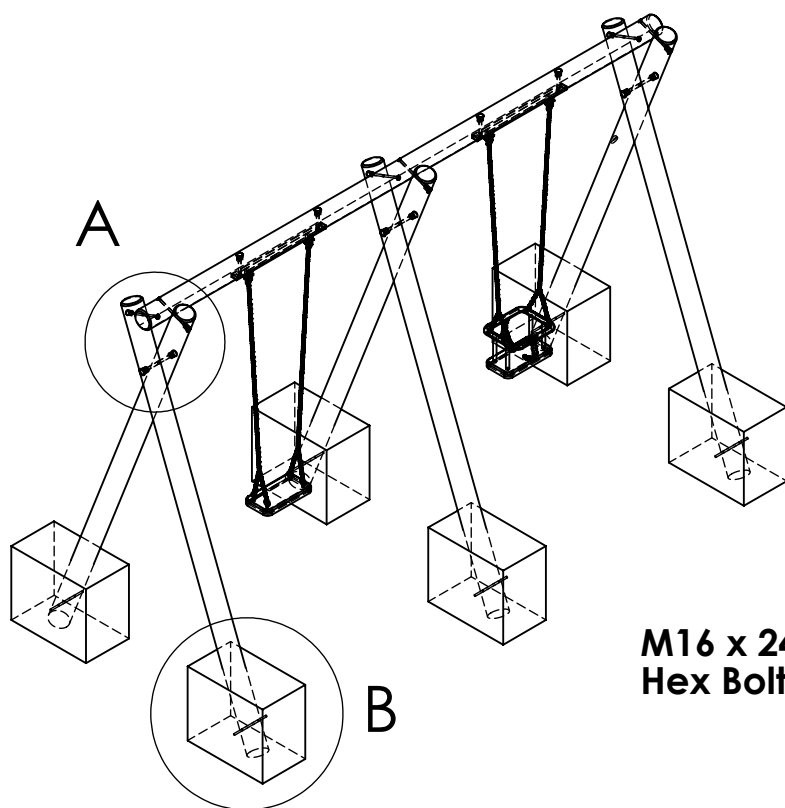
Additionally for a wet pour impact area that is level with the surrounding surface,
there must be an additional area with a length of 500mm in the direction of the swing
free from obstacles.



Timber Swing 2.4m - 1 Flat and 1 Cradle

Bolt List - Page 5 of 5

Revision - 0
Saved Date 08 June 2016 09:18:50



M12 x 280mm
CSH Bolts

M12 x 280mm
CSH Bolts

M16 x 240mm
Hex Bolts

DETAIL A
SCALE 1 : 10

Bolt List

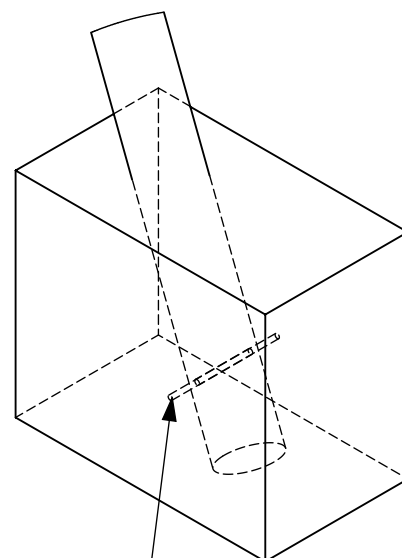
03 No M16 x 240mm Hex Bolts
03 No M16 Nylock Nuts
06 No M16 Washers
06 No M12 x 280mm CSH Bolts
06 No M12 Nylock Nuts
06 No M12 Washers
06 No 12mm dia x 300mm Solid Round Bar

06 No 40mm Black Inserts
06 No 33mm Black Inserts

Seats

01 No Flat Seat
01 No Cradle seat

M0577 comes pre-attached to T2435



DETAIL B
SCALE 1 : 15

Insert 12mm dia x 300mm Solid Bar
through each leg before
concreting.

