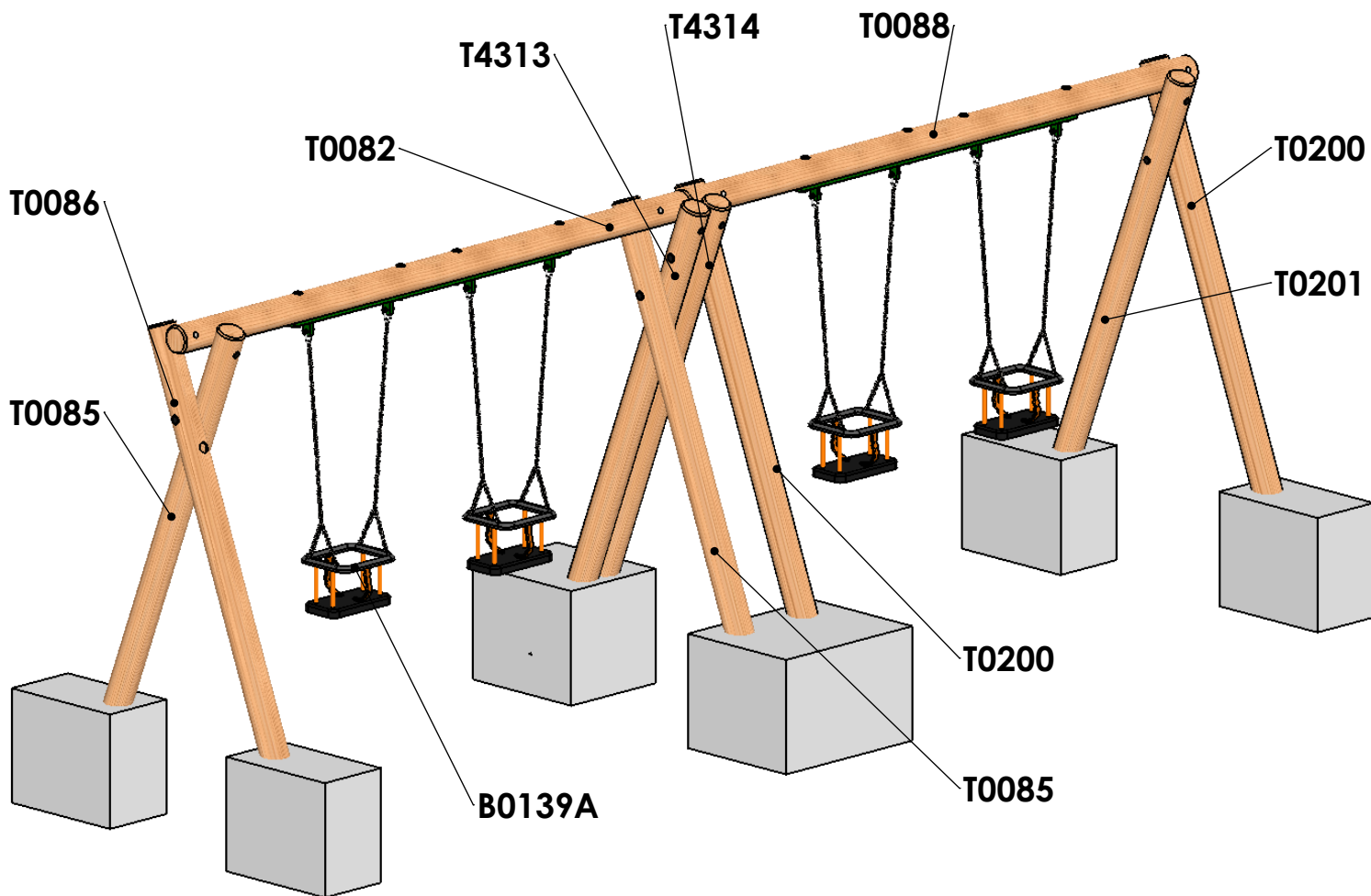


Timber Swing 2.0m - 4 Seat Cradle

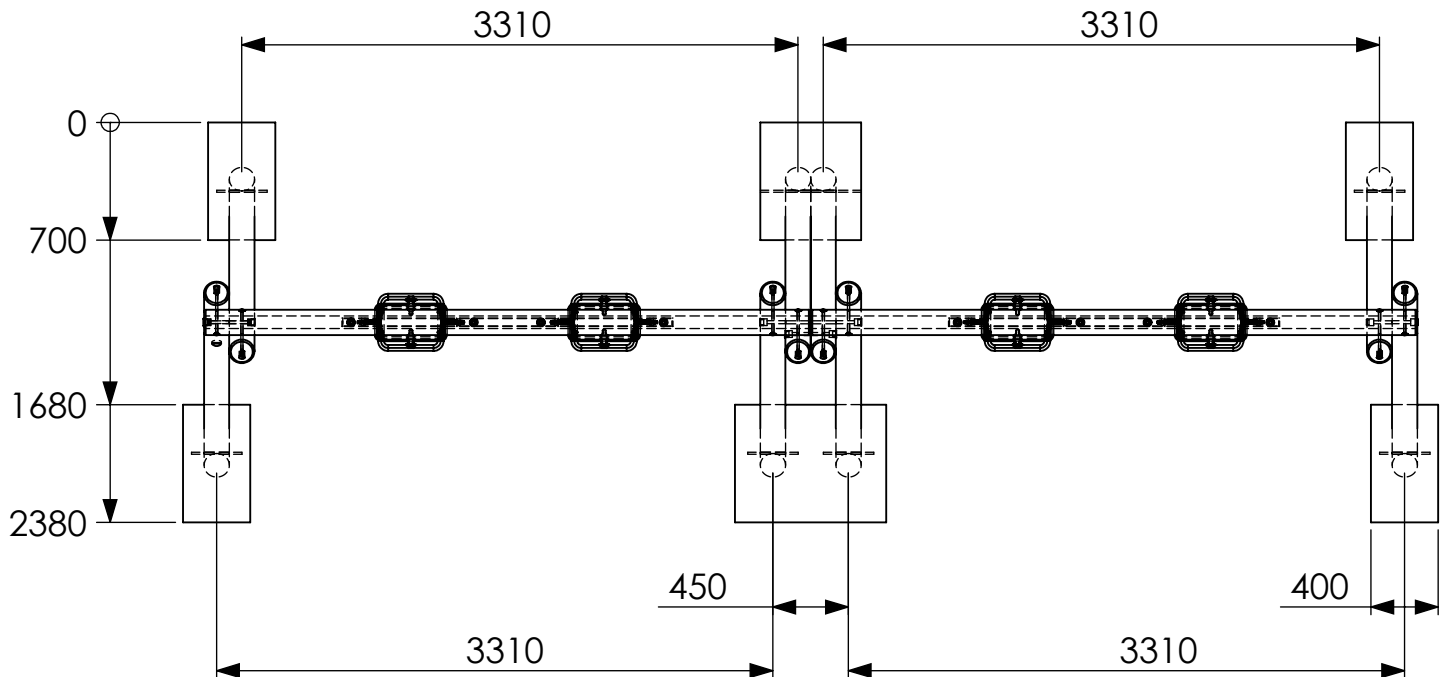
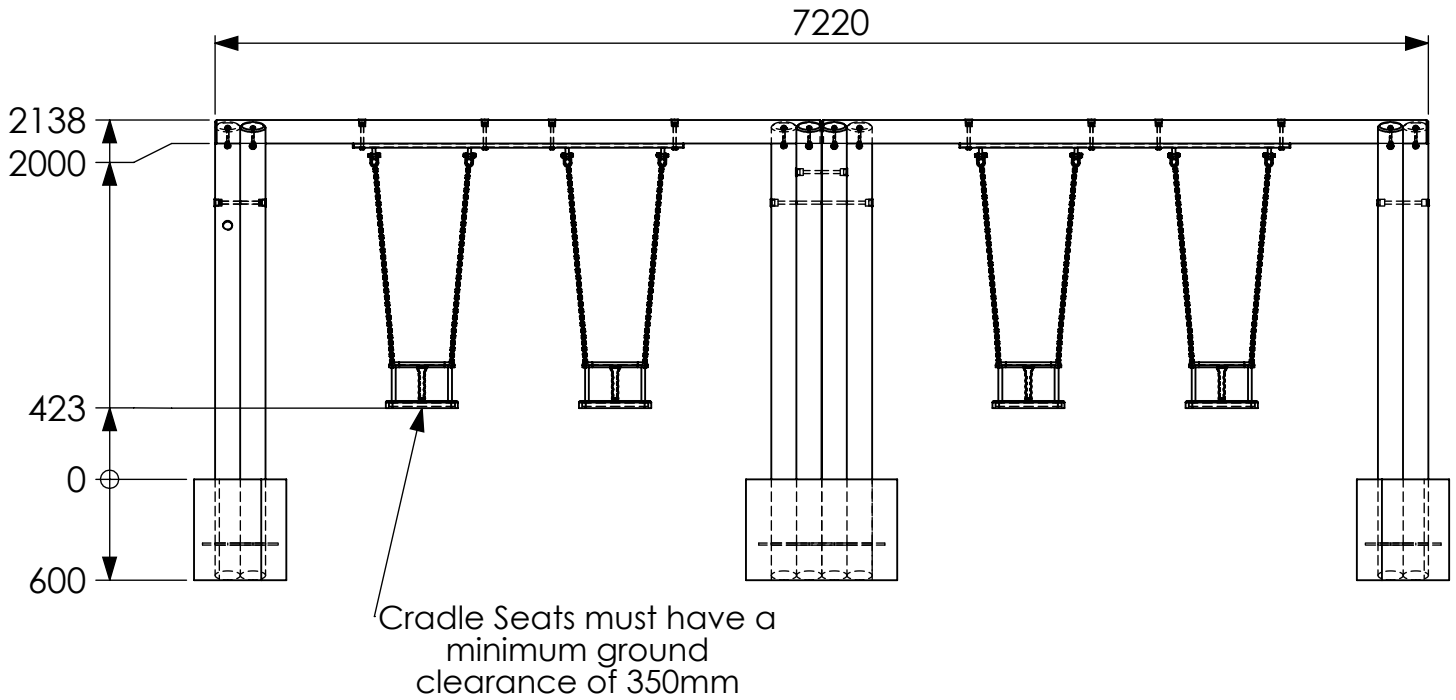
General Information - Page 1 of 4

Revision - 0
Saved Date 07 June 2016 17:01:38



ITEM NO.	PART NUMBER	DESCRIPTION	QTY.
1	T0082	Timber 150mm dia. cut at 3610mm DC	1
2	T0085	Timber 150mm dia. cut at 2866mm SC	2
3	T0086	Timber 150mm dia. cut at 2866mm SC	1
4	T0088	Timber 150mm dia. cut at 3610mm DC	1
5	T0200	Timber 150mm dia. cut at 2866mm SC	2
6	T0201	Timber 150mm dia. cut at 2866mm SC	1
7	B0139A	2.0m Cradle Seat with 1170mm Chain Fittings	4
8	M0527	Steel Box for 2 Seats	2
17	T4313	Timber 150mm dia. cut at 2866mm SC	1
18	T4314	Timber 150mm dia. cut at 2866mm SC	1

Timber Swing 2.0m - 4 Seat Cradle



Dig all ground works 600mm deep.



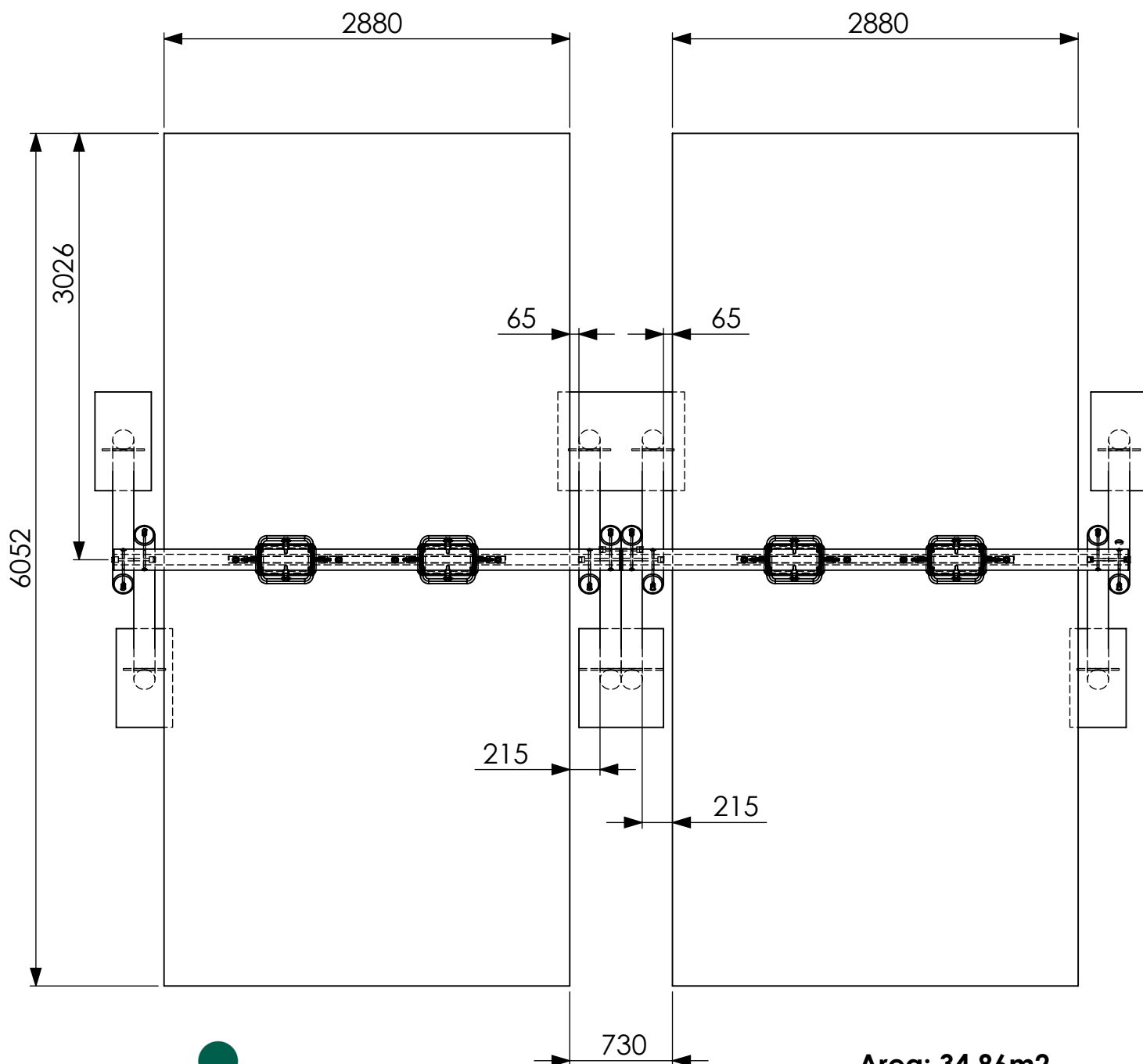
Statement of Compliance: AE Evans Ltd. manufacturers of children's playground equipment follow the codes and practices outlined in the British and European Standards. By doing this, all equipment for play areas manufactured by AE Evans meets the requirements of BSEN 1176 (general safety and test methods). Spares can be supplied via equipment distributor.

Timber Swing 2.0m - 4 Seat Cradle

Important Note

Safety surface area dimensions below are for wet pour surfacing (synthetic).
If loose fill is being used the length needs to be increased to 7.052m (from 6.052m)
to allow an extra 500mm of surfacing at either end.

Additionally for a wet pour impact area that is level with the surrounding surface,
there must be an additional area with a length of 500mm in the direction of the swing
free from obstacles.



Area: 34.86m²

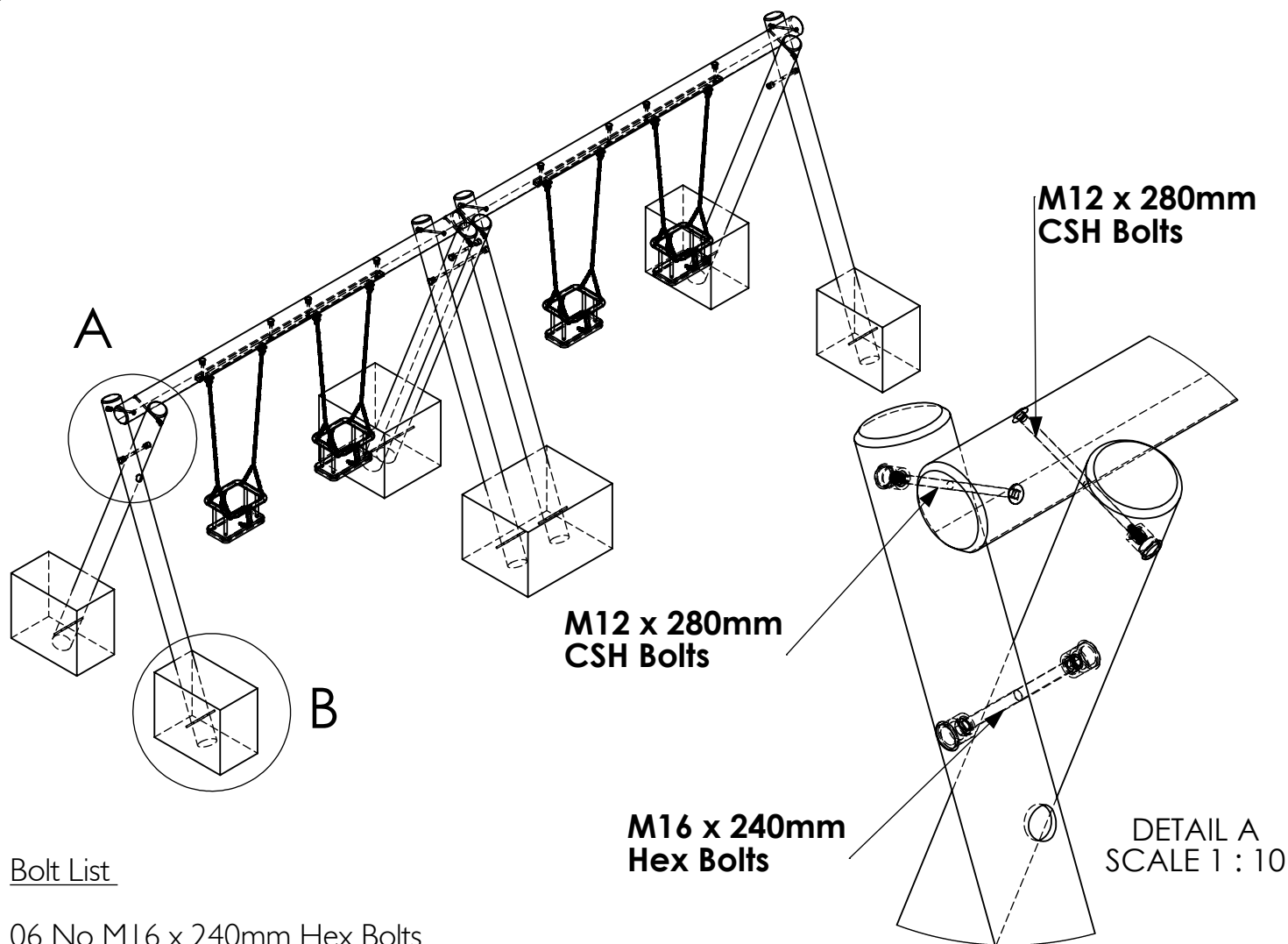
FFH: 1.2m



Timber Swing 2.0m - 4 Seat Cradle

Construction Detail - Page 4 of 4

Revision - 0
Saved Date 07 June 2016 17:01:38



Bolt List

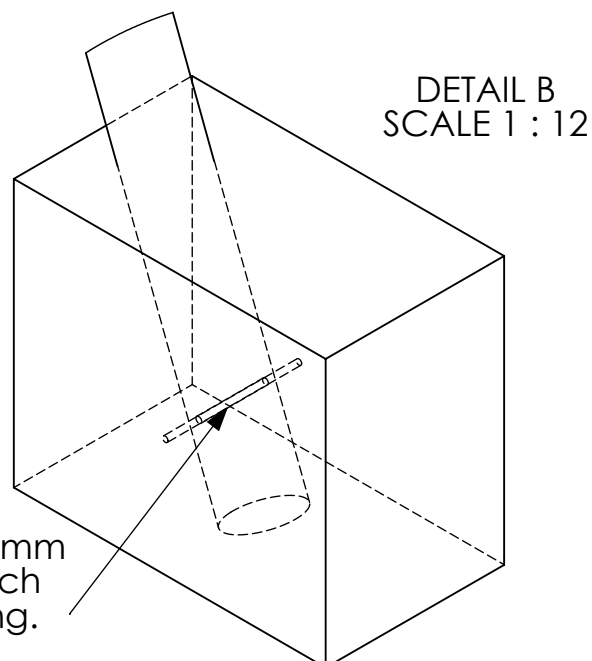
- 06 No M16 x 240mm Hex Bolts
- 06 No M16 Nylock Nuts
- 12 No M16 Washers
- 08 No M12 x 280mm CSH Bolts
- 08 No M12 Nylock Nuts
- 08 No M12 Washers
- 08 No 12mm x 300mm Long Solid Round Bar

- 12 No 40mm Black Inserts
- 08 No 33mm Black Inserts

Seats

- 04 No 2.0m Cradle Seat with Chains
(Chain Length 1170mm)

M0577 comes pre-attached T0088 and T0082



Insert 12mm dia 300mm solid bar through each leg before concreting.



ae evans

Statement of Compliance: AE Evans Ltd. manufacturers of children's playground equipment follow the codes and practices outlined in the British and European Standards. By doing this, all equipment for play areas manufactured by AE Evans meets the requirements of BSEN 1176 (general safety and test methods). Spares can be supplied via equipment distributor.