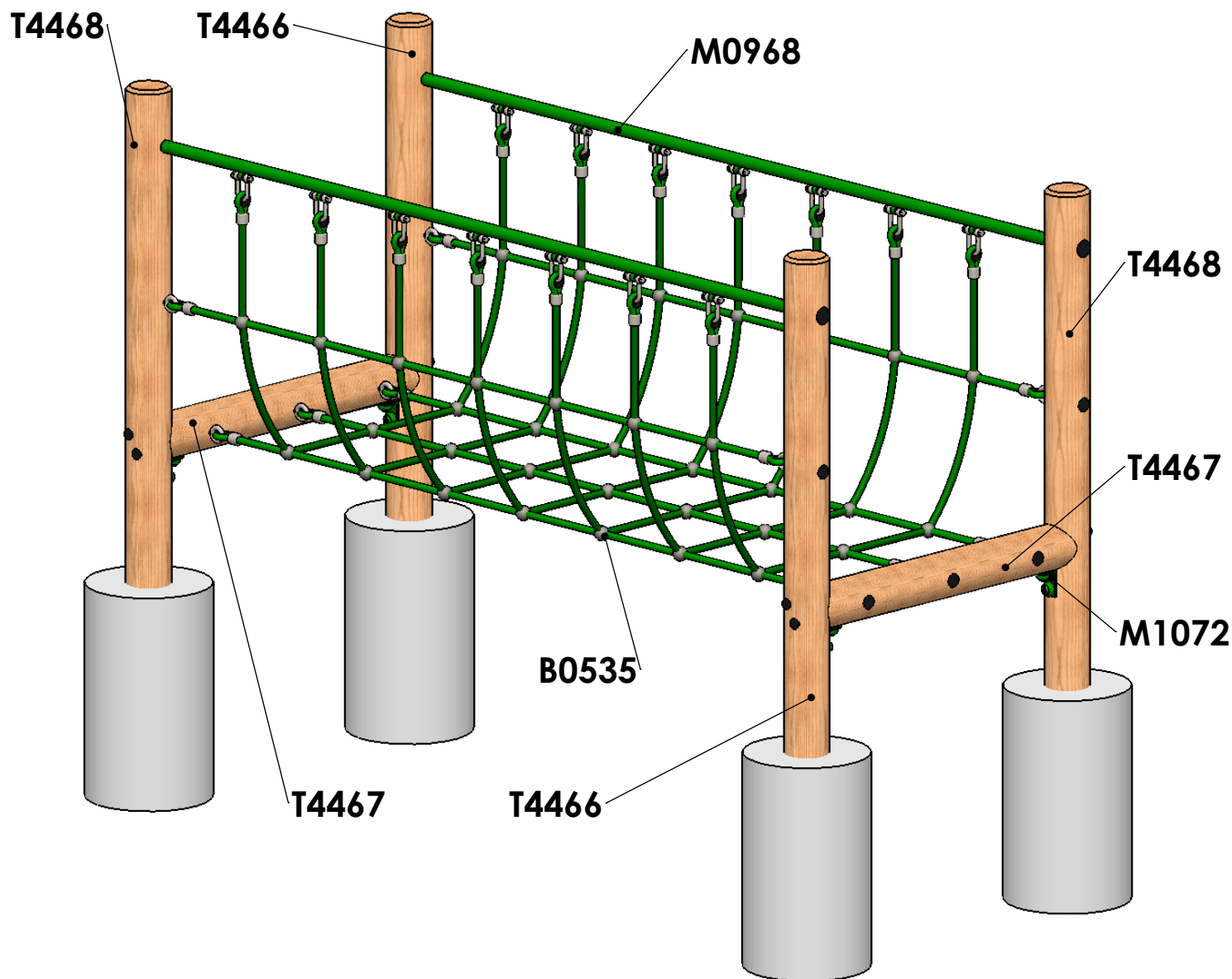


Rope Bridge.

General Information - Page 1 of 4

Revision - 0
Saved Date 29 July 2016 16:47:47

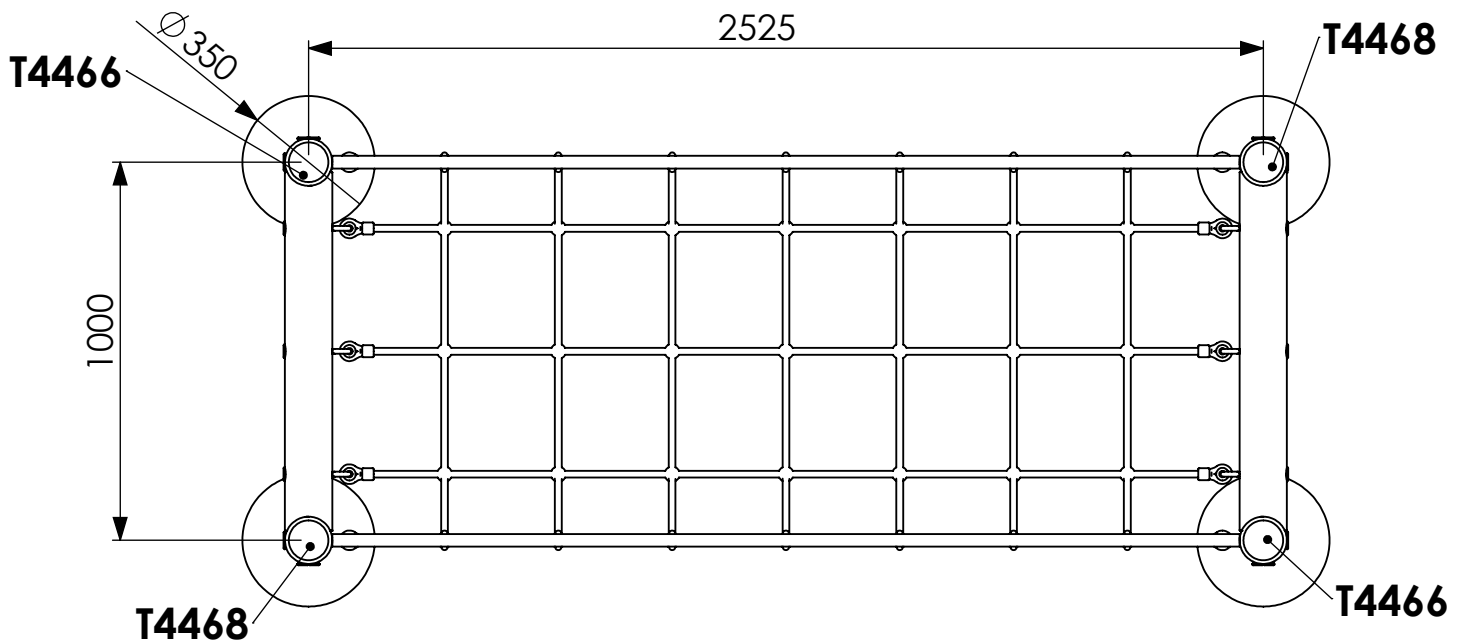
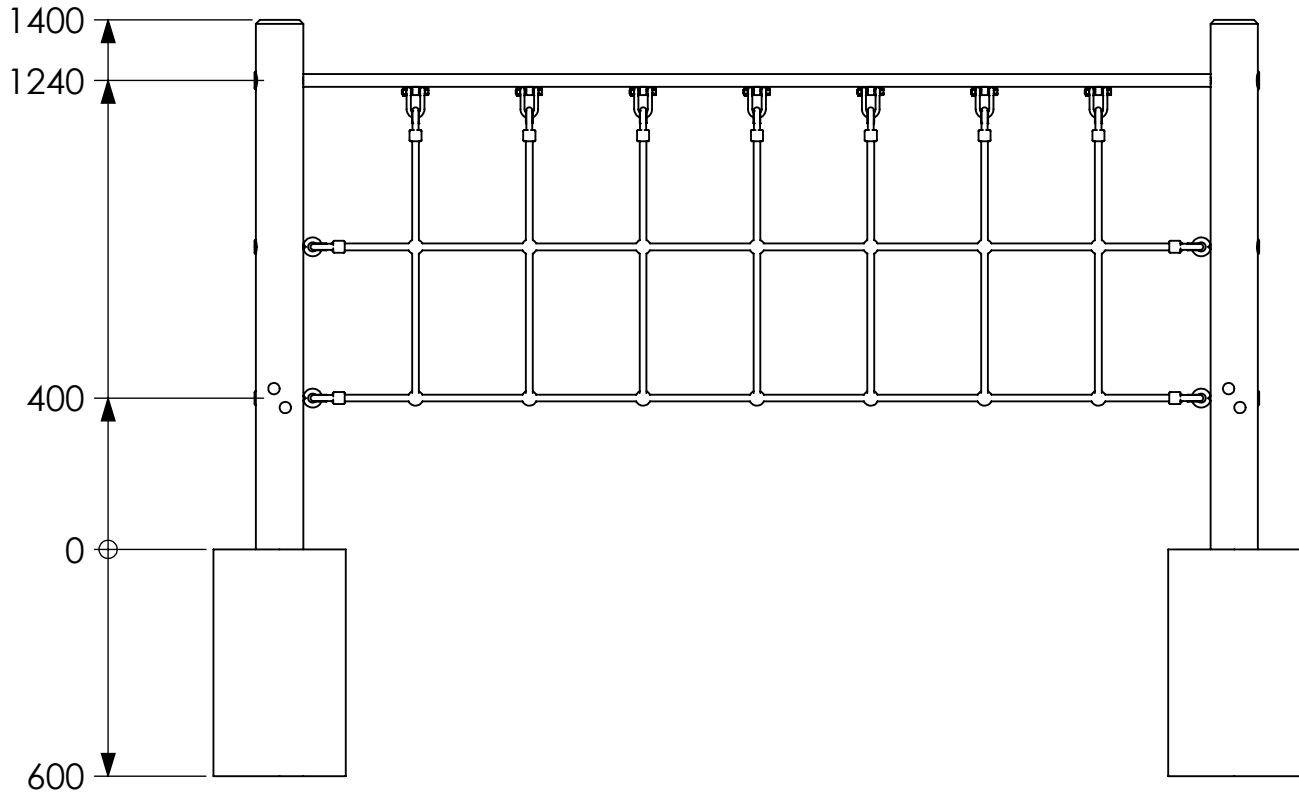


ITEM NO.	PART NUMBER	DESCRIPTION	QTY.
1	T4466	Timber 125mm dia. cut at 2000mm SC	2
2	T4467	Timber 125mm dia. cut at 1000mm	2
3	T4468	Timber 125mm dia. cut at 2000mm SC	2
4	B0535	Rope Bridge	1
5	M0968	2400mm Bridge Net Handrail	2
6	M1072	Angle Bracket 75 x 50 x 6mm	4



Statement of Compliance: AE Evans Ltd. manufacturers of children's playground equipment follow the codes and practices outlined in the British and European Standards. By doing this, all equipment for play areas manufactured by AE Evans meets the requirements of BSEN 1176 (general safety and test methods). Spares can be supplied via equipment distributor.

Rope Bridge.



Dig all groundworks 600mm deeps

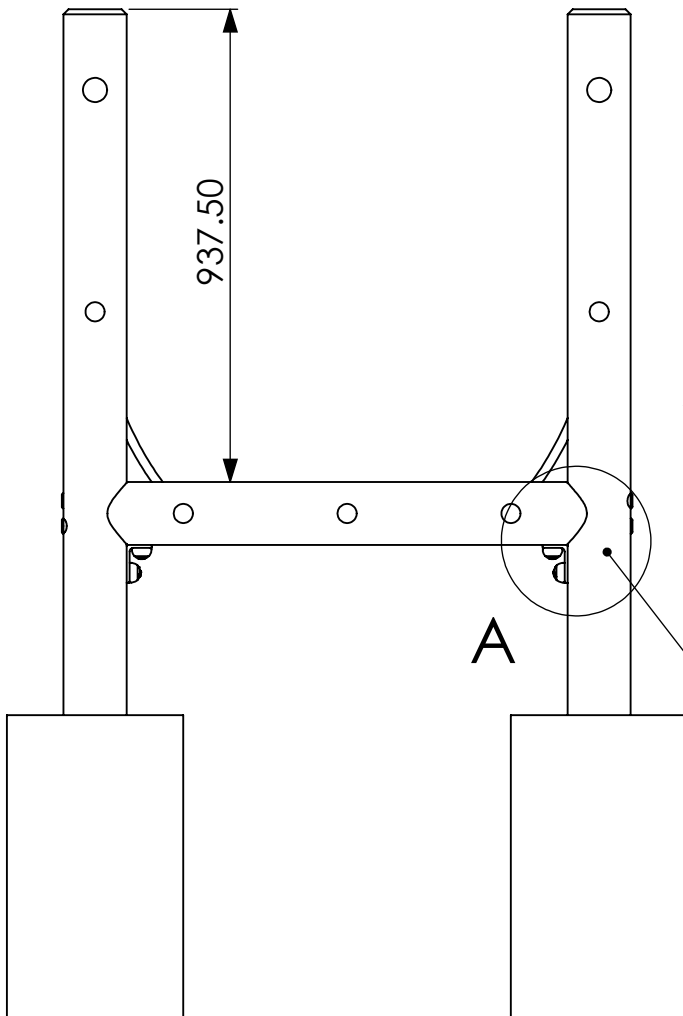


Rope Bridge.

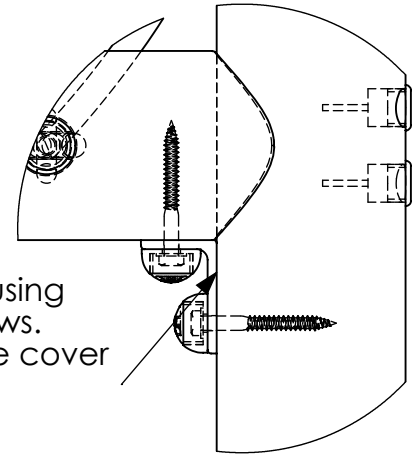
Construction Detail - Page 3 of 4

Revision - 0

Saved Date 29 July 2016 16:47:47



Fix M1072 in place using 2 x M8 x 75mm screws. Ensure all screws are cover with bolt covers.



DETAIL A
SCALE 1 : 5

Screw through Legs into cross supports using 200mm Screws. Once in place fit bracket M1072 to give additional support.

2 Brackets per end frame

Bolt List

Timber Crossbars T4467 to Legs T4466 and T4468

8 No 200mm Timberlock Screws
1 No Drive bit for above bolts
8 No M8 Washers
8 No 25mm Black Inserts

M0968 Handrail Fixings

4 No M16 x 110mm Hex Bolt
4 No M16 Washers
4 No 40mm Black Inserts

Rope Fixings

10 No M12 Washers
10 No M12 Nylock Nuts
10 No 33mm Black Inserts

Brackets M1072 to Timbers
8 No M8 x 75mm Coach Screws
8 No M8 Washers
8 No 2 Part Green Bolt Covers

Please note additional fixings have been included therefore you may have left overs

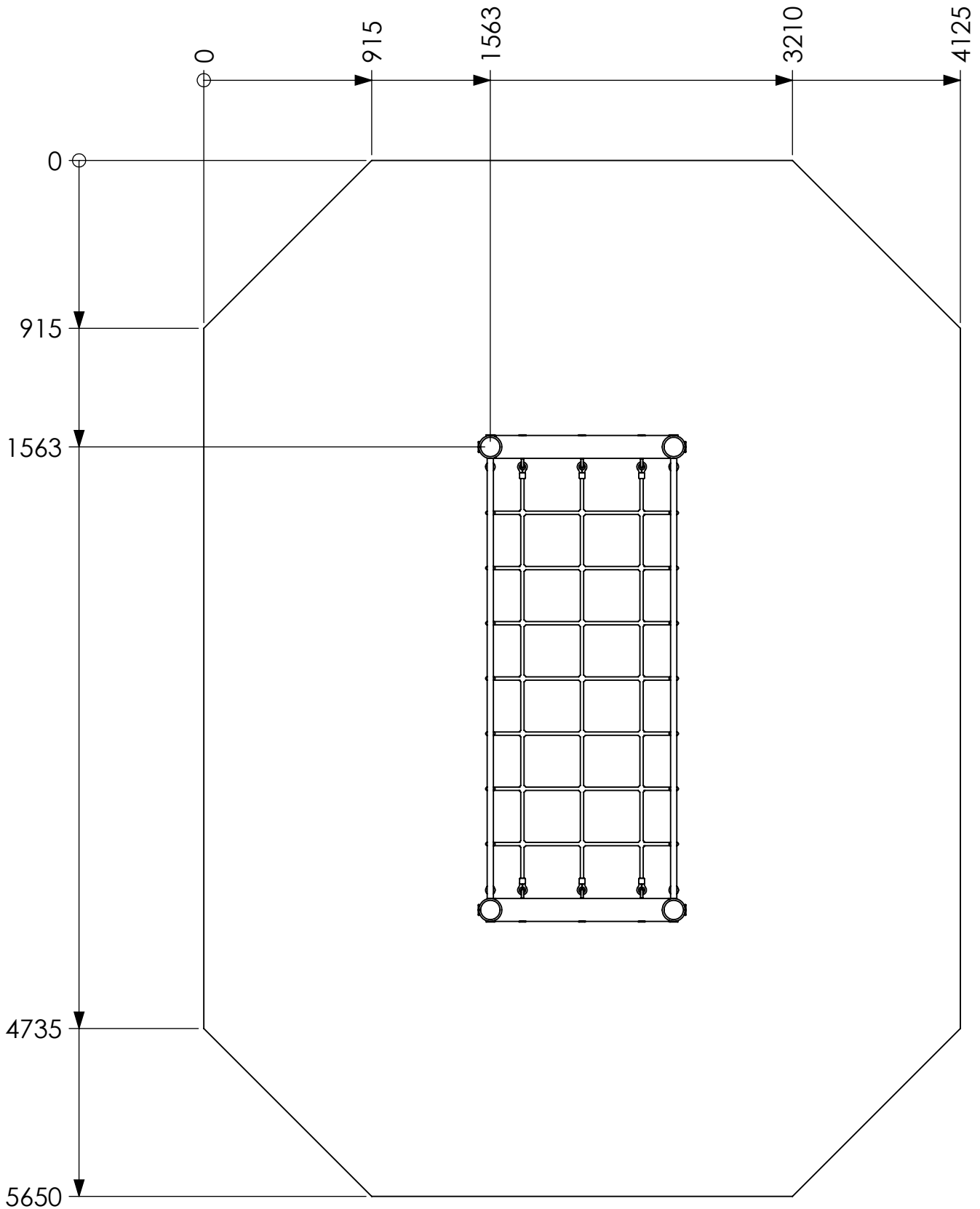


Rope Bridge.

Surfacing Detail - Page 4 of 4

Revision - 0

Saved Date 29 July 2016 16:47:47



Area = 21.6m²
FFH = 1.4m



Statement of Compliance: AE Evans Ltd. manufacturers of children's playground equipment follow the codes and practices outlined in the British and European Standards. By doing this, all equipment for play areas manufactured by AE Evans meets the requirements of BSEN 1176 (general safety and test methods). Spares can be supplied via equipment distributor.