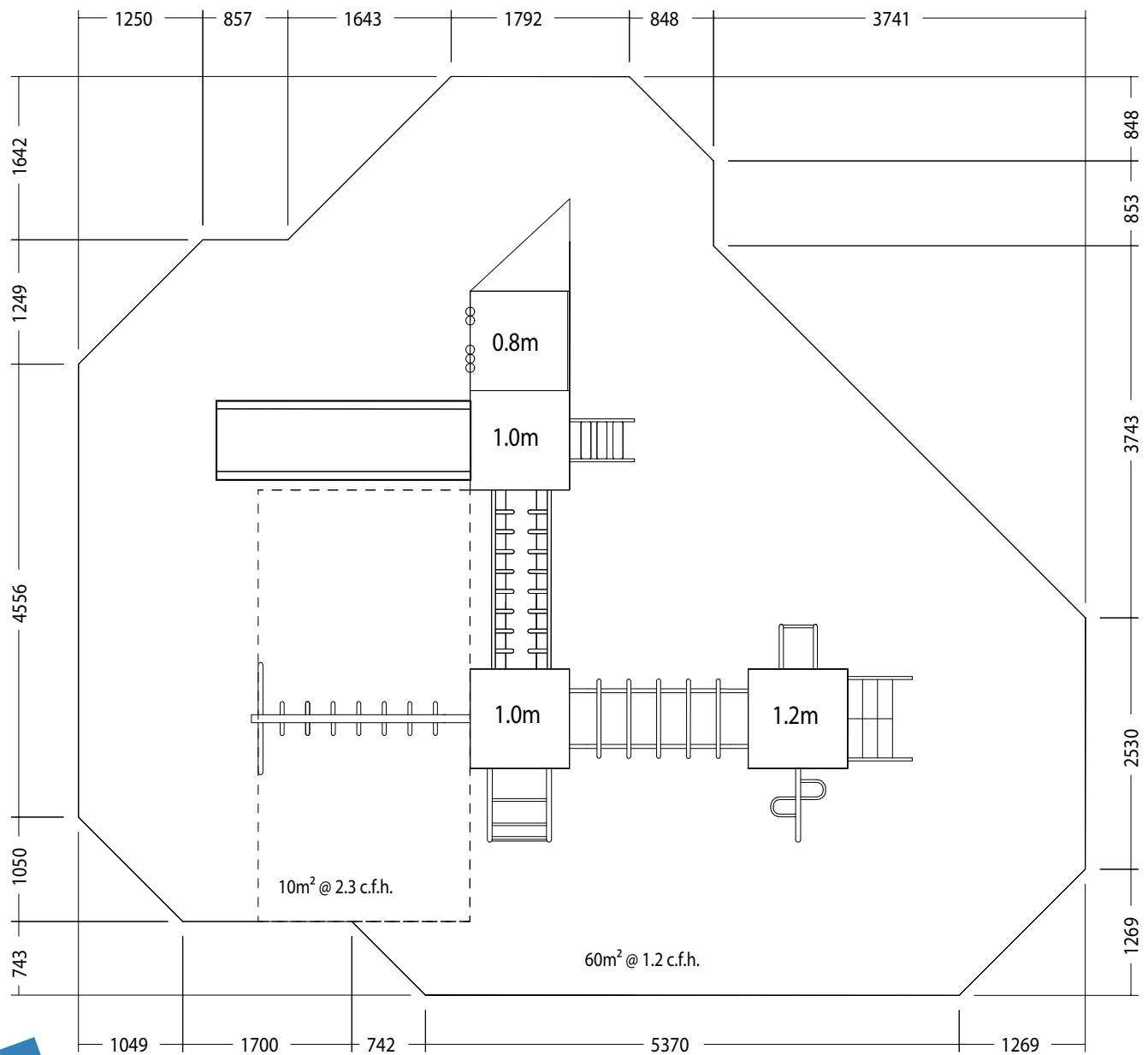


Installation details for **Ben Lomond Mountain multiplay (M1 14)**

| <u>Component list</u> | <u>Quantity</u> |
|--------------------------------|-----------------|
| 1.2m H sections | 2 |
| 1.0m H sections | 4 |
| 0.8m H sections | 1 |
| 0.4m Post | 1 |
| Triangular Platform | 1 |
| Square platforms | 4 |
| 1.0m Wide Slide, holder & foot | 1 |
| Access Steps | 1 |
| Steel Ladder | 1 |
| Access Net | 1 |
| Hoop Trapeze & Side | 1 |
| Climb Bar | 1 |
| Snake Ladder | 1 |
| Monkey Walk | 1 |
| Hoop Climber | 1 |
| Grab Handle | 1 |
| Count the Shapes Panel | 1 |
| Circular Entry Panel | 1 |
| Arch Climber | 1 |

- 1) Construct base as per layout drawing P/MO12/1 ensuring the correct levels for safety surfacing.
- 2) Excavate 400mm x 400mm holes for H sections as in drawing P/MO12/2 to a depth of 450mm from finished surfacing level. (All H sections have finished ground level marks)
- 3) Assemble the numbered H sections together in pairs (i.e.1 to 2, 3 to 4 & 5, 6, 7 & 8) with a platform (7 to 8 uses triangular platform) using M10 x 30 resistorx & nylon washers, and place in to the corresponding excavated holes (see P/MO12/2 for corresponding hole & H/post numbers)
Tap holes with a 10mm tap and make sure bolts are only hand tight at this stage
- 4) Connect together using the stated links. i.e. Monkey Walk & Hoop Climber.
- 5) When all H sections and links have been fitted, level in all directions and check distances from edge of surfacing area.
- 6) Mark out for access points as drawing P/MO12/3 and excavate to a depth of 450 as before (550mm for the slide foot)
- 7) Assemble all other items of equipment as drawing P/MO12/4 using M10 x 30 resistorx & nylon washers.
- 8) Note: M10 x 25 resistorx are used to connect the slide to the foot.
- 9) Connect the panels using M10 x 50 resistorx, steel washers x 2, nyloc & plastic cap sets.
- 10) Once all equipment is fitted check levels again, tighten all bolts & concrete in to the ground.



BASE LAYOUT DRAWING FOR BEN LOMOND MULTI UNIT

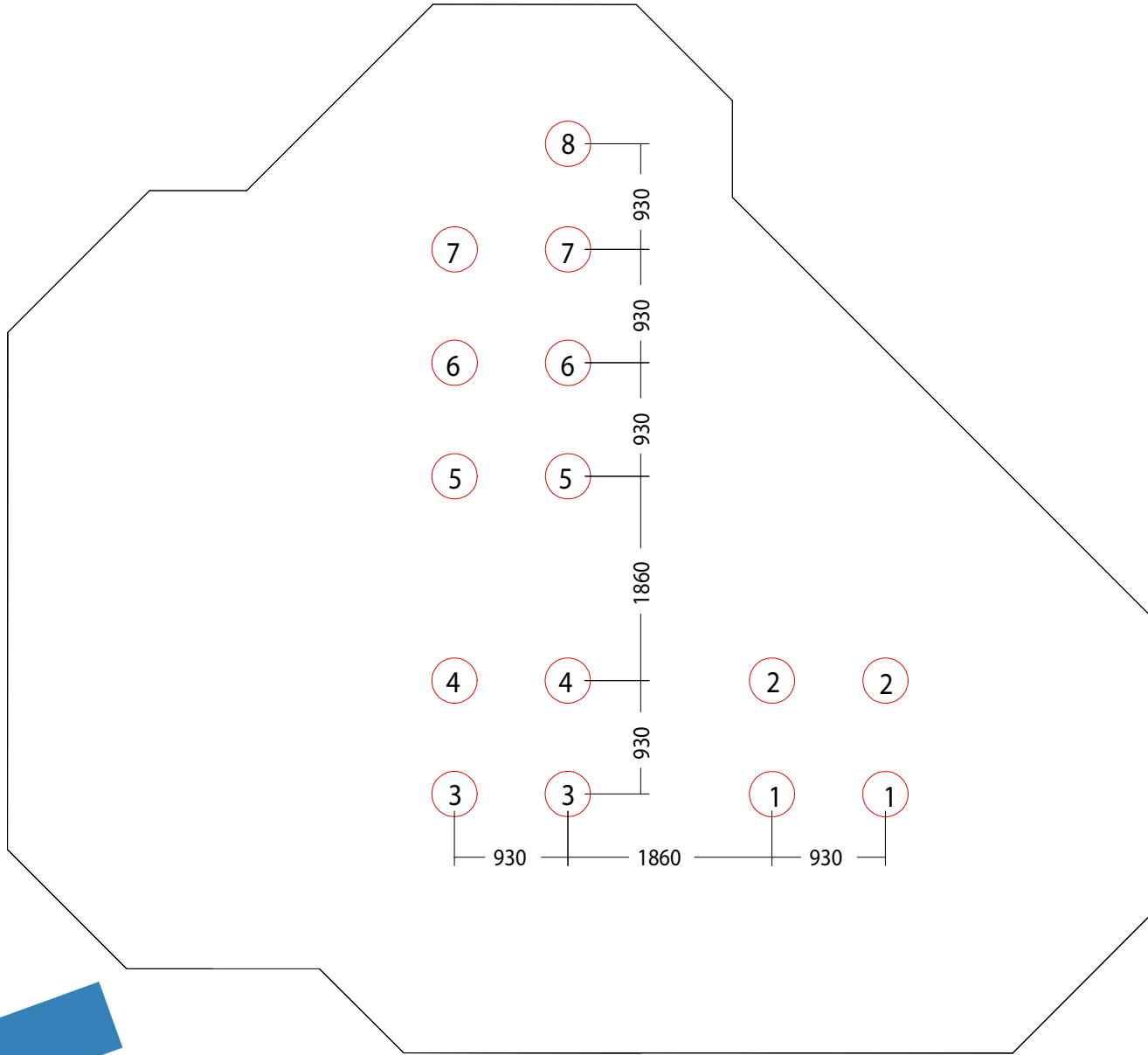
DRG. No.

P/MO12/01

SCALE

N/A

DATE 18/06/2014

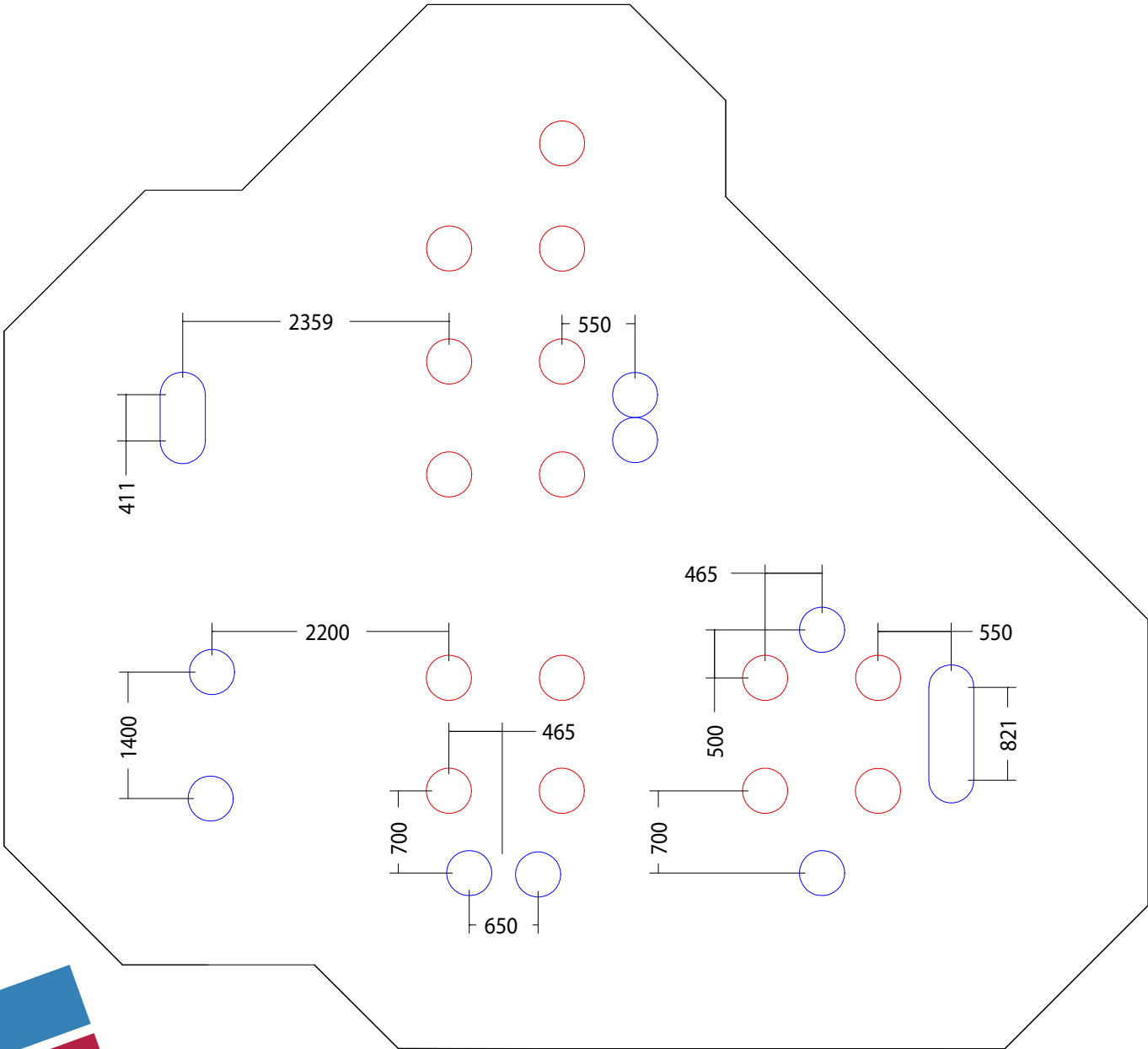


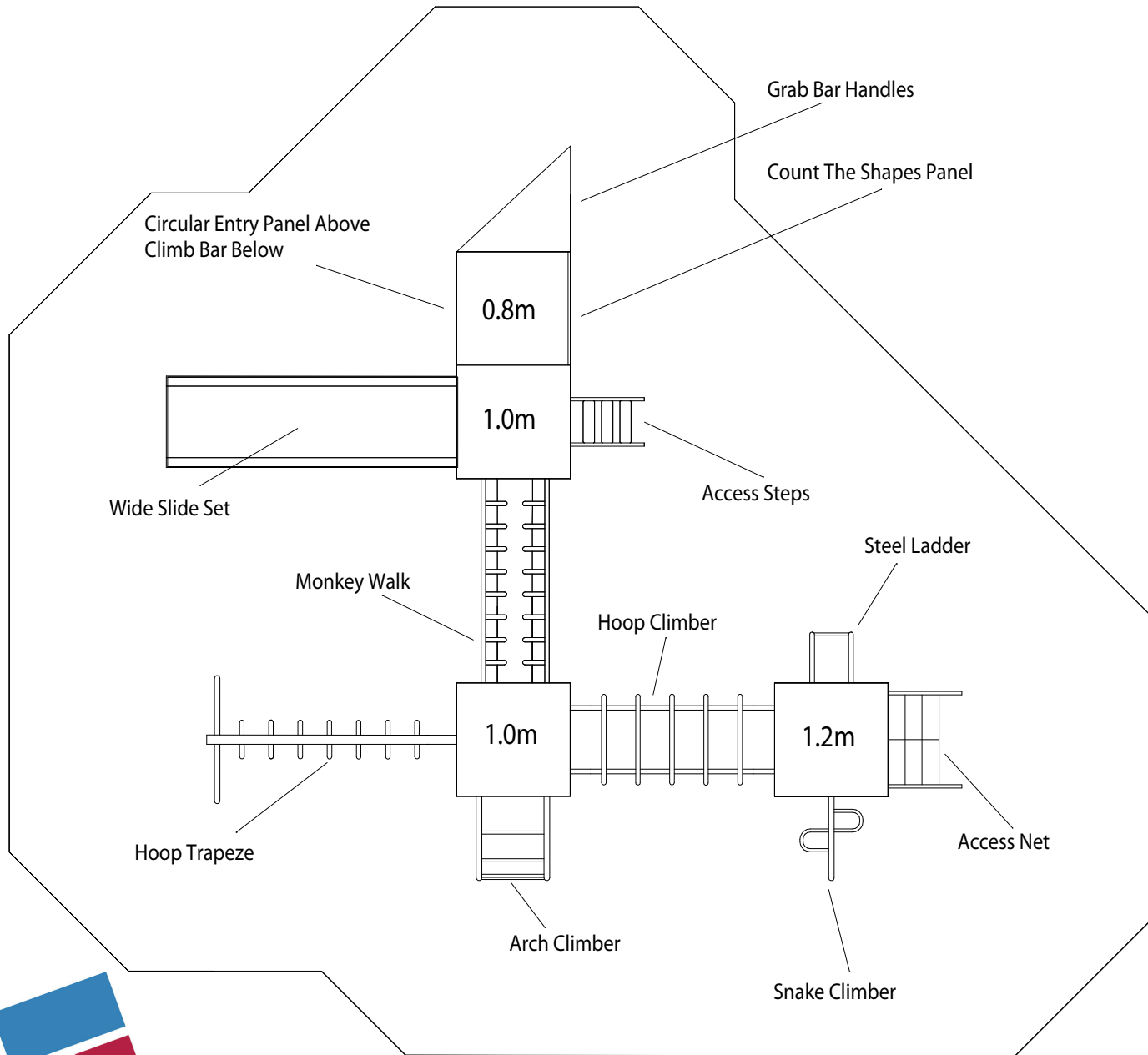
H SECTION HOLE LAYOUT DRAWING FOR BEN LOMOND MULTI UNIT

DRG. No. P/MO12/02

SCALE N/A

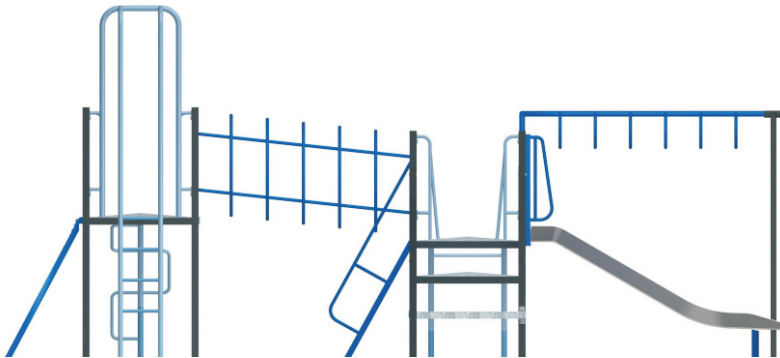
DATE 18/06/2014



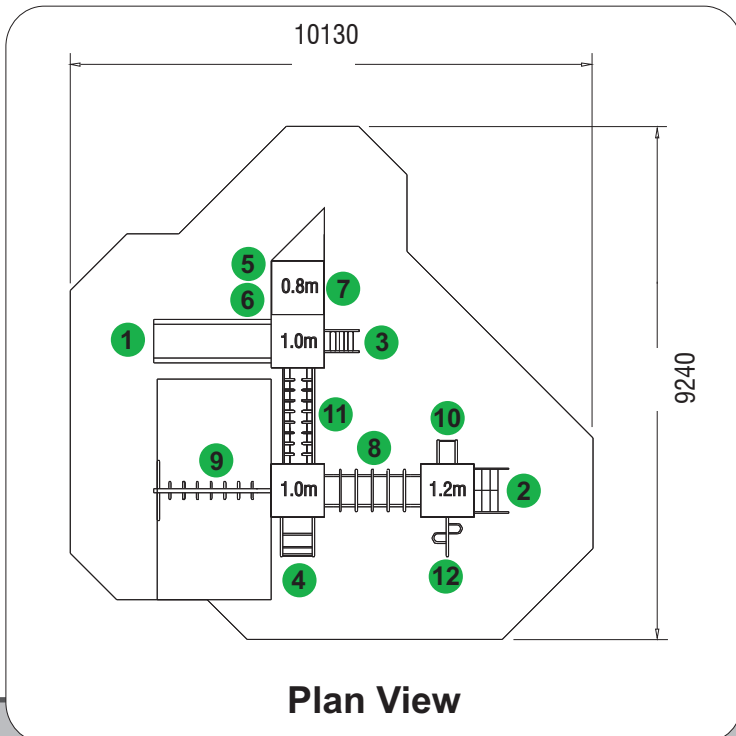




All Play & Leisure's product range is fully compliant with **BS EN 1176:2008**



Side Elevation



Plan View

Features

- 1 Wide Stainless Steel Slide
- 2 Access Chain Net
- 3 Access Steps
- 4 Arch Climber
- 5 Circular Entry Panel
- 6 Climb Bars
- 7 Count The Shapes Play Panel
- 8 Hoop Climber
- 9 Hoop Trapeze
- 10 Ladder
- 11 Monkey Walk
- 12 Snake Climber

Technical AT-A-GLANCE

| |
|-------------------------------------|
| Product Code |
| M114 |
| Equipment Size |
| 6648L x 6518W x 3000H |
| Minimum Space |
| 10130 x 9240 |
| Free Height of Fall |
| 1200 & 1800 |
| Safety Surface Area |
| 58m ² & 10m ² |

