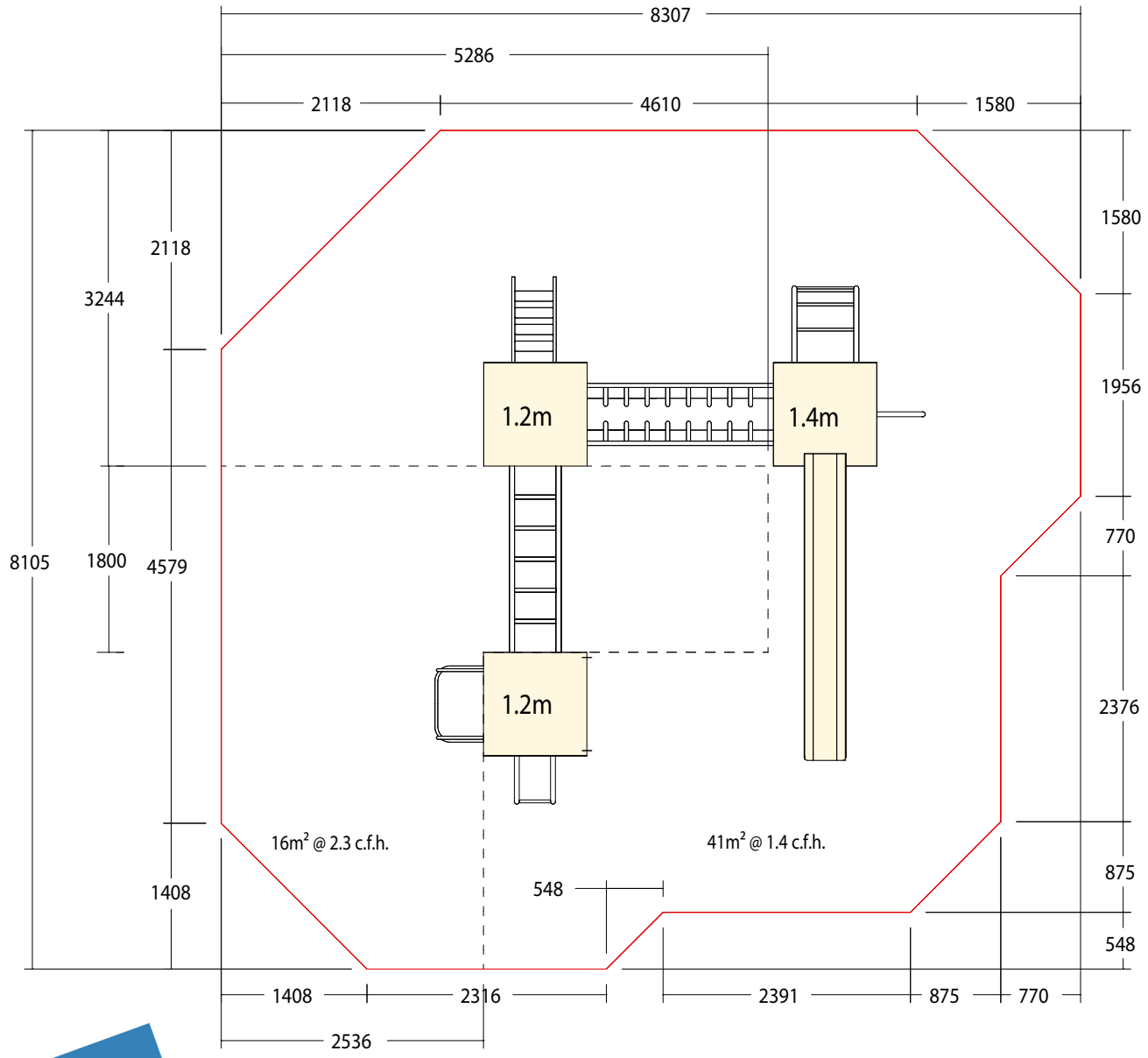


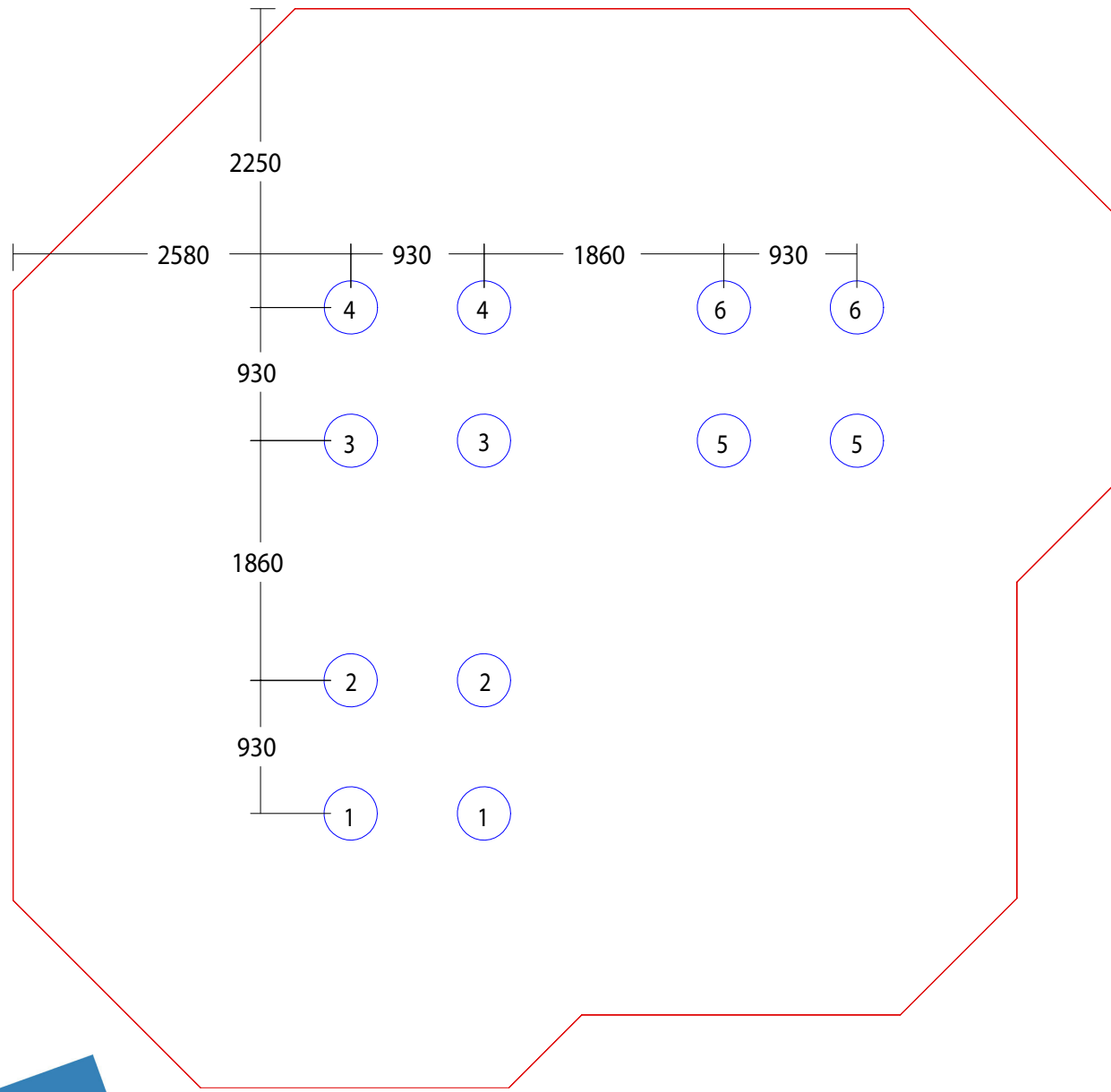
## Installation details for **Crossfell Mountain multiplay (M1 10-LF)**

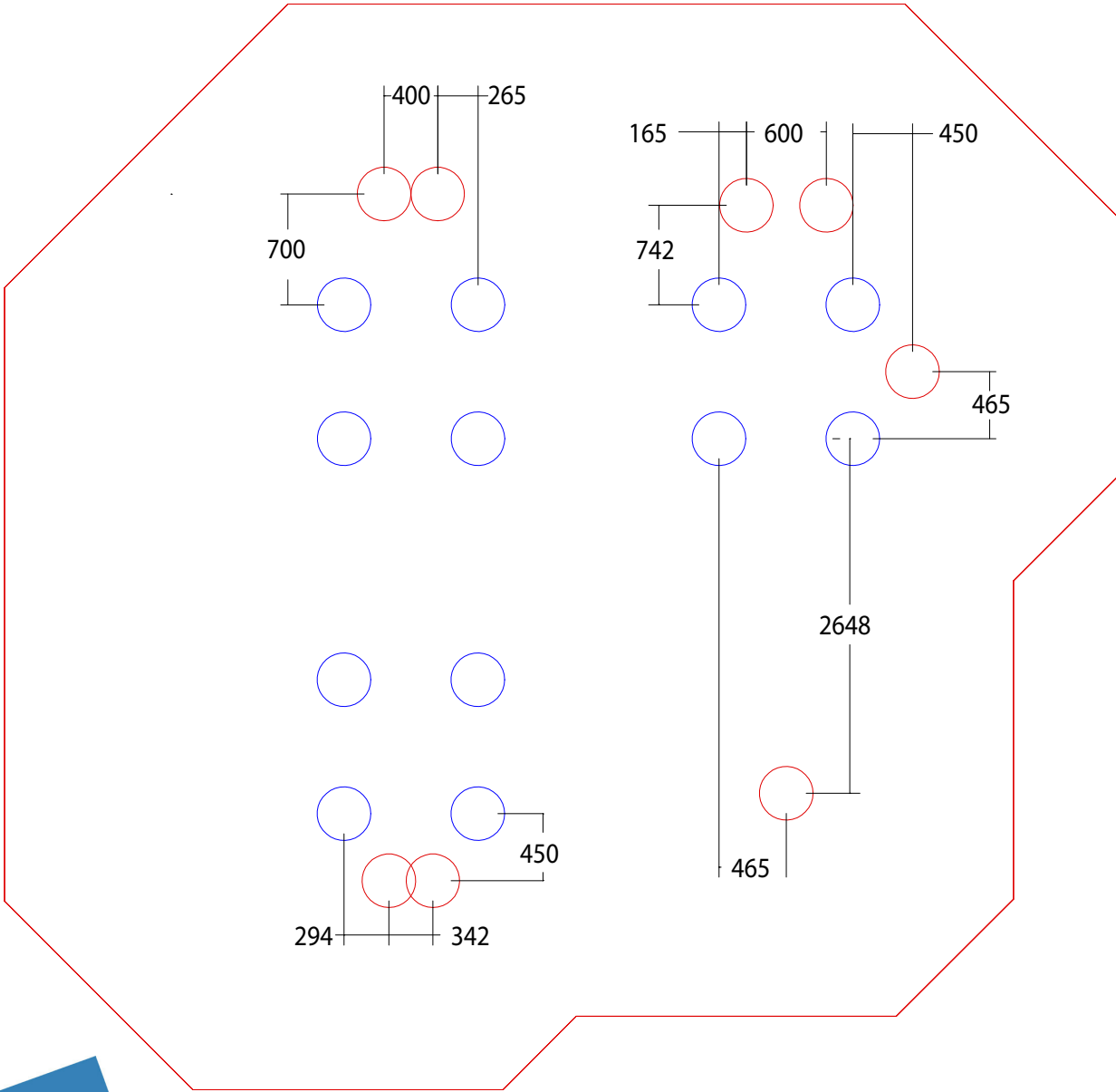
### Component list

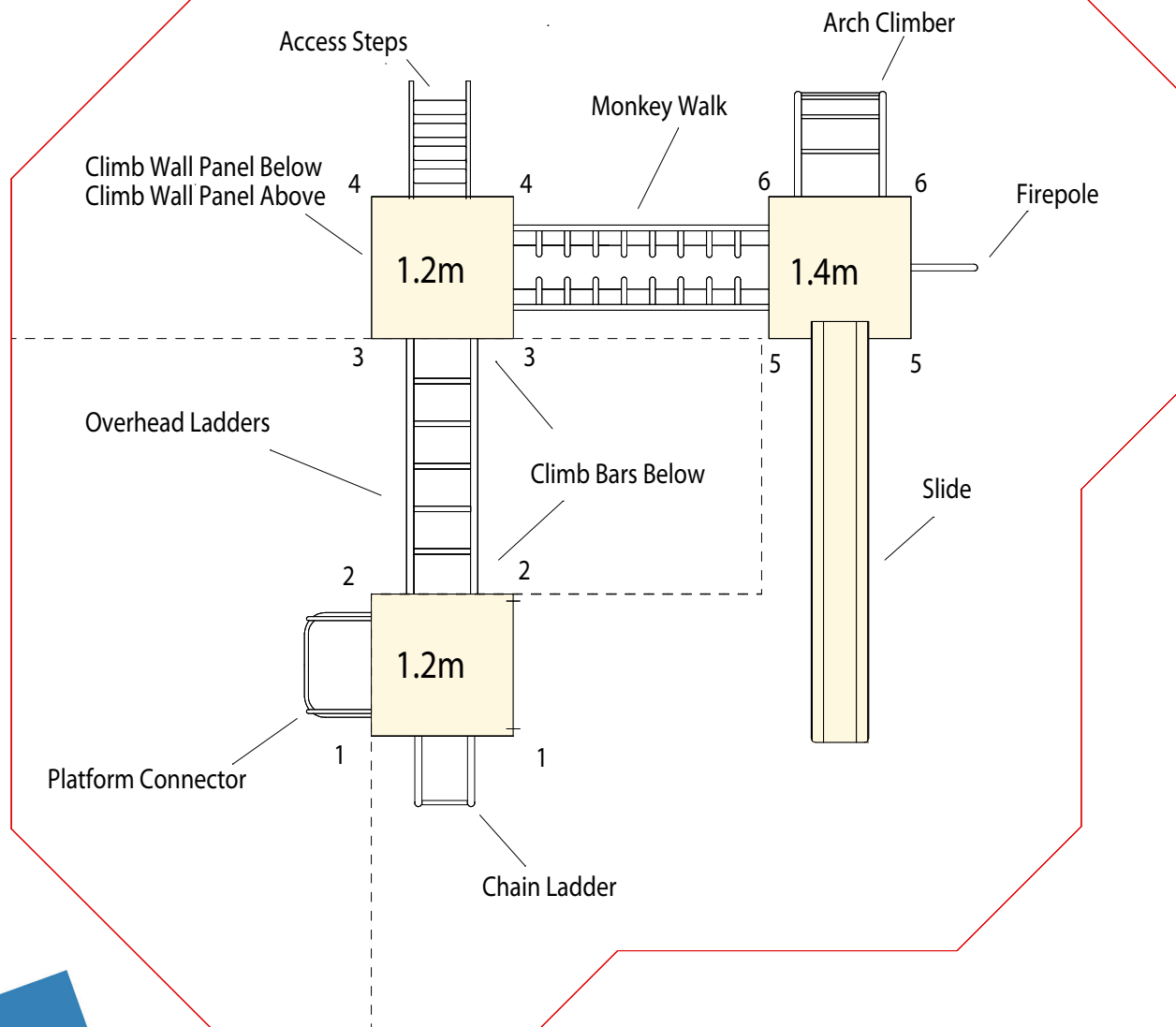
1.2m H sections	4
1.4m H sections	2
Square platforms	4
1.4m slide, holder & foot	1
Access Steps	1
Arch Climber	1
Firepole	1
Monkey Walk Riser	1
Climb Wall Panel	2
Overhead Ladders	1
Platform Connector	1
Chain Ladder	1
Safety Barrier	1
Climb Bars	2

- 1) Construct base as per layout drawing P/MO08/1 ensuring the correct levels for safety surfacing.
- 2) Excavate 400mm x 400mm holes for H sections as in drawing P/MO08/2 to a depth of 750mm from finished surfacing level. (All H sections have finished ground level marks)
- 3) Connect the numbered H sections (i.e. 1 to 2, 3 to 4 & 5 to 6) to the platforms and place in to the corresponding excavated holes (see P/MO08/4 for corresponding hole/H numbers)
- 4) Connect together using the stated links. ie Monkey Walk & Overhead Ladders.
- 5) When all H sections and links have been fitted, level in all directions and check distances from edge of surfacing area.
- 6) Mark out for access points as drawing P/MO08/3 and excavate to a depth of 750 as before (850mm for the slide foot)
- 7) Assemble all other items of equipment as drawing P/MO08/4 using M10 x 30 resistorx & nylon washers.
- 8) Note: M10 x 25 resistorx are used to connect the slide to the foot.
- 9) Connect the panels using M10 x 50 resistorx, steel washers x 2, nyloc & plastic cap sets.
- 10) Once all equipment is fitted check levels again, tighten all bolts & concrete in to the ground.



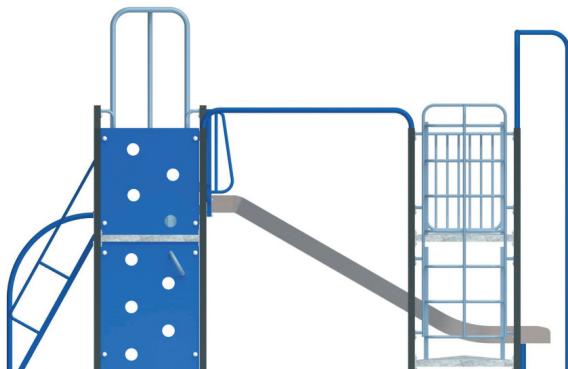








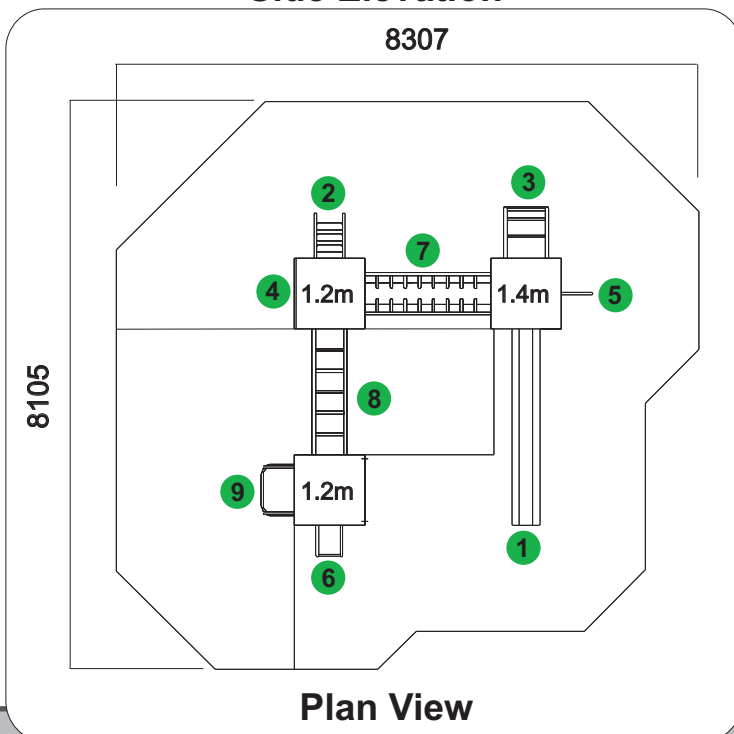
✓ All Play & Leisure's product range is fully compliant with **BS EN 1176:2008**



Side Elevation

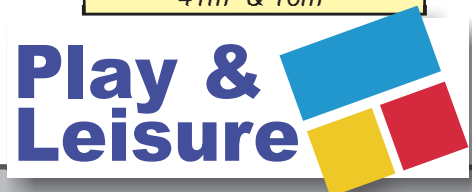
## Features

- 1 Stainless Steel Slide
- 2 Access Slide
- 3 Arch Climber
- 4 Climb Wall
- 5 Fireman's Pole
- 6 Chain Ladder
- 7 Monkey Wall
- 8 Overhead Ladder
- 9 Platform Connector



## Technical AT-A-GLANCE

<b>Product Code</b>	M110
<b>Equipment Size</b>	4700L x 4933W x 3200H
<b>Minimum Space</b>	8307 x 8105
<b>Free Height of Fall</b>	1400 & 2300
<b>Safety Surface Area</b>	41m <sup>2</sup> & 16m <sup>2</sup>



# **Maintenance Schedule**

## **Maintenance & Inspection**

All Play & Leisure's products should be inspected and maintained in accordance with the recommendations as detailed in BS EN 1176-7:2008

If any part of the equipment is found to be unsafe during an inspection and cannot be immediately rectified the equipment should be protected against further use.

## **Routine Visual Inspection.**

Routine visual inspections are to be conducted to identify obvious hazards resulting from vandalism, use or weather conditions. e.g. Hazards such as broken parts or broken bottles.

## **Operational Inspection.**

To reduce accidents the operator should ensure an appropriate routine maintenance schedule is established, implemented and maintained. Inspection shall be carried out on a monthly basis, although consideration should be taken regarding local conditions and usage.

During a operational inspection the following should be included:

- Tightening of fastenings.
- Re-painting and re-treatment of surfaces.
- Maintenance of any impact attenuating surfaces.
- Lubrication of bearings.
- Marking of equipment to signify loose fill finished surface levels.
- Cleaning.
- Removal of broken glass and other debris or contaminants.
- Restoring loose fills to the correct level.
- Maintenance of free space areas.

## **Annual Main Inspection (NOT EXCEEDING 12 MONTHS)**

Inspection intended to establish the overall level of safety of equipment, foundation and playing surfaces.

- Effects of weather.
- Rotting or corrosion.
- A change in the level of safety of the equipment as a result of repairs made, or of added or replaced components

## **One Post Equipment Maintenance.**

Special attention should be paid to the stability of products being of a one post design.

## **Corrective Maintenance.**

Corrective maintenance should include measures to correct defects, or to establish the necessary levels of safety of the playground equipment and surfaces. Such measures should include:

- Replacement of fastenings.
- Welding or welding repairs.
- Replacement of worn or defective parts.
- Replacement of defective structural components.

## **Equipment Alterations.**

Alterations to parts of any products that could affect the essential safety of the equipment should only be carried out after consultation with Play and Leisure.

## **Equipment Identification**

Information regarding the manufacturer, I.D. Number, year of manufacturer and the European Standard is displayed on an identification plaque.