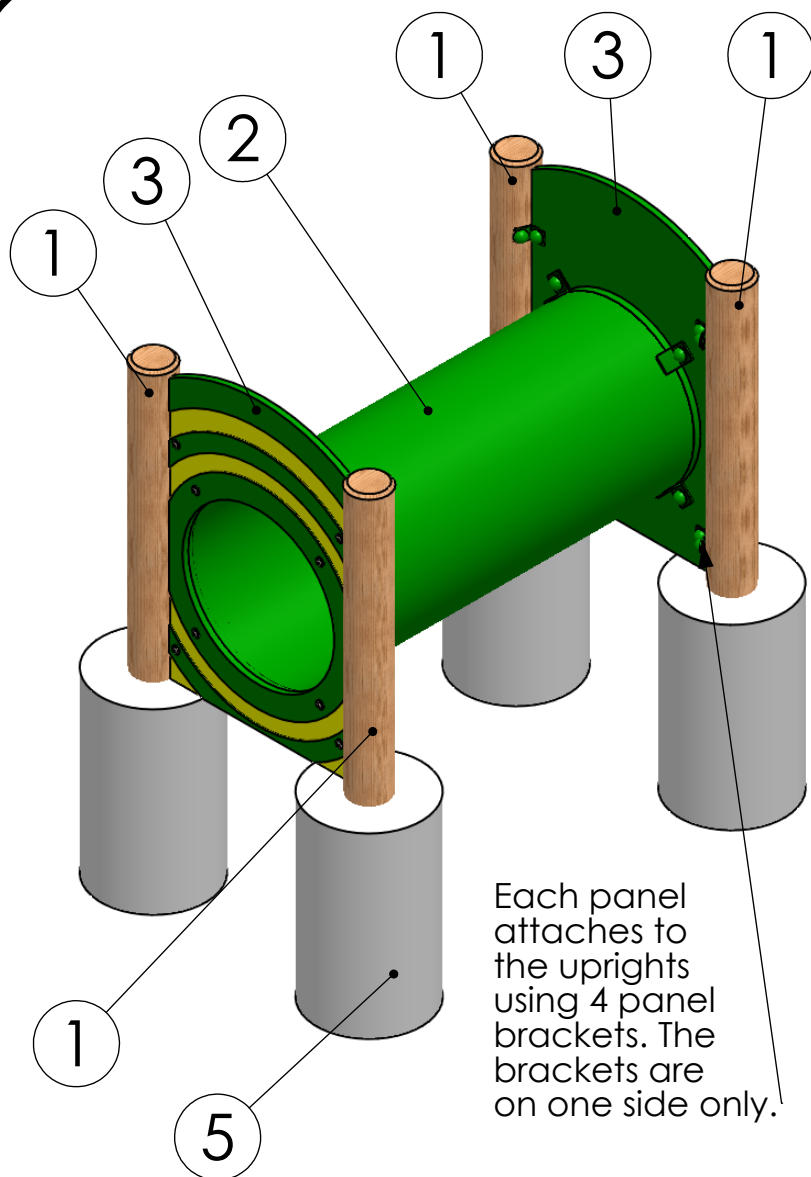
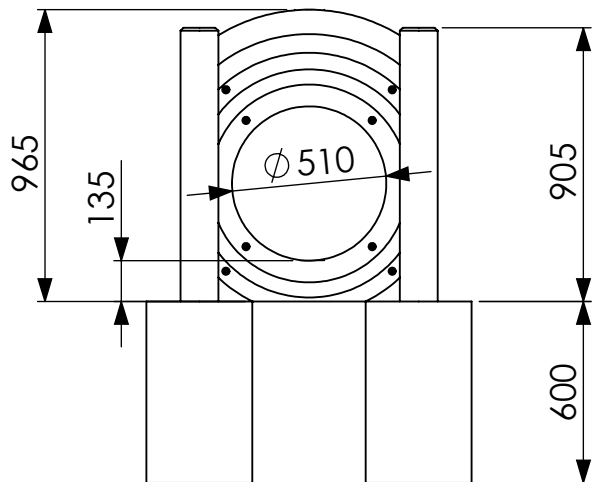


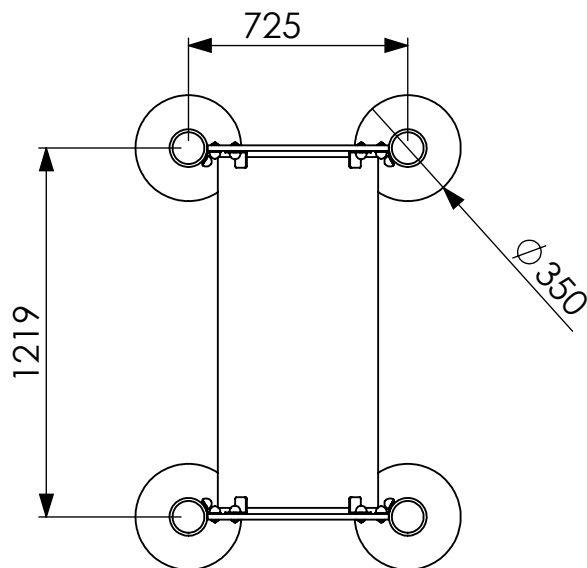
Free Standing Tunnel 1.2m



Each panel attaches to the uprights using 4 panel brackets. The brackets are on one side only.



Dig all groundworks 600mm deep



ITEM NO.	PART NUMBER	DESCRIPTION	QTY.
1	T1736	Timber 125mm dia. cut at 1505mm SC	4
2	B0186	1.2m Metal Tunnel with Lugs	1
3	B0352	Panel HDPE - Tunnel Panel - 600	2
4	B0435	Panel Bracket	8



ae evans

No safety surface required as critical fall height is less than 600mm. However we suggest allowing an appropriate free space around the item in compliance with BS EN1176.

Statement of Compliance: AE Evans Ltd. manufacturers of children's playground equipment follow the codes and practices outlined in the British and European Standards. By doing this, all equipment for play areas manufactured by AE Evans meets the requirements of BSEN 1176 (general safety and test methods). Spares can be supplied via equipment distributor.