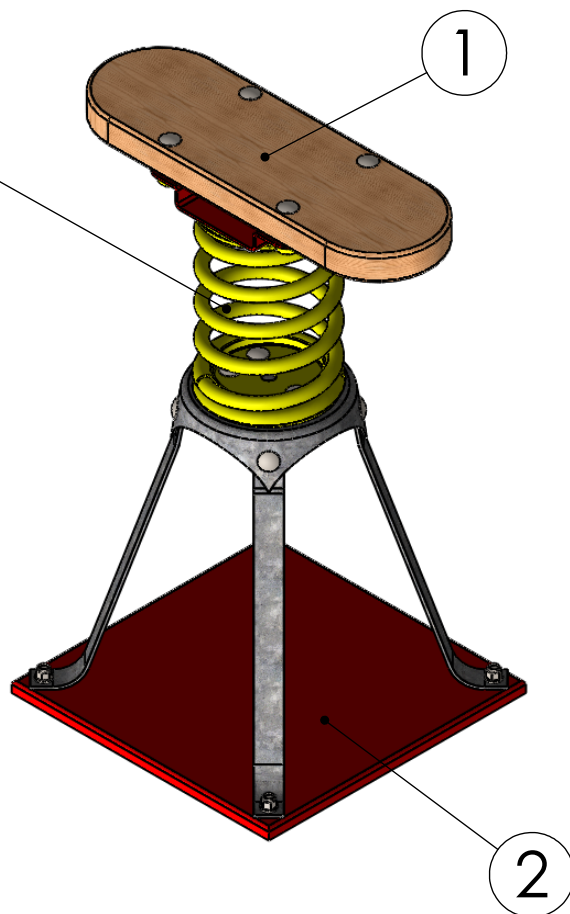
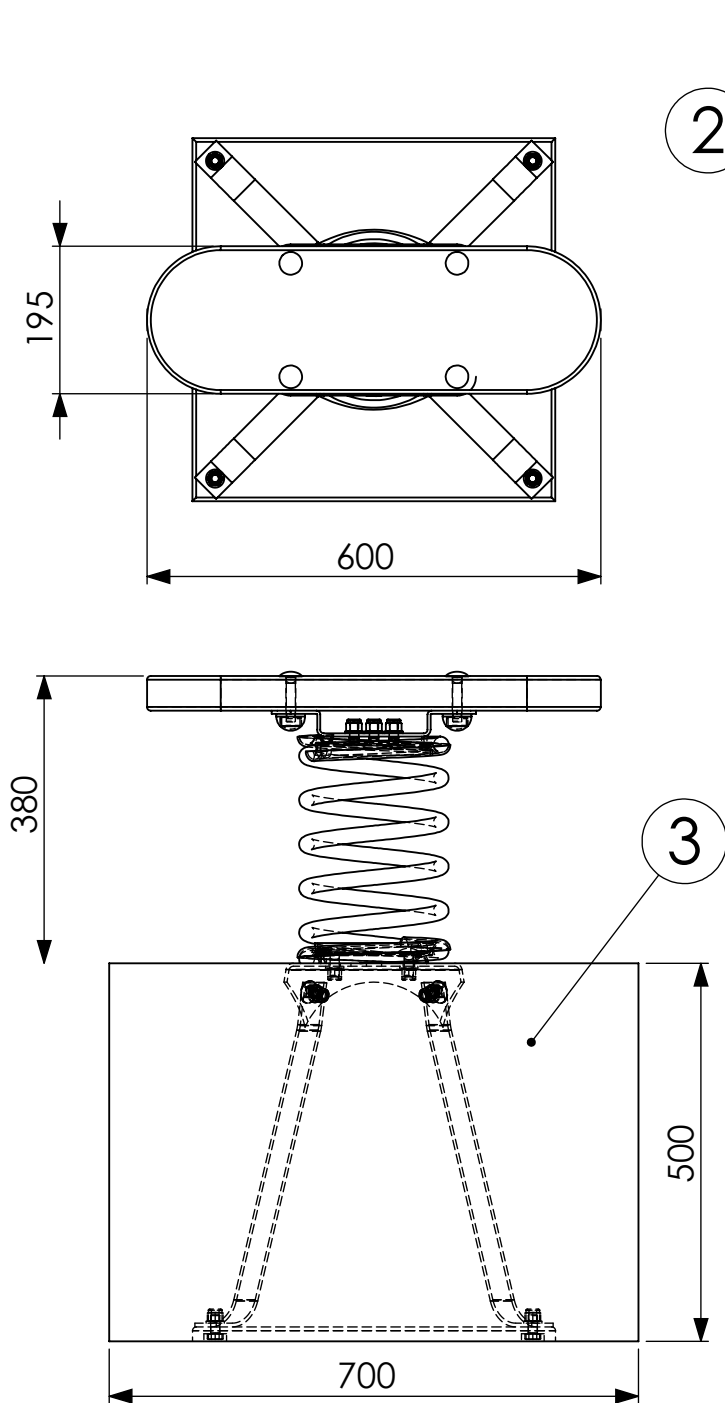


600mm Wobble Board



FFH: 380mm

No safety surface required as critical fall height is less than 600mm. However we suggest allowing an appropriate free space around the item in compliance with BS EN1176.

Dig groundworks 500mm deep

| ITEM NO. | PART NUMBER | DESCRIPTION | QTY. |
|----------|-------------|-------------------------------------|------|
| 1 | T2126 | Plank 600 x 195 x 46mm | 1 |
| 2 | B0490 | 300mm Spring Set with Ground Anchor | 1 |

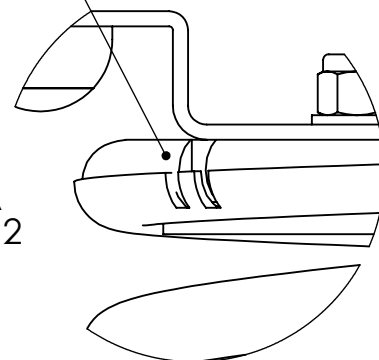


600mm Wobble Board

Quantities shown are per spring assembly.

| ITEM NO. | PART NUMBER | QTY. |
|----------|---------------------|------|
| 1 | Springer Base Plate | 1 |
| 2 | Ground Anchor Top | 1 |
| 3 | Bracing Leg | 4 |
| 4 | Mounting Plate | 1 |
| 5 | 300mm Spring | 1 |
| 6 | Perch Bracket | 2 |

Slide Perch Bracket inside the spring and line the lip upto the groove



DETAIL A
SCALE 1 : 2

Attach Mounting Plate to Timber using
4 x M10 x 70mm Coach Bolt
4 x M10 Washer
4 x M10 Nylock
4 x 2 Part Bolt Covers

The Mounting plate may be pre attached to the timber. In order to assemble the unit undo the fixing the bolts.

Mounting Plate

Perch Bracket

300mm Springy Spring

Perch Bracket

Ground Anchor Top

Attach Perch Bracket to Mounting Plate using
4 x M10 x 30mm Coach Bolt
4 x M10 Washer
4 x M10 Nylock

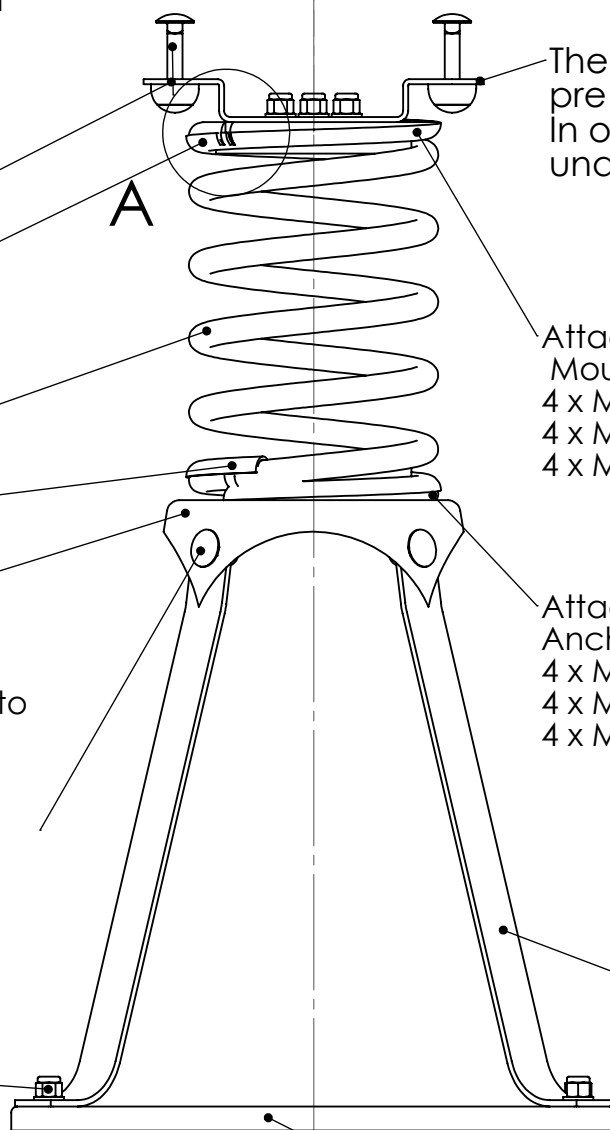
Attach Perch Bracket to Ground Anchor Top using
4 x M10 x 30mm Coach Bolt
4 x M10 Washer
4 x M10 Nylock

Attach Ground Anchor Top to Bracing Legs using
4 x M10 x 30mm Coach Bolt
4 x M10 Washer
4 x M10 Nylock

Bracing Leg

Attach Base Plate to Bracing Leg using
4 x M10 x 25mm Hex Bolt
4 x M10 Washer
4 x M10 Nylock

Springer Base Plate



How to fit the Perch Bracket into the Spring

Step 1



Step 2



Step 3



Step 4



Step 5

