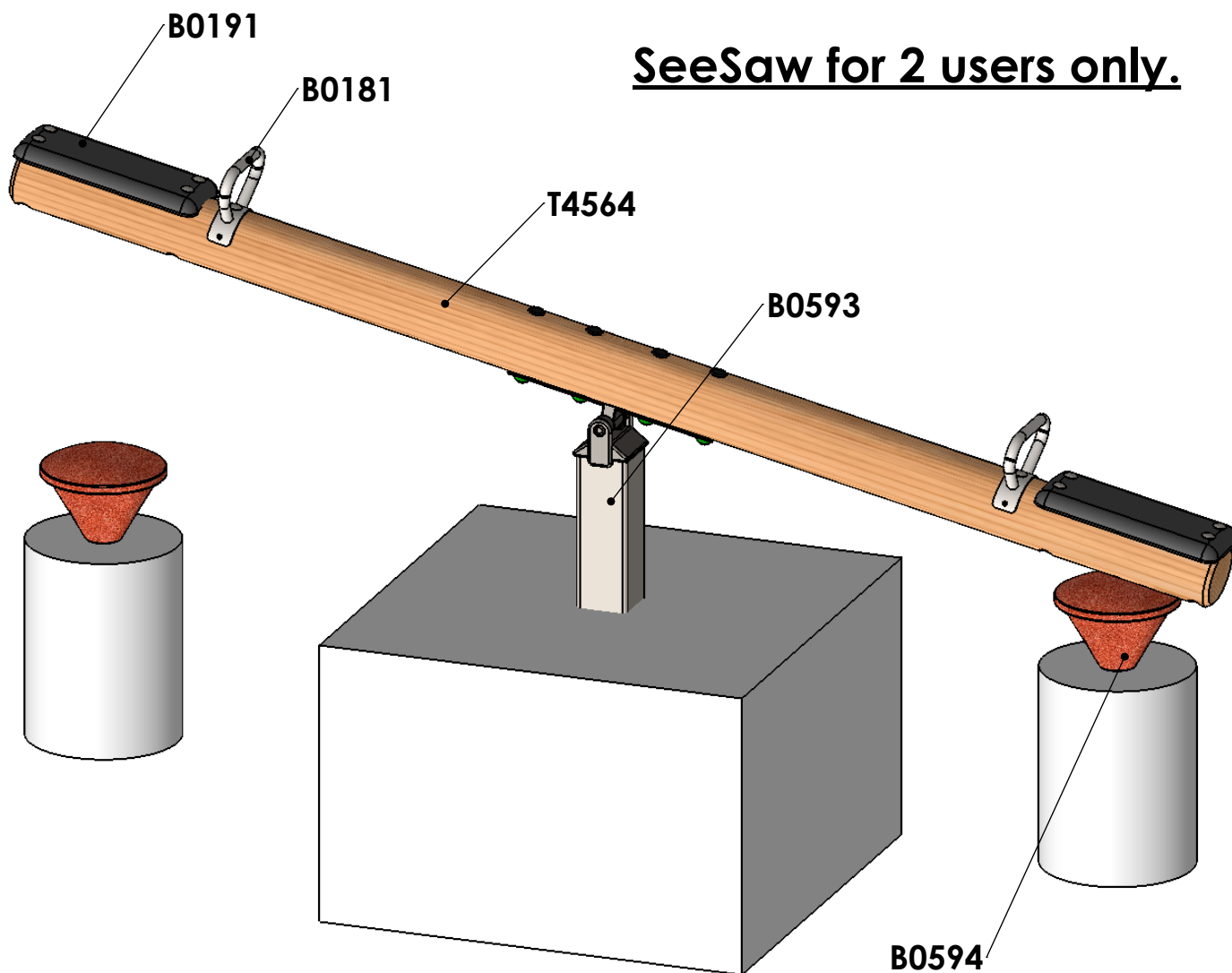


Timber SeeSaw

General Information - Page 1 of 3

Revision -
Saved Date 28 June 2019 12:34:47

SeeSaw for 2 users only.

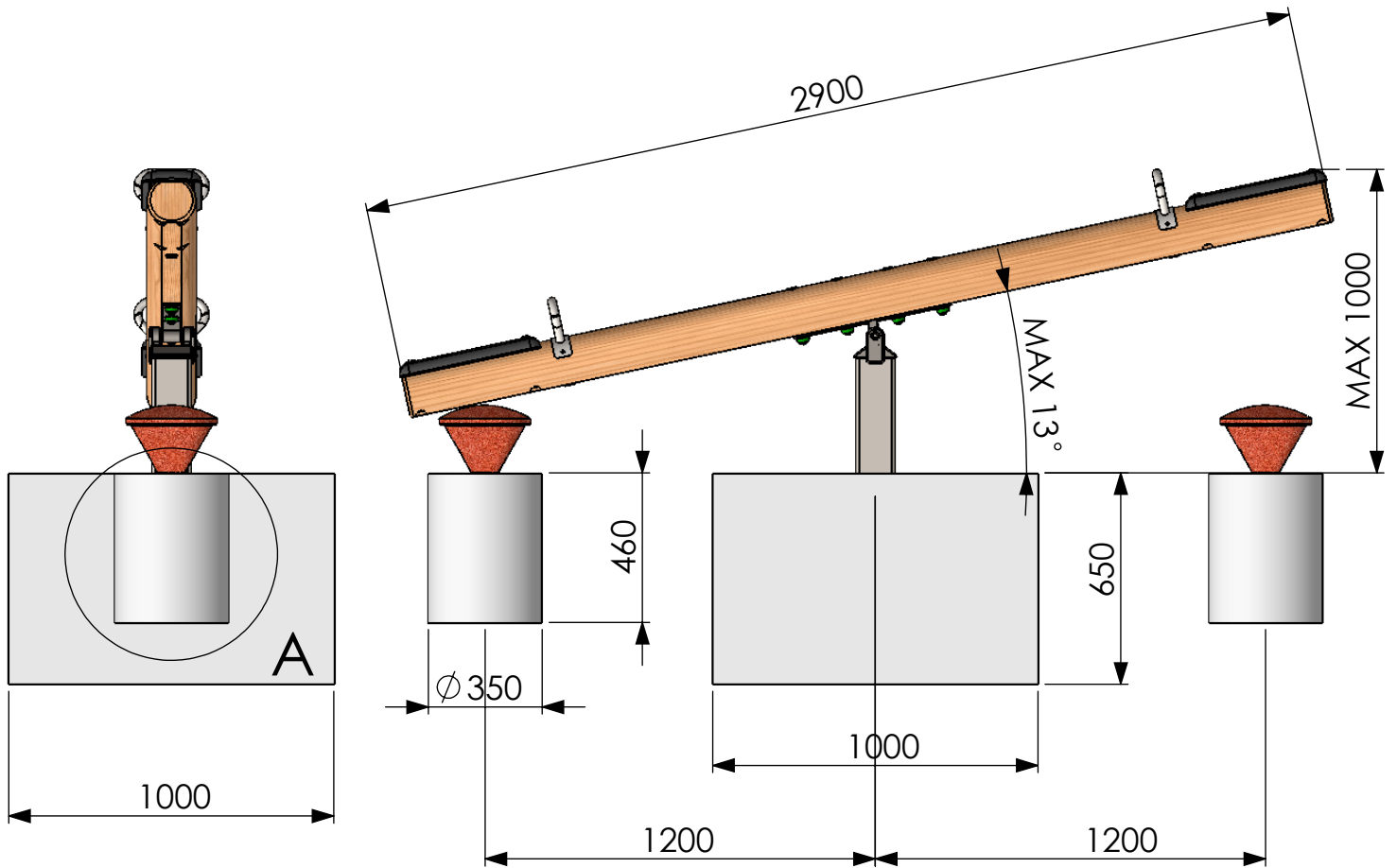


ITEM NO.	PART NUMBER	DESCRIPTION	QTY.
1	T4564	Timber 150mm dia. cut at 2900mm DC	1
2	B0181	Hand Grip - See Saw	2
3	B0191	Seat	2
4	B0593	SeeSaw Mechanism	1
5	B0594	SeeSaw Rubber Bumper	2

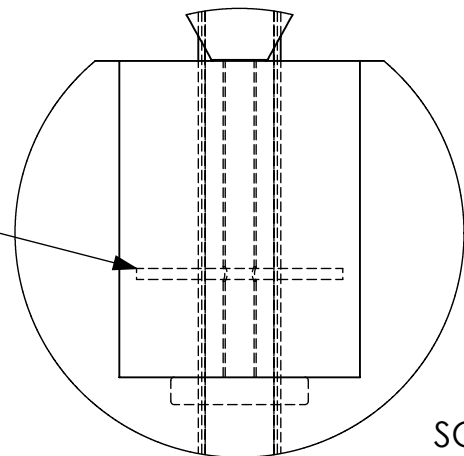


Statement of Compliance: AE Evans Ltd. manufacturers of children's playground equipment follow the codes and practices outlined in the British and European Standards. By doing this, all equipment for play areas manufactured by AE Evans meets the requirements of BSEN 1176 (general safety and test methods). Spares can be supplied via equipment distributor

Timber SeeSaw



Insert metal bar
through bumper leg.



Concrete Volume = 0.65m³

Maximum weight load is 130kg which includes the timber beam.

Maximum angle must not exceed 13 degrees.



Timber SeeSaw

