

Material & Product Details

Steel sections are all mild steel to the relevant BS EN steel standards

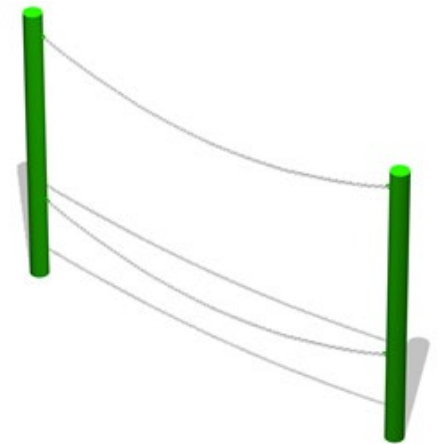
Chains are 6mm short link sherardised mild steel

Fixings are mostly BZP, high tensile steel, hex head bolts with washers and Nyloc nuts

Coatings

All steel equipment made by Play & Leisure is shotblasted to SA 2.5 before a 60-micron thick epoxy based zinc phosphate primer is applied and finally a 70 micron thick coating of polyester powder.

All Play & Leisure Ltd's equipment & surfacing complies to BS EN 1176 parts 1-10, BS EN 1177 and BS EN 15312. Equipment is guaranteed for 25 years against structural failure.



<u>Approx Packaged Dims - LxWxH (m)</u>	<u>Approx Weight (kg)</u>	<u>Approx Concrete Req'd (m³)</u>	<u>Approx Install Time</u>
2.2 x 0.5 x 0.5	50	0.2	2 men @ 1 hours

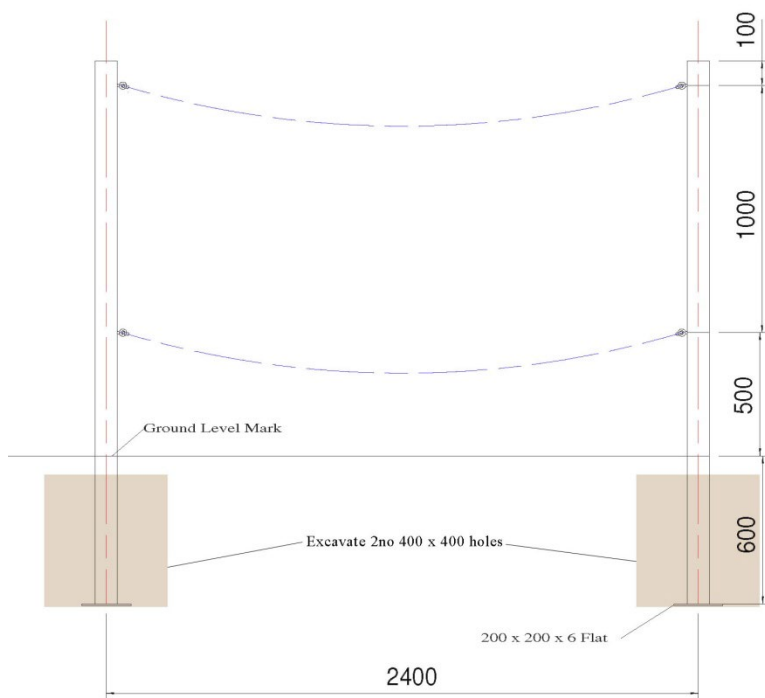
Installation Instructions

1. Excavate area for surfacing (not required if installed into adequate top soil & grass) ensuring 1500mm clear falling space from the equipment to the edge of the surfacing. Cluster Items (i.e. other items in the adventure trail) can be within the 1500mm falling space
2. Excavate 400mm x 400mm holes for ground fixing as per figure 1, place posts into excavated holes ensuring eyelets are in the correct location, ground level marks are level with the finished surface and posts are stable and level in all directions
3. Pour in approx 0.2m³ (across the 2 excavated holes) low slump concrete and vibrate down with vibrating poker, check levels again before allowing concrete to cure.

Do not leave unattended until satisfied the concrete has cured or the site is secure.

4. Attach chain to post, as shown in visual above, using 4no M6 quick links provided.
5. Ensure all fastenings are tightened and kit is fully operational.

Foundation Detail (fig. 1) - Side Elevation



Component List

Ref	Part Description	Part no	Qty.
A	Posts		2
B	Chains		2
C	M6 Quick Links		4

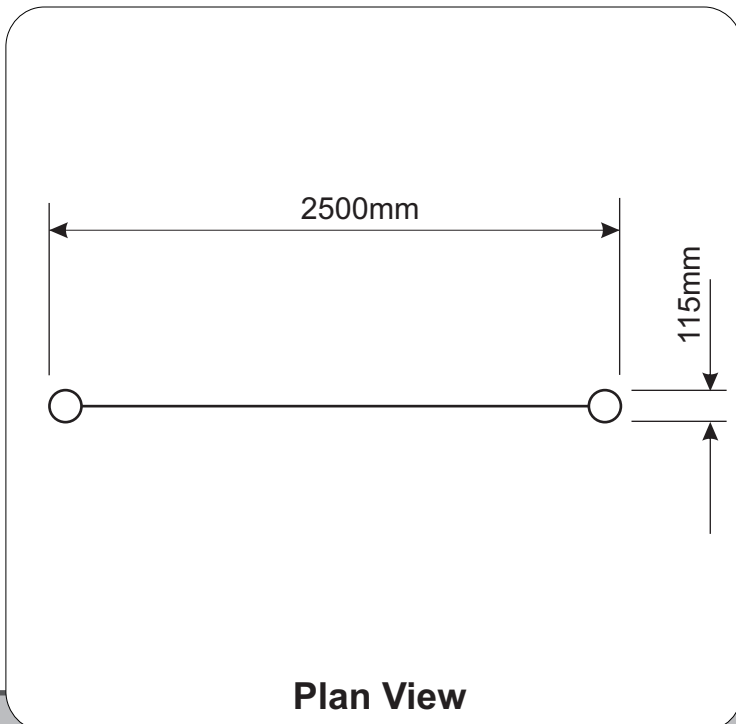
Critical Fall Height (m)
0.5
Surfacing Required (m ²)
Depends on surfacing type & trail configuration (1500mm falling space)




 All Play & Leisure's product range is fully compliant with **BS EN 1176:2008**

Technical AT-A-GLANCE	
Product Code	TT01
Equipment Size	2500L x 115W x 1600H
Minimum Space	4500 x 2115
Free Height of Fall	500

Side Elevation



Maintenance Schedule

Maintenance & Inspection

All Play & Leisure's products should be inspected and maintained in accordance with the recommendations as detailed in BS EN 1176-7:2008

If any part of the equipment is found to be unsafe during an inspection and cannot be immediately rectified the equipment should be protected against further use.

Routine Visual Inspection.

Routine visual inspections are to be conducted to identify obvious hazards resulting from vandalism, use or weather conditions. e.g. Hazards such as broken parts or broken bottles.

Operational Inspection.

To reduce accidents the operator should ensure an appropriate routine maintenance schedule is established, implemented and maintained. Inspection shall be carried out on a monthly basis, although consideration should be taken regarding local conditions and usage.

During a operational inspection the following should be included:

- Tightening of fastenings.
- Re-painting and re-treatment of surfaces.
- Maintenance of any impact attenuating surfaces.
- Lubrication of bearings.
- Marking of equipment to signify loose fill finished surface levels.
- Cleaning.
- Removal of broken glass and other debris or contaminants.
- Restoring loose fills to the correct level.
- Maintenance of free space areas.

Annual Main Inspection (NOT EXCEEDING 12 MONTHS)

Inspection intended to establish the overall level of safety of equipment, foundation and playing surfaces.

- Effects of weather.
- Rotting or corrosion.
- A change in the level of safety of the equipment as a result of repairs made, or of added or replaced components

One Post Equipment Maintenance.

Special attention should be paid to the stability of products being of a one post design.

Corrective Maintenance.

Corrective maintenance should include measures to correct defects, or to establish the necessary levels of safety of the playground equipment and surfaces. Such measures should include:

- Replacement of fastenings.
- Welding or welding repairs.
- Replacement of worn or defective parts.
- Replacement of defective structural components.

Equipment Alterations.

Alterations to parts of any products that could affect the essential safety of the equipment should only be carried out after consultation with Play and Leisure.

Equipment Identification

Information regarding the manufacturer, I.D. Number, year of manufacturer and the European Standard is displayed on an identification plaque.