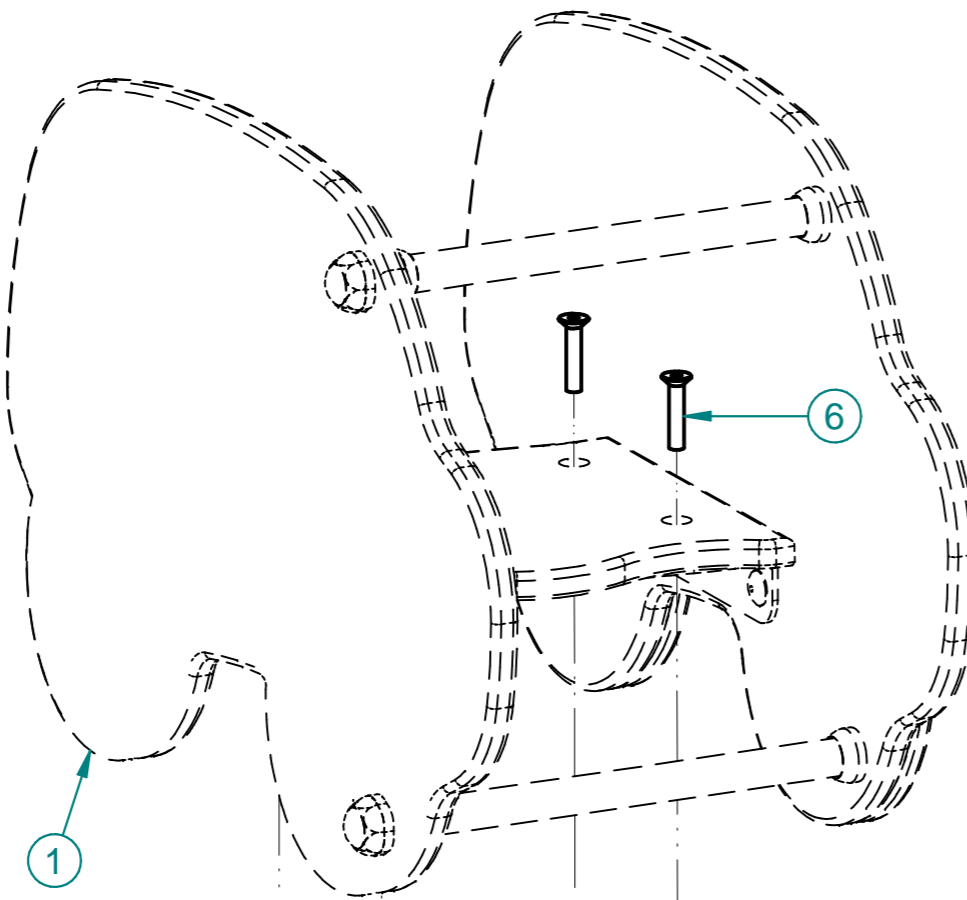


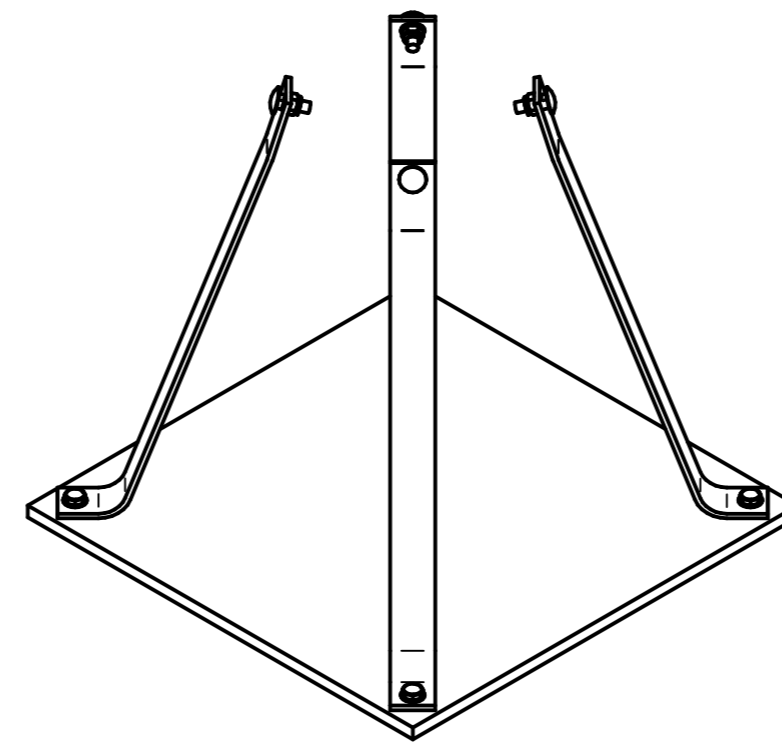
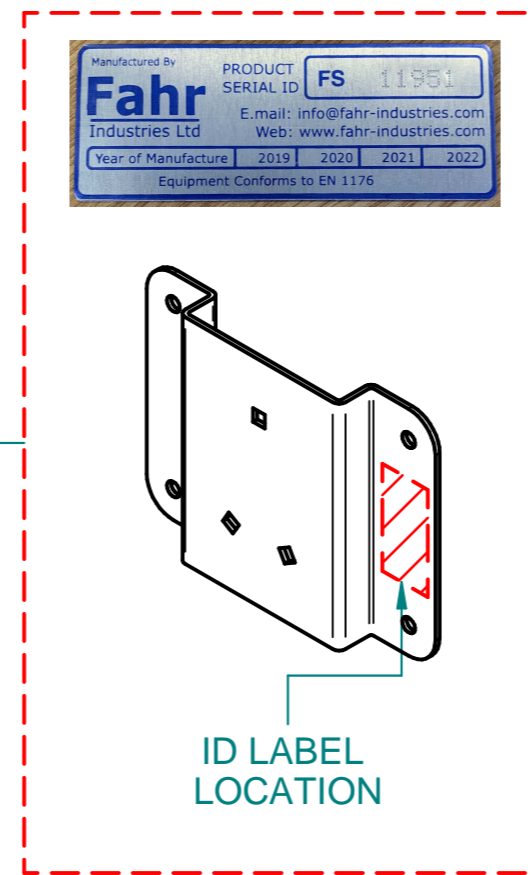
# Sit-In Spring Rockers - Installation Instructions

Please note that although graphical representation may differ from actual spring rocker, this instruction is common to all Fahr Sit-In spring rockers, please see below for individual codes.

Sit-In Spring Rocker Range	
Code	Description
FS2002	Sit-In Dumper
FS2003	Sit-In Mini Van
FS2004	Sit-In Butterfly
FS2005	Sit-In Whale
FS2006	Sit-In Cow (Moo)
FS2007	Sit-In Sheep (Baa)
FS2008	Sit-In Pig (Oink)
FS2009	Sit-In Horse (Neigh)
FS2010	Sit-In Goat (Billy)
FS2011	Sit-In Tractor
FS2012	Sit-In Aeroplane
FS2013	Sit-In Car
FS2014	Sit-In Bumble Bee
FS2015	Sit-In Caterpillar
FS2016	Sit-In Ladybug
FS2017	Sit-In Snail
FS2018	Sit-In Triceratops
FS2019	Sit-In Stegosaurus
FS2020	Sit-In Ellie Elephant
FS2021	Sit-In Craig Crocodile
FS2022	Sit-In Tim Tiger
FS2023	Sit-In Larry Lion
FS2024	Sit-In Zoe Zebra
FS2025	Sit-In American Football Spring Rocker
FS2026	Sit-In Baseball Spring Rocker
FS2027	Sit-In Basketball Spring Rocker
FS2028	Sit-In Soccer Spring Rocker



Offer pre-assembled spring rocker body to pre-assembled 400mm spring subassembly and securely fix in place using supplied fixings as detailed above. Insert bolt caps once bolts are fully tightened to finish the assembly



Ground Anchor Kit supplied as loose components with fixing pack. See next page for details.

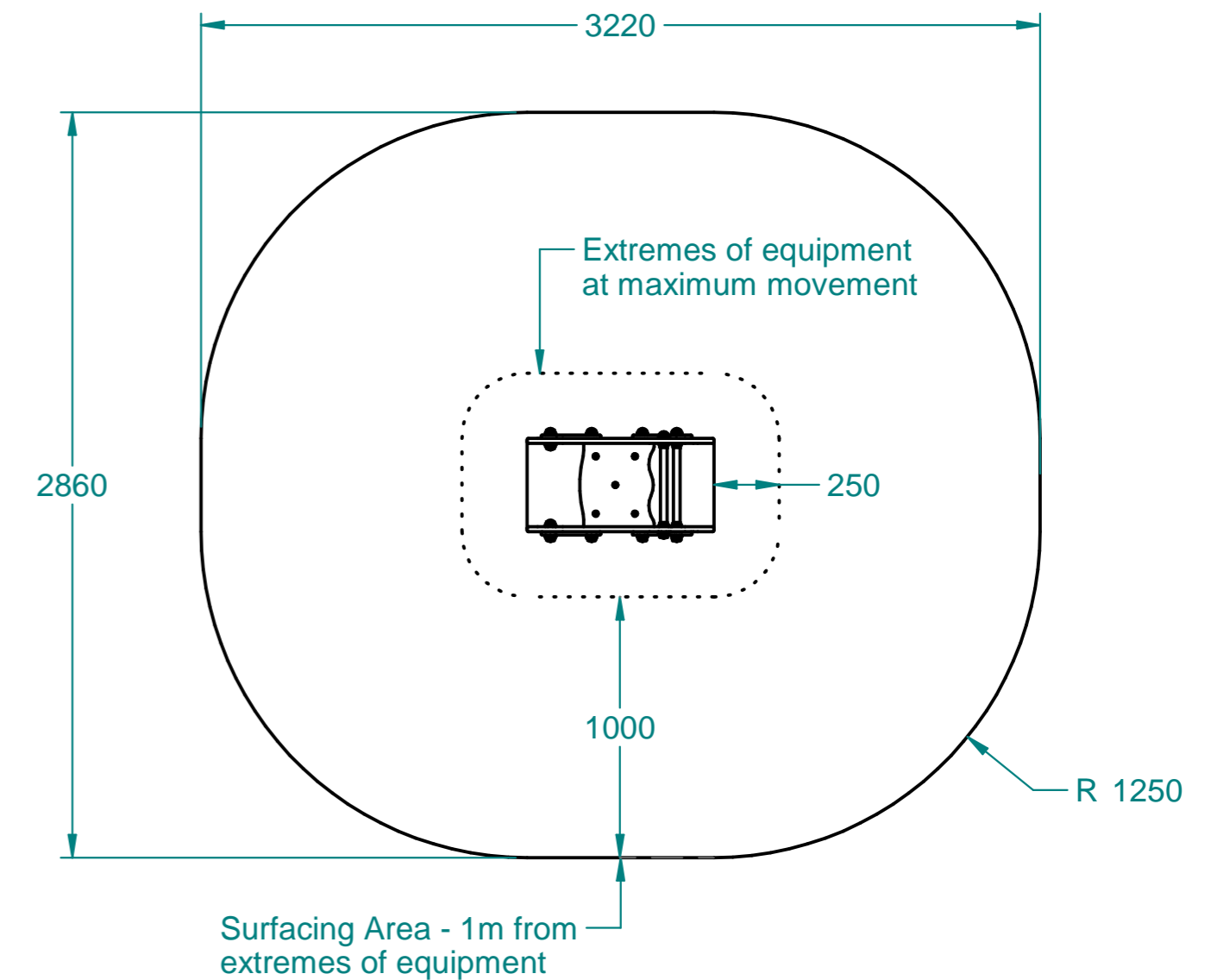
**BS EN 1176:2017**

3.3 - Single Point Rocker Type 2A

4.10 - Type 2 rocking equipment impact area should have a Critical Fall Height of at least 600mm

5.5 - Type 2 are exempt from forced movement requirements

**Surfacing Area: 8 sqm**  
**Critical Fall Height: Min 0.6m**



## Parts List

Item	Code	Description	Qty
1		<b>Sit-In Springer Pre-assembled Body</b>	<b>1</b>
2	<b>FSA0057-A</b>	<b>400mm Spring, Foundation &amp; Lower Sit-In Bracket</b>	<b>1</b>
3	FSU0009-A	M10 Nylock Nut - ZP	4
4	FSU0031-A	M10 Washer - SS	4
5	FSU0100-A	M10 Two Piece Security Cap - Flower	4
6	FSU0198-A	M10 x 40mm CSK Bolt - SS	4



Approx. Unit Weight: 37kg

Top Assembly: 20kg  
Spring Assembly: 14kg  
Ground Anchor Kit: 3kg

Modification	Date	Approved
New drawing	22/09/20	AW
New springers added	04/07/23	AD

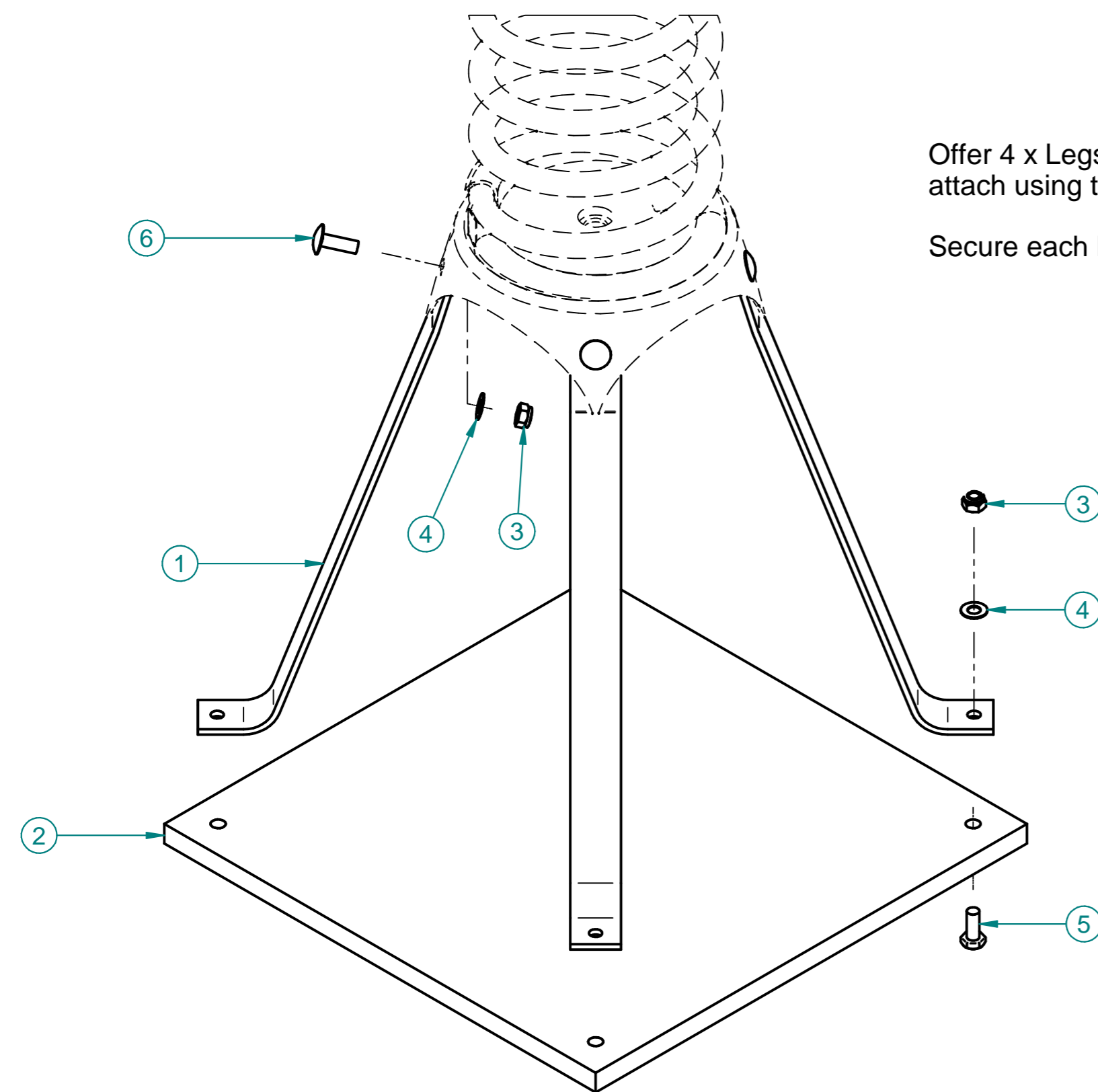
Spitfire Road, Old Sarum, Salisbury  
Wiltshire, SP4 6GB, UK  
Tel: +44 (0)1722 349 793  
www.fahr-industries.com

This document, including the copyright therein, is the property of Fahr Industries Ltd and may not be utilised for any purpose or reproduced, or transmitted to any third party without prior written consent.

⊕	All Dimensions in mm	1 of 3	Not To Scale
DrG By	Andrew Whittles	Date	22/01/2020

# Sit-In Spring Rockers - Installation Instructions

Ground Anchor Kit is supplied as loose components with fixing pack.



Offer 4 x Legs to inside face of crown and attach using the fixings shown in 4 places.

Secure each leg to Base Plate with fixings shown.

## Maintenance Inspection

FREQUENCY	WHAT TO DO
<b>VISUAL INSPECTION (EVERY MONTH)</b>	Identify any risks stemming from vandalism, intensive use or unusual weather
	Check for missing or broken parts
	Make sure that all protective covers are in place
<b>FUNCTIONALITY INSPECTION (EVERY MONTH)</b>	Inspect surfacing below and around equipment
	Check that the equipment, or the part concerned is operating correctly
	Check all fixings, joints and stability of the equipment and tighten or replace if necessary
	Check all parts for wear and tear and replace if necessary
<b>COMPREHENSIVE INSPECTION (EVERY 6 MONTHS)</b>	Thorough cleaning of equipment and any stainless steel parts with water and detergent
	All of the above plus:
	Inspect the anchoring system
	Inspect any moving, mechanical and electrical parts are operating correctly
	Check overall condition of any paintwork or galvanizing – repaint / touch up if necessary

This product should be inspected by a competent person who is familiar with BS EN 1176 to the above maintenance and inspection schedule.

- Increase inspection/ maintenance if the equipment is subject to heavy use

- Take care to complete installation fully and as instructed, and ensure all maintenance work is carried out in full prior to the recommissioning of the springer unit, to prevent any unnecessary hazards to children.

- Take particular notice of the foundation installation during the run-in period to ensure there is no excessive movement and there are no faults in construction or installation

- Replacement parts shall conform to manufacturer's original specifications.

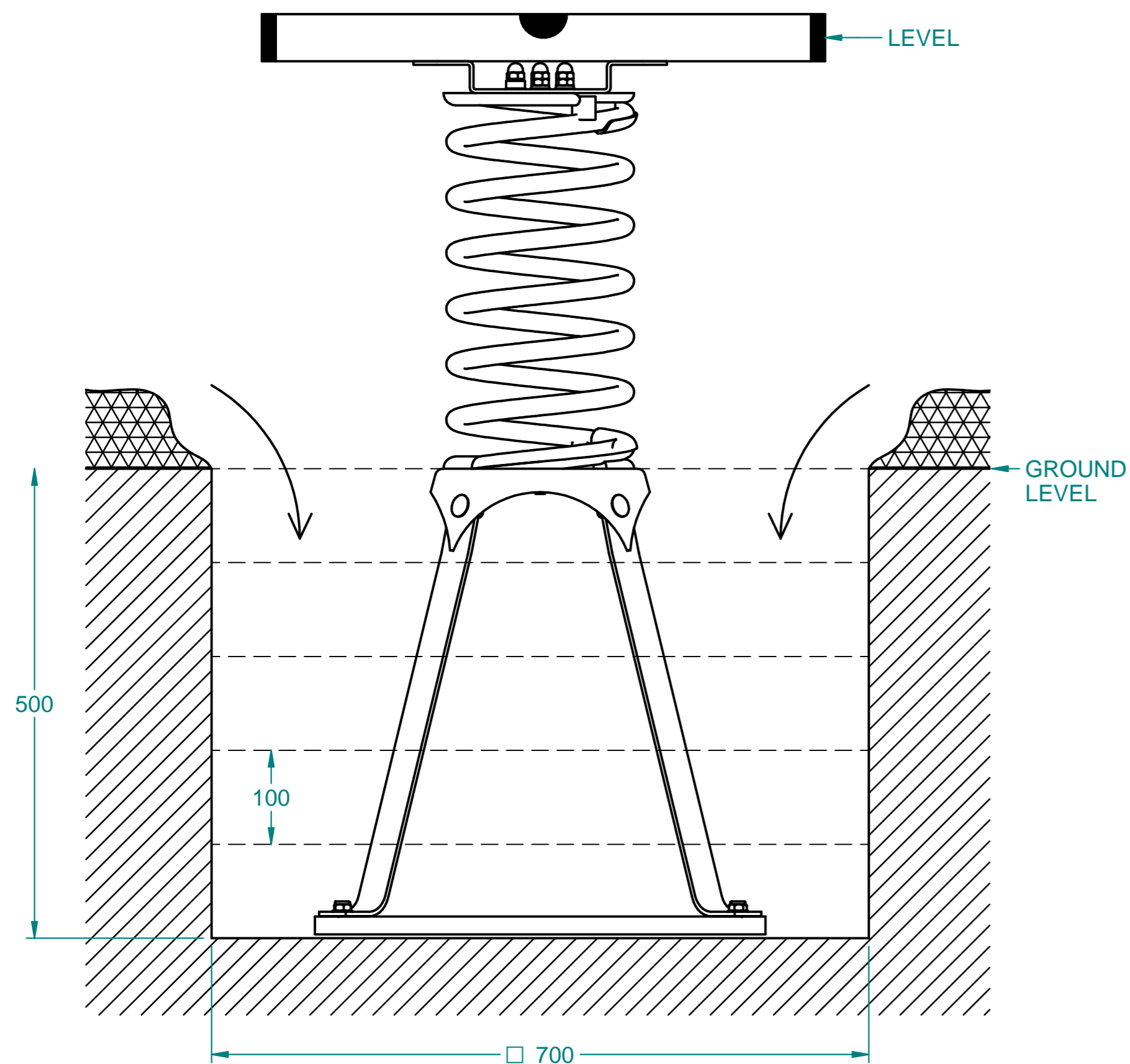
## Parts List

Item	Code	Description	Qty
1	FME0015-A	Spring Foundation Leg	4
2	FPL0060-A	Spring Foundation Base Plate	1
3	FSU0009-A	M10 Nylock Nut - ZP	8
4	FSU0014-A	M10 Washer - ZP	8
5	FSU0067-A	M10 x 25mm Hex Head Bolt - ZP	4
6	FSU0173-A	M10 x 30mm Coach Bolt - ZP	4

Modification	Date	Approved
New drawing	22/09/20	AW
New springers added	04/07/23	AD
Spitfire Road, Old Sarum, Salisbury Wiltshire, SP4 6GB, UK Tel: +44 (0)1722 349 793 www.fahr-industries.com		
This document, including the copyright therein, is the property of Fahr Industries Ltd and may not be utilised for any purpose or reproduced, or transmitted to any third party without prior written consent.		
All Dimensions in mm	2 of 3	Not To Scale
<b>Drg By</b> Andrew Whittles	<b>Date</b>	22/01/2020

# Sit-In Spring Rockers - Installation Instructions

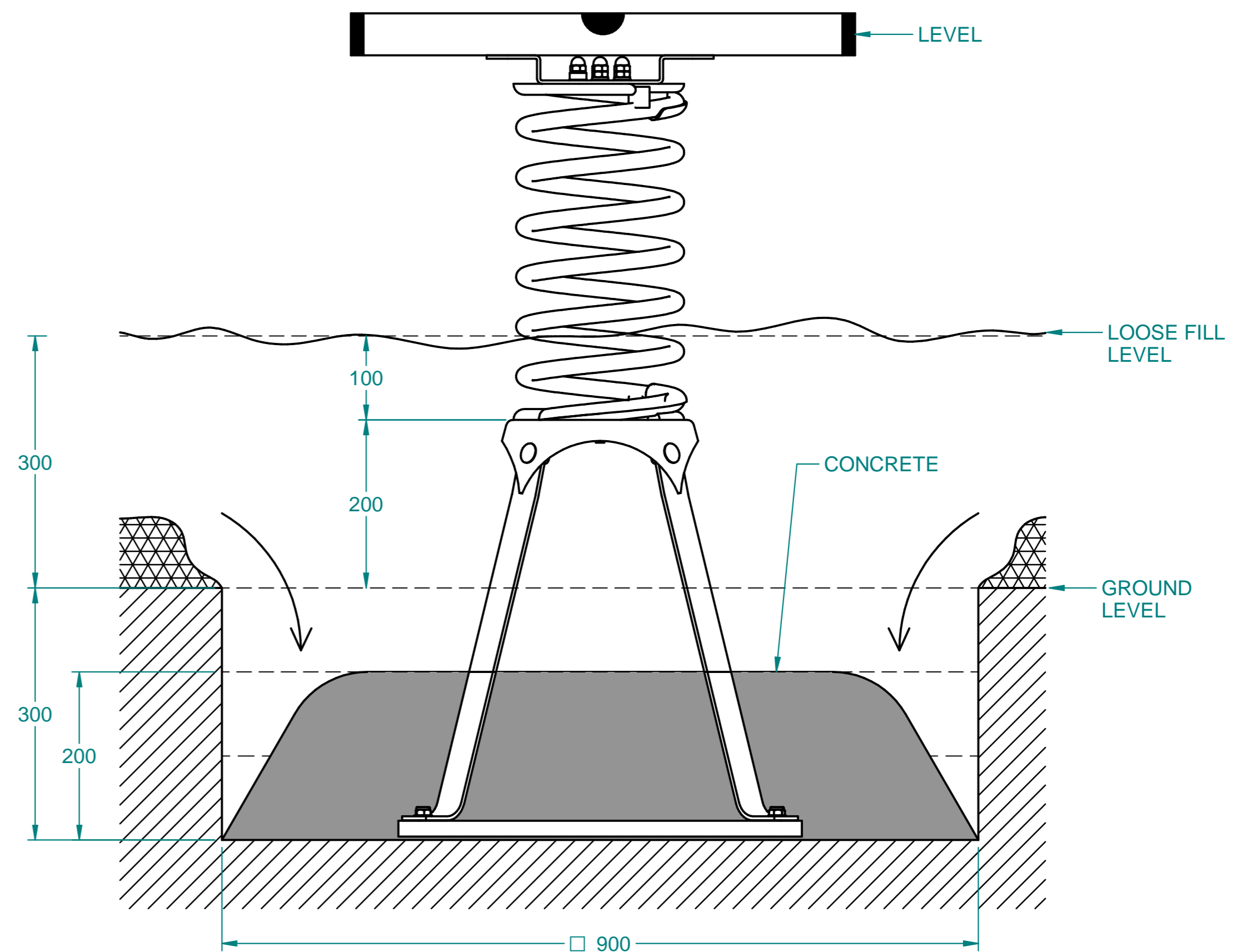
## Back Fill Installation



1. Excavate footings to dimensions above
2. Place assembled Springer in footing and orientate as required
3. Backfill with spoil from footing in 100mm layers, compact each layer

\*\* Do not concrete fill as this will void Guarantee\*\*

## Loose Fill Installation



1. Excavate footings to dimensions above
2. Place assembled Springer in footing and orientate as required
3. Pour a concrete slab with angled sides and min. 100mm radii edges
4. Wait for concrete to set
5. Backfill with spoil from footing in 100mm layers, compact each layer
6. Finish with loose fill material to 300mm above ground level

\*\*Do not concrete fill above 200mm as this this will void Guarantee\*\*

Modification	Date	Approved
New drawing	22/09/20	AW
New springers added	04/07/23	AD

Spitfire Road, Old Sarum, Salisbury  
Wiltshire, SP4 6GB, UK  
Tel: +44 (0)1722 349 793  
www.fahr-industries.com

**Fahr**

This document, including the copyright therein, is the property of Fahr Industries Ltd and may not be utilised for any purpose or reproduced, or transmitted to any third party without prior written consent.

⊕	All Dimensions in mm	3 of 3	Not To Scale
Drg By	Andrew Whittles	Date	22/01/2020