

## Orbitor - QU90

Steel sections are all mild steel to the relevant BS EN steel standards.

Fixings are mostly BZP, high tensile steel, hex head bolts with washers and Nyloc nuts.

### Coatings

All steel equipment made by Play & Leisure is shotblasted to SA 2.5 before a 60-micron thick epoxy based zinc phosphate primer is applied and finally a 70 micron thick coating of polyester powder.

All Play & Leisure Ltd's equipment & surfacing complies to BS EN 1176 parts 1-10, BS EN 1177 and BS EN 15312. Equipment is guaranteed for 25 years against structural failure.



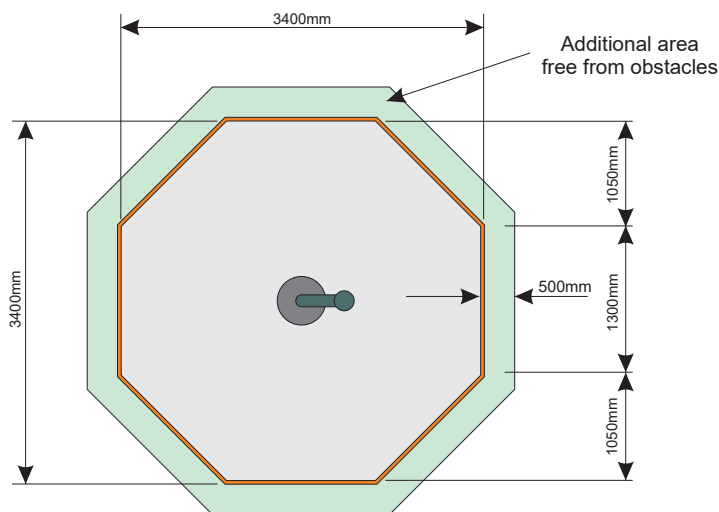
### INSTALLATION INSTRUCTION

1. Excavate area for the surfacing as shown in either Fig 1 or Fig 2(not required for grass mat)
2. Excavate hole and lower Orbitor into position and level in all directions. See Fig 3 or Fig 4 depending on surfacing required
3. Pour in 0.27m<sup>3</sup> of low slump concrete and vibrate down with vibrating poker.
4. Re-check levels.

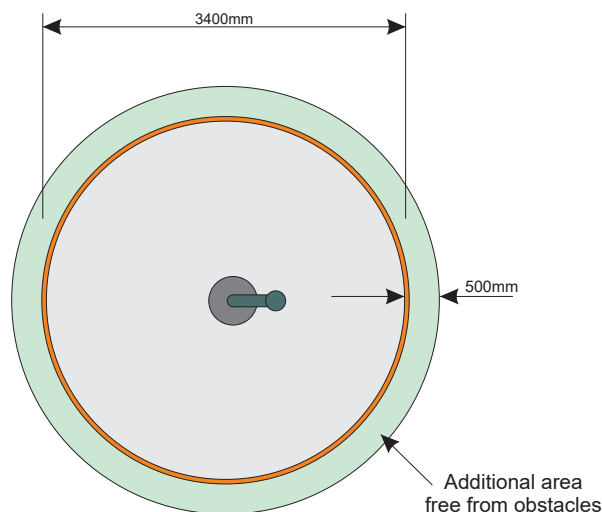
Do not leave unattended until satisfied the concrete has cured or the site is sufficiently secure.

On completion of the installation, a post-installation inspection should be carried out by a competent person to assess compliance with the relevant part(s) of BS EN 1176:2008.

### Surfacing Dimensions



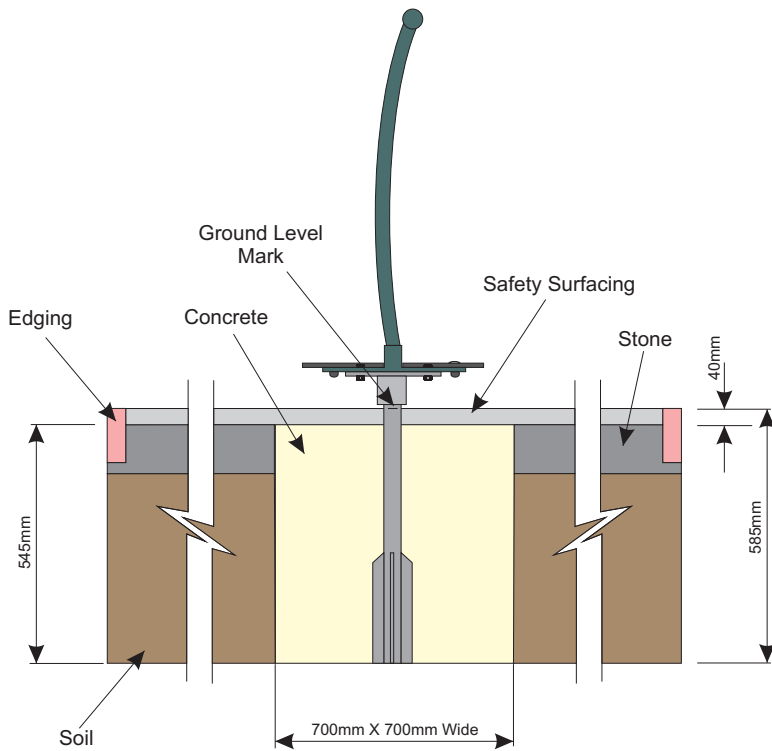
Hexagonal Base (fig 1)



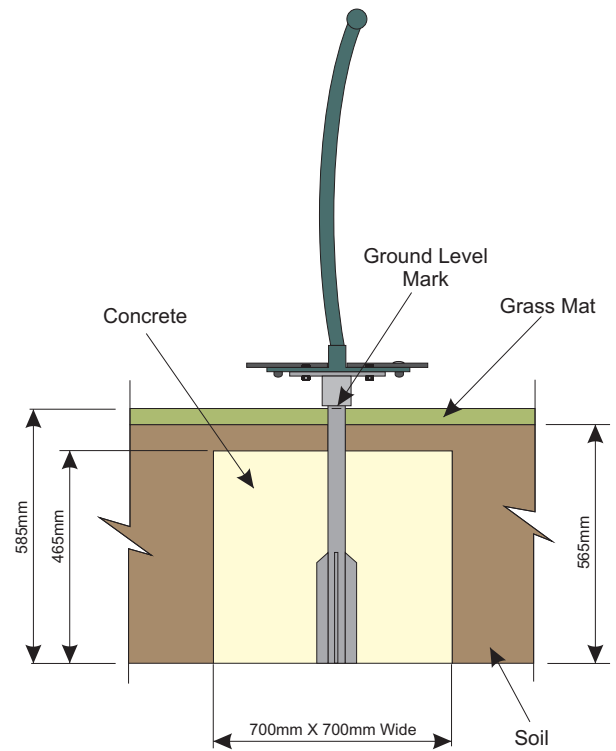
Circular Base (fig 2)

# Orbitor - QU90

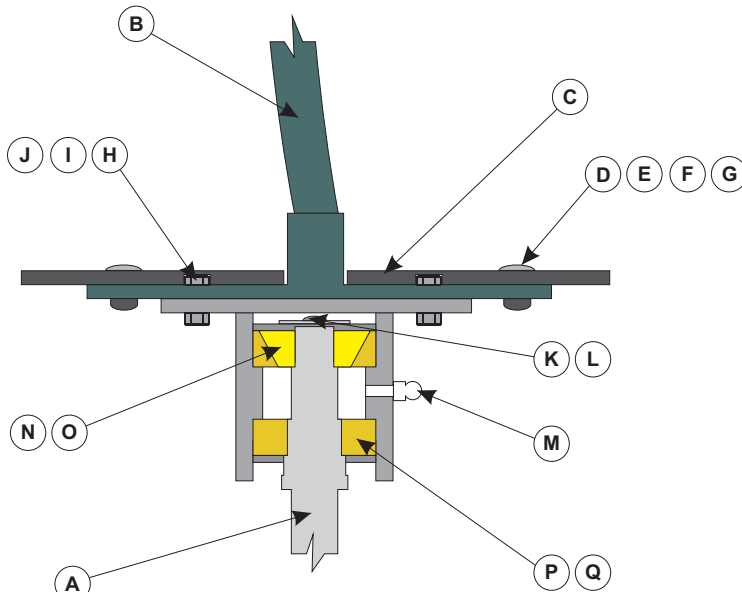
## Foundation Detail



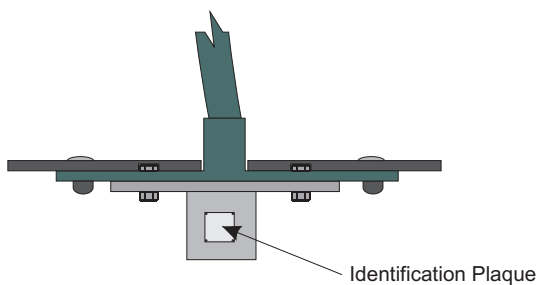
**Wetpour/Tile Surfacing(fig 3)**



**Grass Mat Surfacing(fig 4)**



**Bearing Assembly(fig 5)**



**Identification Plaque Location(fig 6)**

## Component List

Ref	Main Parts	Qty
A	Main Post	1
B	Orbitor Body	1
C	Platform	1
D	M10 x 45mm Cup Square Bolt	4
E	M10 Washer	4
F	M10 Nyloc Nut	4
G	Bolt Cap	4
H	M12 x 45mm Bolt	4
I	M12 Steel Washer	4
J	M12 Nyloc Nut	4
K	M10 x 40mm Bolt	1
L	Washer	1
M	Grease Nipple	1
N	Top Bearing	1
O	Top Dust Seal	1
P	Bottom Bearing	1
Q	Bottom Dust Seal	1

*Please note : Items are pre-assembled upon delivery.*

Play and Leisure hold a comprehensive range of spare parts in stock, which will normally be dispatched in 48 hours of request.

# Orbitor - QU90

## Maintenance & Inspection

The Orbitor should be inspected and maintained in accordance with the recommendations as detailed in BS EN 1176-7:2008

If any part of the equipment is found to be unsafe during an inspection and cannot be immediately rectified the equipment should be protected against further use.

## Routine Visual Inspection.

Routine visual inspections are to be conducted to identify obvious hazards resulting from vandalism, use or weather conditions. e.g. Hazards such as broken parts or broken bottles.

## Operational Inspection.

To reduce accidents the operator should ensure an appropriate routine maintenance schedule is established, implemented and maintained. Inspection shall be carried out on a monthly basis, although consideration should be taken regarding local conditions and usage.

During a operational inspection the following should be included:

- Tightening of fastenings.
- Re-painting and re-treatment of surfaces.
- Maintenance of any impact attenuating surfaces.
- Lubrication of bearings via grease nipple. See Fig 5. Care must be taken when greasing to avoid overfilling.
- Marking of equipment to signify loose fill finished surface levels.
- Cleaning.
- Removal of broken glass and other debris or contaminants.
- Restoring loose fills to the correct level.
- Maintenance of free space areas.

## Annual Main Inspection (NOT EXCEEDING 12 MONTHS)

Inspection intended to establish the overall level of safety of equipment, foundation and playing surfaces.

- Effects of weather.
- Rotting or corrosion.
- A change in the level of safety of the equipment as a result of repairs made, or of added or replaced components

## Corrective Maintenance.

Corrective maintenance should include measures to correct defects, or to-establish the necessary levels of safety of the playground equipment and surfaces. Such measures should include:

- Replacement of fastenings.
- Welding or welding repairs.
- Replacement of worn or defective parts.
- Replacement of defective structural components.

## Equipment Alterations.

Alterations to parts of the Orbitor that could affect the essential safety of the equipment should only be carried out after consultation with Play and Leisure.

## Equipment Identification

Information regarding the manufacturer, I.D. Number, year of manufacturer and the European Standard is displayed on a plaque at the base of the Orbitor(see fig 6)

Issue. No.	<input type="text" value="1"/>	Created By:	<input type="text" value="S. Adams"/>	Date:	<input type="text" value="19/09/11"/>	Signed:	<input type="text" value="Simon K. Adam"/>
Issue. No.	<input type="text"/>	Created By:	<input type="text"/>	Date:	<input type="text"/>	Signed:	<input type="text"/>
Issue. No.	<input type="text"/>	Created By:	<input type="text"/>	Date:	<input type="text"/>	Signed:	<input type="text"/>